



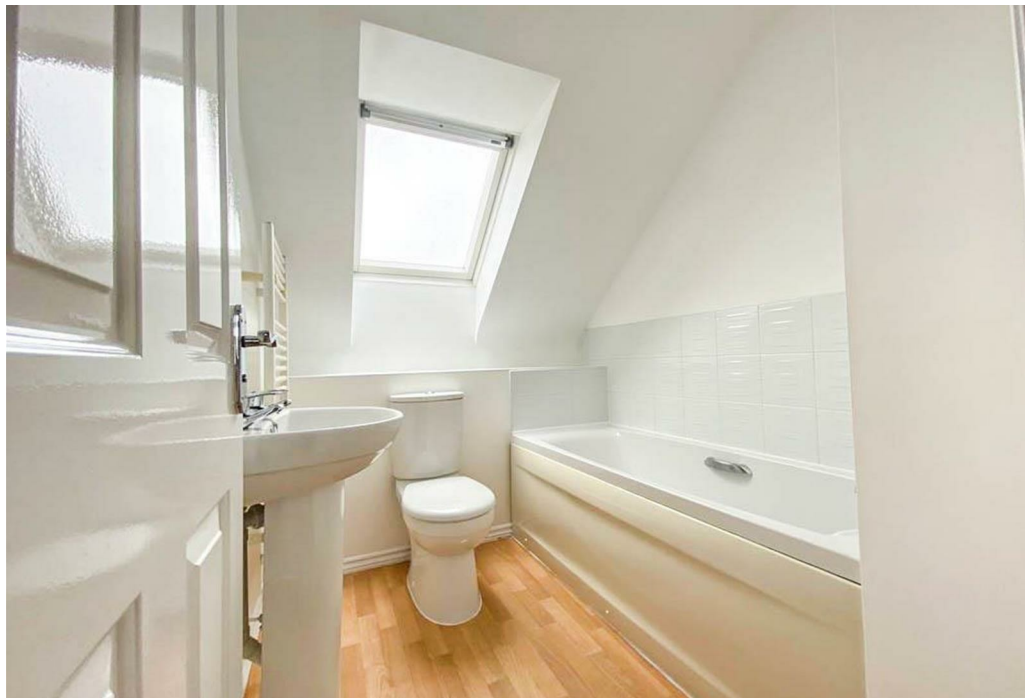
Oaklands Drive, Leicester, LE9 7HT



# Property Description

Loveitts are pleased to offer this modern three bedroom semi-detached property located just on the outskirts of Earl Shilton. This property benefits from gas central heating and UPVC double glazing. In brief comprises entrance hall, ground floor bedroom with en suite, first floor open plan kitchen/diner with lounge. To the second floor family bath and two further bedrooms one with en suite. Outside there is a driveway and garage to the front and garden to the rear. The Landlord has indicated that they are unable to accept pets, it is a non-smoking home and tenants will require an employer's reference or similar. EPC Rating TBC.









## Key Features

- Three Story House
- Three Bedrooms
- Two En-Suites
- Garage with Driveway
- Gas Central Heating
- Available Late September

**£1,195 PCM**