

Loveitts est. 1943

part of

**SHELDON
BOSLEY
KNIGHT** LAND AND
PROPERTY
PROFESSIONALS



Fife Street, Nuneaton, CV11 5PW

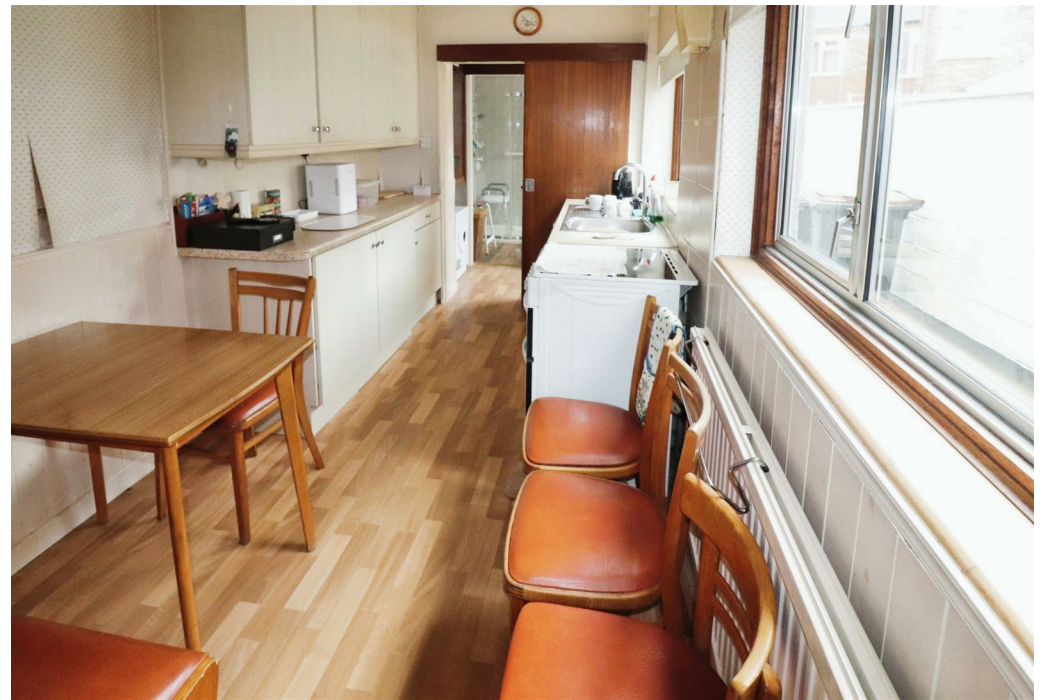
Property Description

This mid terrace house briefly accommodates lounge with a wall mounted gas fire, inner lobby with under stairs cupboard and leads to the dining room which has a Adams style fire surround with incorporated coal effect gas fire, double glazed patio doors to the rear elevation and access to the staircase leading to the first floor. Breakfast kitchen having a range of eye and base level units and a breakfast table area. The rear lobby has a double glazed side entrance door, wall mounted gas boiler and leads to the ground floor shower room which comprises a corner shower cubicle and vanity unit with incorporated hand wash basin and W.C.

The first floor landing provides access to the three good size bedrooms with the master bedroom having a cupboard housing a low level W.C and wall mounted hand wash basin. The property also benefits from gas central heating and double glazing. Outside the enclosed garden is easy to maintain being laid to paved patio with a timber framed open canopy/store.

The property would make an ideal first time buy or investment purchase and is also being offered for sale with no upward chain.





Key Features

- Mid Terrace House
- Lounge & Dining Room
- Breakfast Kitchen
- Ground Floor Shower Room
- Three Bedrooms
- Gas Central Heating
- Double Glazing
- Enclosed Rear Garden
- No Upward Chain

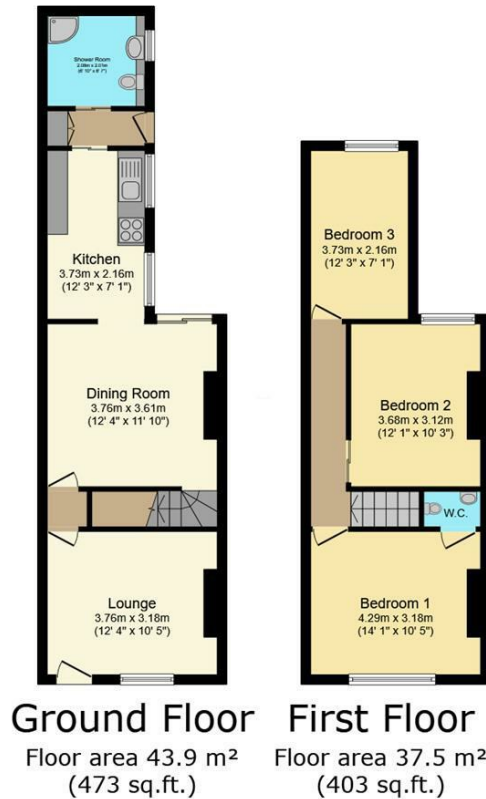
£155,000

EPC Rating - D

Tenure - Freehold

Council Tax Band - A

Local Authority -



TOTAL: 81.4 m² (876 sq.ft.)

This floor plan is for illustrative purposes only. It is not drawn to scale. Any measurements, floor areas (including any total floor area), openings and orientations are approximate. No details are guaranteed, they cannot be relied upon for any purpose and do not form any part of any agreement. No liability is taken for any error, omission or misstatement. A party must rely upon its own inspection(s). Powered by www.Propertybox.io

We routinely refer clients to both our recommended Legal Firm and a panel of Financial Services Providers. It is your decision whether you choose to deal with these companies. In making that decision, you should know that we receive a referral fee