

est. 1843  
**Loveitts**

part of

**SHELDON  
BOSLEY**  
KNIGHT

LAND AND  
PROPERTY  
PROFESSIONALS



Loveitts  
180<sup>TH</sup>  
ANNIVERSARY  
FOR SALE  
01476 7571

41

25

23

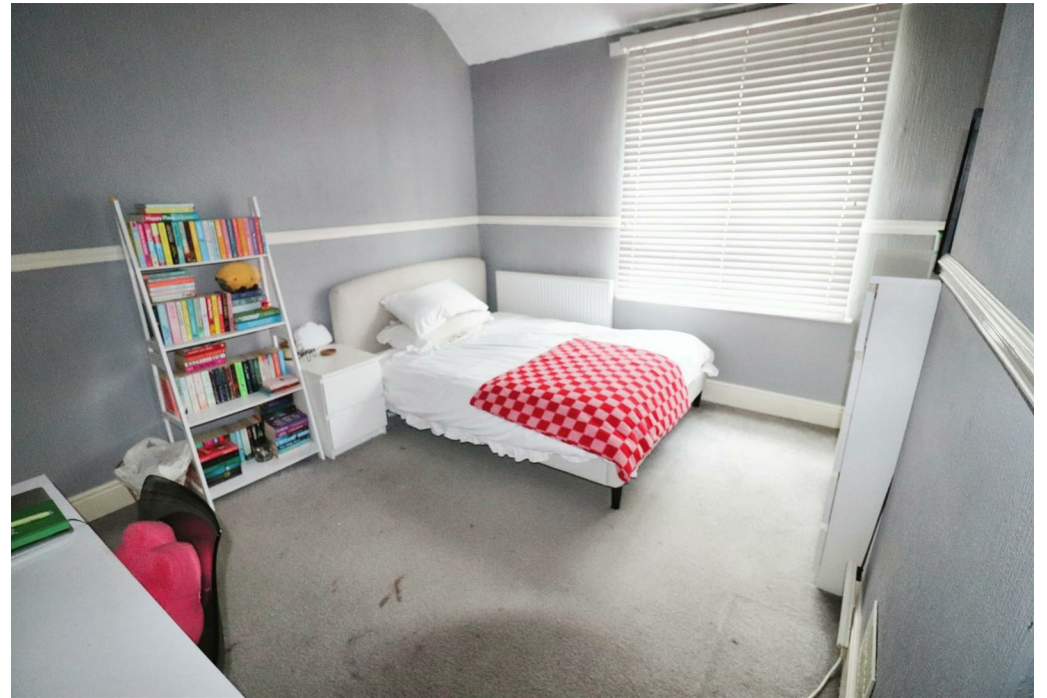
**Hill Street, Nuneaton, CV10 8JE**

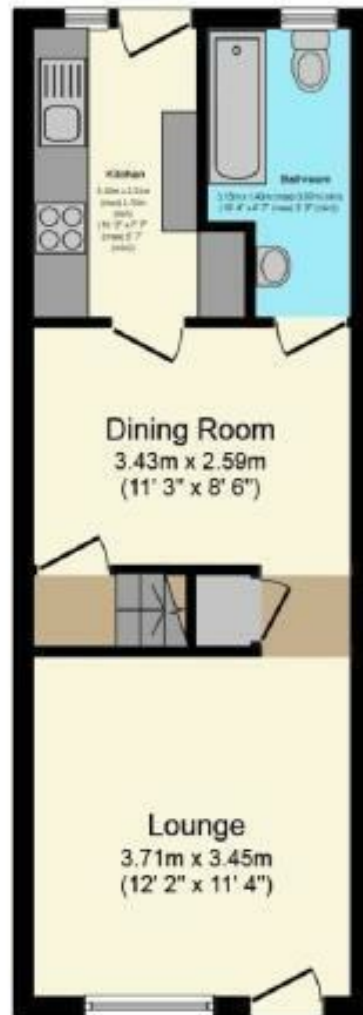
# Property Description

This mid terrace property briefly accommodates lounge having a wooden fire surround with incorporated fire and open archway leading to the dining room which has access to the staircase with storage cupboard beneath. Modern kitchen with a range of eye and base level units with integrated hob, oven and extractor. Ground floor bathroom with a modern white coloured suite which includes a panelled bath with shower unit above, pedestal hand wash basin and a low level W.C. First floor landing provides access to the two bedrooms.

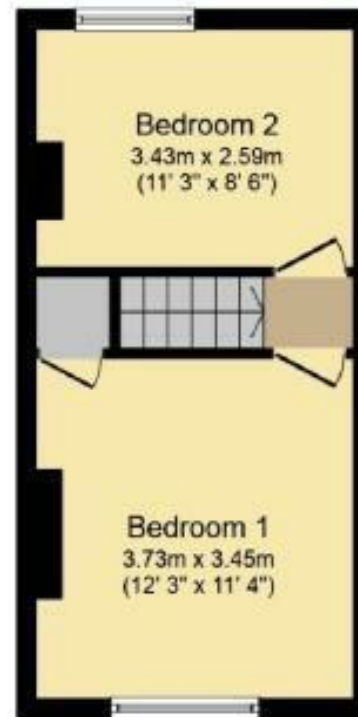
The property also benefits from gas central heating and PVCu double glazing. Outside the rear garden is laid to lawn with a paved patio area. The property would make an ideal first time buy or investment purchase and is also being offered for sale with no onward chain.







**Ground Floor**



**First Floor**

## Key Features

- Mid Terrace House
- Two Reception Rooms
- Modern Kitchen With Hob & Oven
- Modern Bathroom Suite
- Two Bedrooms
- Gas Central Heating
- Double Glazing
- Rear Garden and Patio Area
- Ideal First Time Buy Or Investment
- No Upward Chain

**£155,000**

EPC Rating -

Tenure - Freehold

Council Tax Band - A

Local Authority -