

est. 1943  
**Loveitts**

part of

**SHELDON  
BOSLEY  
KNIGHT**

LAND AND  
PROPERTY  
PROFESSIONALS



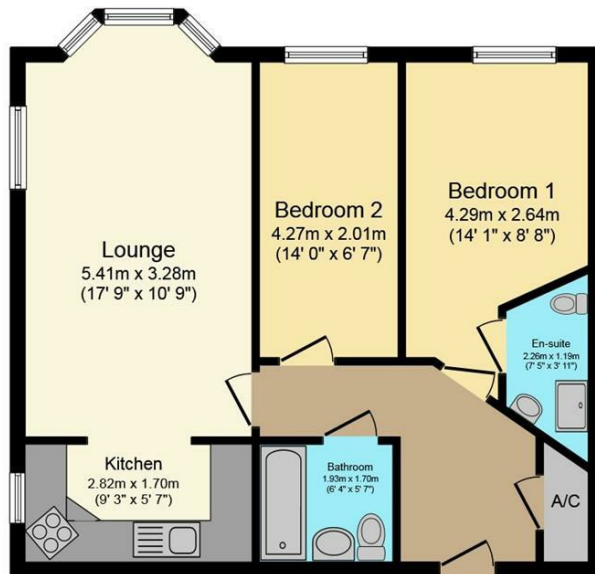
**St. Nicolas Park Drive, Nuneaton, CV11 6DY**

# Property Description

This purpose built apartment is situated on the highly sought after St Nicolas Park development having a communal entrance hall with elevator providing access to the two upper floors. The accommodation located on the second floor briefly comprises entrance hall, spacious lounge/dining room with bay window and open archway leading to the fitted kitchen with integrated appliances including hob, oven, fridge/freezer and a washing machine. Two good size bedrooms with en suite shower room off the master bedroom. There is also a further bathroom with a modern suite. The property benefits from electric under floor heating and PVCu double glazing. Outside there are enclosed communal gardens and secure allocated vehicle parking. Internal viewing is highly recommended and the apartment is being offered for sale with no upward chain.







### Floor Plan

Floor area 60.0 sq. m. (646 sq. ft.) approx

Total floor area 60.0 sq. m. (646 sq. ft.) approx

This Floor Plan is for illustration purposes only and may not be representative of the property. The position and size of doors, windows and other features are approximate. Unauthorized reproduction prohibited. © PropertyBOX

## Key Features

- Apartment
- Spacious Lounge/Dining Room
- Kitchen With Integrated Appliances
- Two Double Bedrooms
- En-Suite Shower Room
- Bathroom With Modern White Suite
- Electric Under floor Heating
- PVCu Double Glazing
- Secure Allocated Parking Space
- No Upward Chain

**£185,000**

EPC Rating - C

Tenure - Leasehold

Council Tax Band -

Local Authority -