

est. 1943
Loveitts

part of

**SHELDON
BOSLEY
KNIGHT**

LAND AND
PROPERTY
PROFESSIONALS



Haunchwood Road, Nuneaton, CV10 8DX

Property Description

This well presented ground floor purpose built apartment briefly comprises communal entrance hall which leads to the apartment located on the ground floor. Entrance hall, spacious lounge with wooden style flooring and PVCu double glazed window over looking the rear and panelled door leading to the kitchen having a range of beechwood style units with integrated gas hob and electric oven.

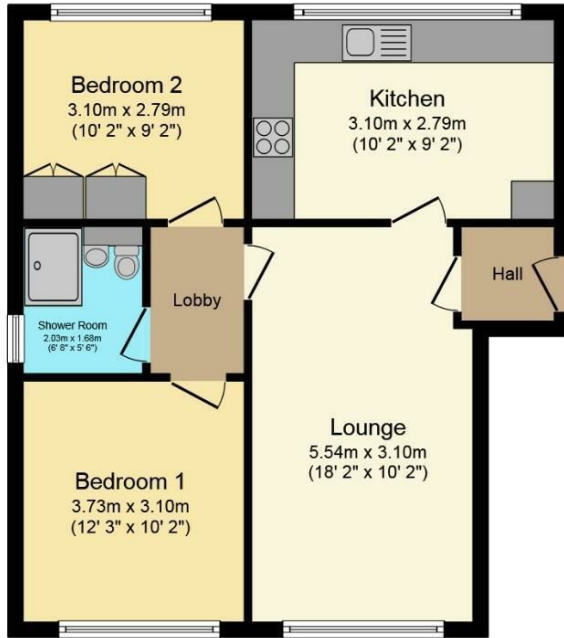
Inner lobby provides access to the two bedrooms with the second bedroom having a fitted wardrobe/storage cupboards which include the airing cupboard housing the hot water cylinder and tank. Modern shower room having a corner shower cubicle with electric Triton shower unit, pedestal hand wash basin and a low level W.C.

The property also benefits from gas central heating and PVCu double glazing. Outside there are communal gardens and communal car park for vehicles. The property also benefits from having a detached garage which is located to the rear of the apartment block.

Internal viewing is highly recommended and the property is also being offered for sale with no upward chain.







Floor Plan

Floor area 57.9 sq.m. (623 sq.ft.) approx

Total floor area 57.9 sq.m. (623 sq.ft.) approx

This Floor Plan is for illustration purposes only and may not be representative of the property. The position and size of doors, windows and other features are approximate. Unauthorized reproduction prohibited. © PropertyBOX

Key Features

- Ground Floor Apartment
- Spacious Lounge
- kitchen With Hob & Oven
- Two Bedrooms
- Shower Room
- Gas Central Heating
- PVCu Double Glazing
- Communal Gardens & Vehicle Car Parking
- Detached Garage
- No Upward Chain

£82,500

EPC Rating - C

Tenure - Leasehold

Council Tax Band - A

Local Authority -