

est. 1943  
**Loveitts**

part of

**SHELDON  
BOSLEY**  
KNIGHT

LAND AND  
PROPERTY  
PROFESSIONALS



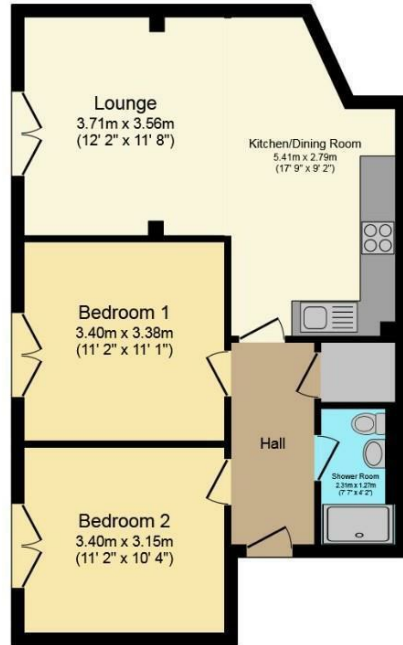
**Kingswood Road, Nuneaton, CV10 8QY**

# Property Description

\*\*\*NEW PRICE\*\*\* This purpose built first floor apartment AFFORDING NO UPWARD CHAIN offers spacious well presented accommodation which in brief comprises communal entrance accessed via intercom system, entrance hall with storage cupboard and provides access to the open plan lounge/dining room and kitchen. The lounge area has PVCu double glazed French doors and a Juliet style balcony and the kitchen has a range of eye and base modern units with integrated hob and oven. Two good size bedrooms both having PVCu double glazed French doors and Juliet style balcony. Shower room with a modern white coloured suite including a shower cubicle with shower unit, wall mounted hand wash basin and a low level W.C. The property also benefits from gas fired central heating and PVCu double glazing. Outside there is a communal garden and allocated vehicle parking space. Internal viewing is highly recommended to fully appreciate the accommodation.







### Floor Plan

Floor area 59.5 sq.m. (641 sq.ft.) approx

Total floor area 59.5 sq.m. (641 sq.ft.) approx

This Floor Plan is for illustration purposes only and may not be representative of the property. The position and size of doors, windows and other features are approximate. Unauthorized reproduction prohibited. © PropertyBOX

## Key Features

- First Floor Apartment
- Open Plan Lounge
- Dining Area
- Modern Kitchen
- Integrated Hob & Oven
- Two Double Bedrooms
- Modern Shower Room
- GFCH & PVCu Double Glazing
- Allocated Parking Space
- No Upward Chain

**Reduced To  
£139,950**

EPC Rating - B

Tenure - Leasehold

Council Tax Band - A

Local Authority -