

Loveitts est. 1943

part of

SHELDON
BOSLEY
KNIGHT

LAND AND
PROPERTY
PROFESSIONALS



Gleave Road, Leamington Spa, CV31 2JT

Property Description

*****NO ONWARD CHAIN***** Located in the popular area of Whitnash is this beautifully presented, modern four bedroom detached house. This property has been improved by the current owner.

The ground floor offers an entrance hallway with a utility room, cloakroom, a study, great sized living room and separate kitchen / diner. The kitchen benefits from integrated appliances such as a double oven unit, gas hob, extractor fan, dish washer, fridge freezer and a quooker tap. The dining area offers double doors leading out to the rear garden which is south facing with a paved seating area and raised lawn with a retaining wall.

The first floor offers four bedrooms, three of which are doubles and a family bathroom. The master bedroom benefits from built in wardrobe as well as an en-suite bathroom with a rainfall shower.

There is also a driveway to the front for three vehicles. Please do call us for further information or to book in an internal viewing.





Key Features

- Spacious And Superbly Presented Detached Family Home
- No Onward Chain
- Four Good Sized Bedrooms
- Living Room And A Study
- Parking For Three
- Bathroom And En-Suite
- Great School Catchment Area
- Two Solar Panels
- EPC Rating B
- Council Tax Band E

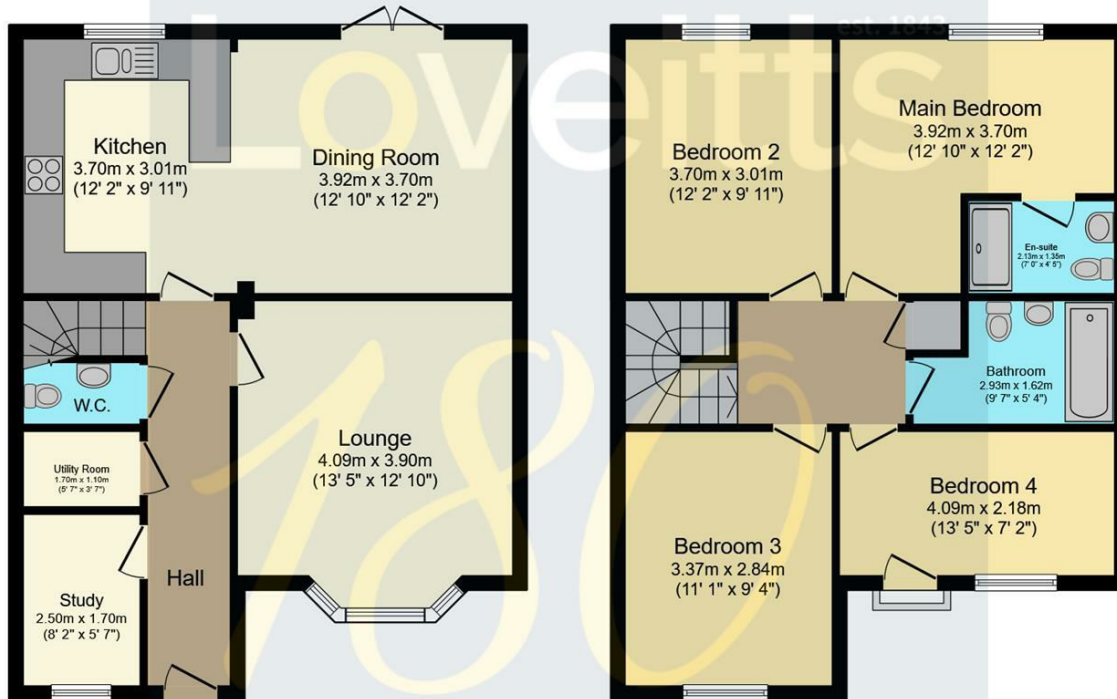
**Offers Over
£475,000**

EPC Rating - B

Tenure - Freehold

Council Tax Band - E

Local Authority -



Ground Floor

Floor area 61.1 m² (658 sq.ft.)

First Floor

Floor area 60.5 m² (652 sq.ft.)

TOTAL: 121.7 m² (1,309 sq.ft.)

This floor plan is for illustrative purposes only. It is not drawn to scale. Any measurements, floor areas (including any total floor area), openings and orientations are approximate. No details are guaranteed, they cannot be relied upon for any purpose and do not form any part of any agreement. No liability is taken for any error, omission or misstatement. A party must rely upon its own inspection(s). Powered by www.Propertybox.io