



Pickford Green Lane, Coventry, CV5 9AQ

Loveitts
PART OF | SHELDON BOSLEY KNIGHT

Property Description

***Available Now - Council Tax Band
F***

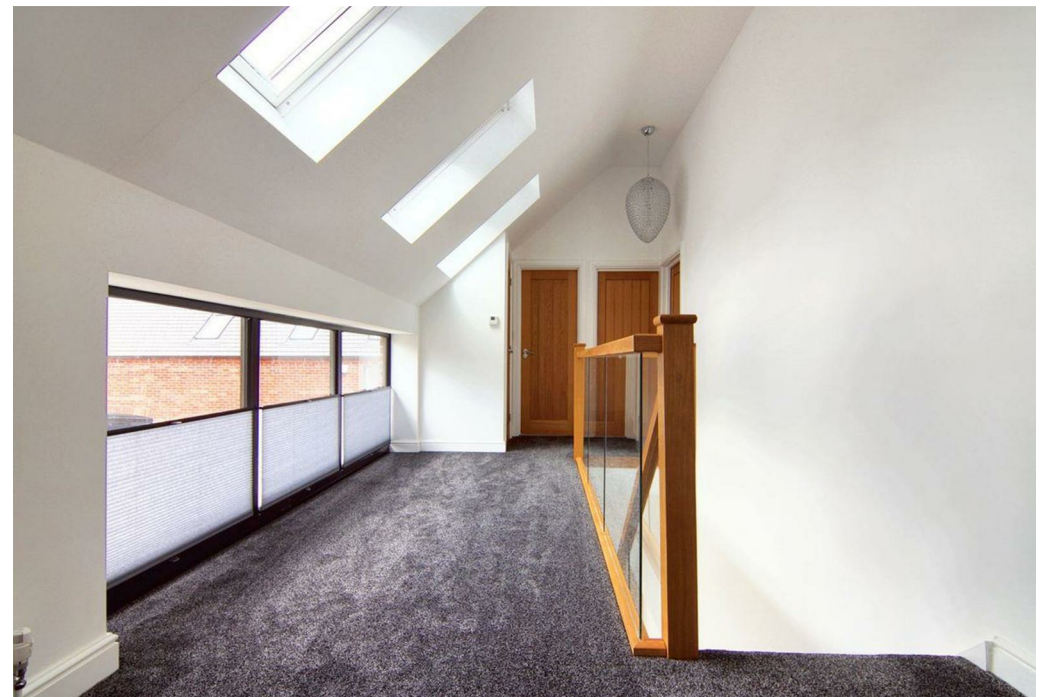
This spacious four-bedroom home located to the south of Pickford Green.

The ground floor comprises a generously sized lounge spanning the width of the property, featuring patio doors leading to the garden. There is a large, modern kitchen with a breakfast bar and dining area, also with patio doors to the garden. Additional ground floor features include a home office, downstairs WC, and a utility room with access to the rear garden.

Upstairs, the property boasts two spacious master bedrooms, each with en-suite bathrooms and walk-in showers. There are also two further double bedrooms, all with fitted wardrobes and multiple skylights, as well as a large, modern family bathroom with a bathtub.

Further benefits include driveway parking, double glazing, underfloor heating, and a substantial rear garden.







Key Features

- Pickford Green
- Modern Look Throughout
- 4 Double Bedrooms
- 1 Family Bathroom
- 2 Ensuites
- Large Rear Garden
- Large Driveway
- Underfloor Heating

£2,500 PCM