



Frilsham Way, Coventry, CV5 9LJ

Loveitts

PART OF | SHELDON BOSLEY KNIGHT

Property Description

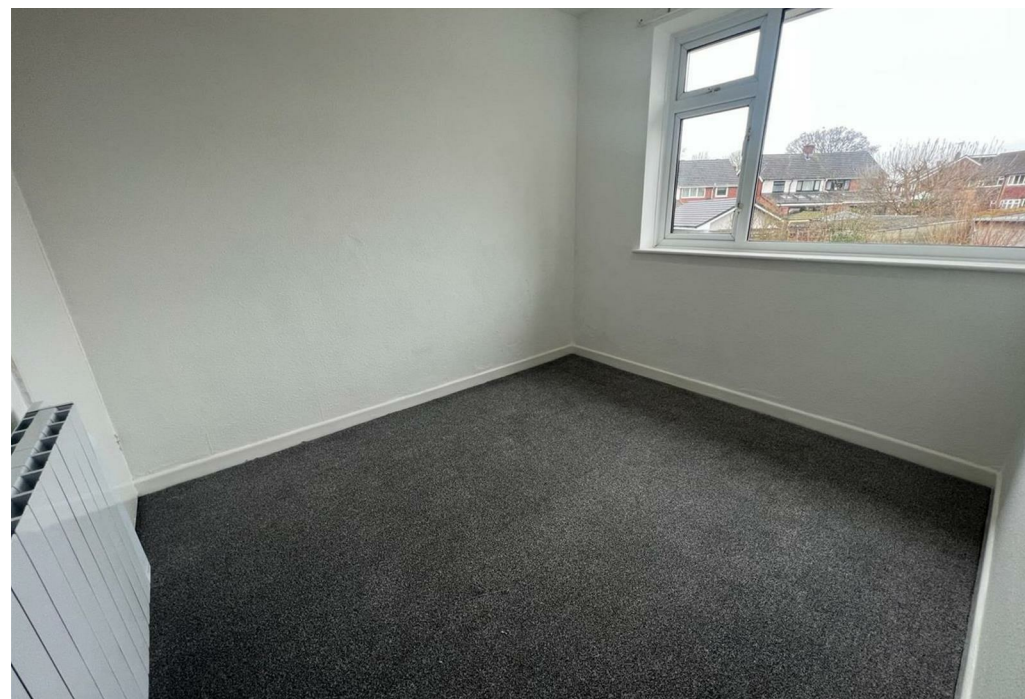
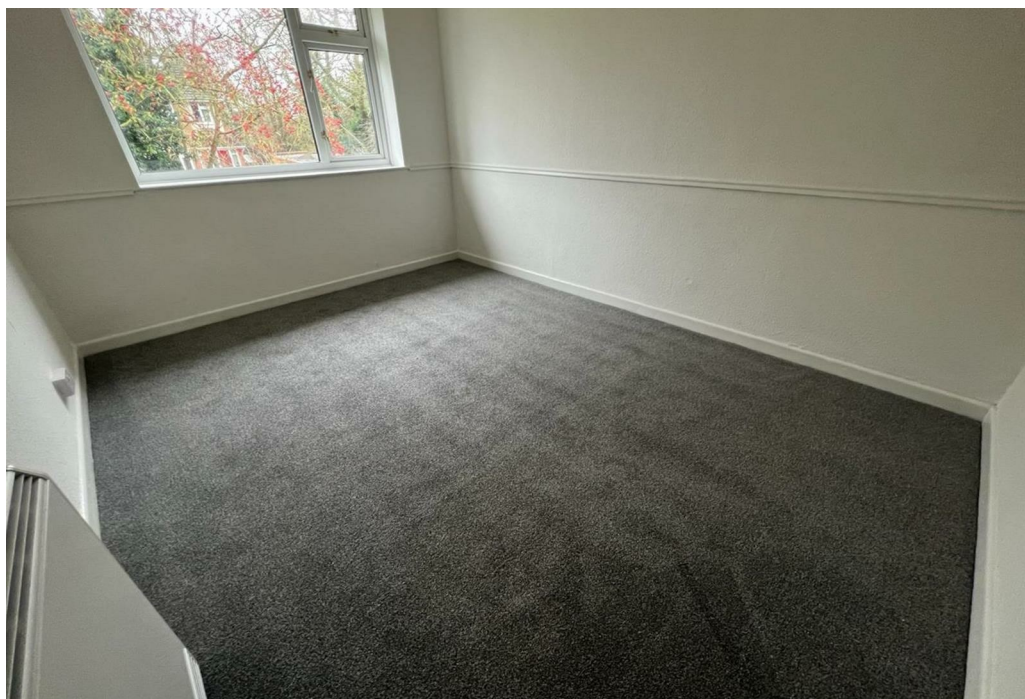
This two bedroom first floor maisonette is situated in Allesley Park, Coventry. The property briefly comprises of entrance hallway, lounge, modern fitted kitchen, one double bedroom, one single bedroom and a family bathroom with bath, w/c and sink.

The property benefits from a small garden, single garage, double glazing and electric heating.

**** Available Now - Deposit £950****

Council Tax Band A - Minimum Tenancy 6 Months







Key Features

- Allesley Park, Coventry
- First Floor
- Two Bedrooms
- Maisonette
- Unfurnished
- Available NOW
- Rear Garden
- Garage
- Council Tax Band A

£875 PCM