



Poplar Road, Earlsdon, Coventry, CV5 6FX

Loveitts
PART OF | SHELDON BOSLEY KNIGHT

Property Description

Loveitts are pleased to bring to market this three bedroom, end terraced family home situated in the highly sought after residential location of Earlsdon. The property is a great purchase for a first time buyer, family or investor due to it being positioned less than a minute's walk away from Earlsdon High Street providing great access to local, shops, amenities, restaurants and bars. The property also benefits from being in the school catchment for Finham Park School and Earlsdon Primary School, the property is also offered for sale with no onward chain.

The ground floor accommodation on offer comprises entrance hallway, lounge with stairs rising to the first floor, a separate dining room, fitted kitchen with oven and hob and a ground floor W.C. To the first floor are two double bedrooms, a single bedroom and the contemporary family bathroom with bath.

Further benefits include a low maintenance rear garden, gas central heating and double glazing throughout.

Loveitts highly recommends viewing this property to fully appreciate all it has to offer.

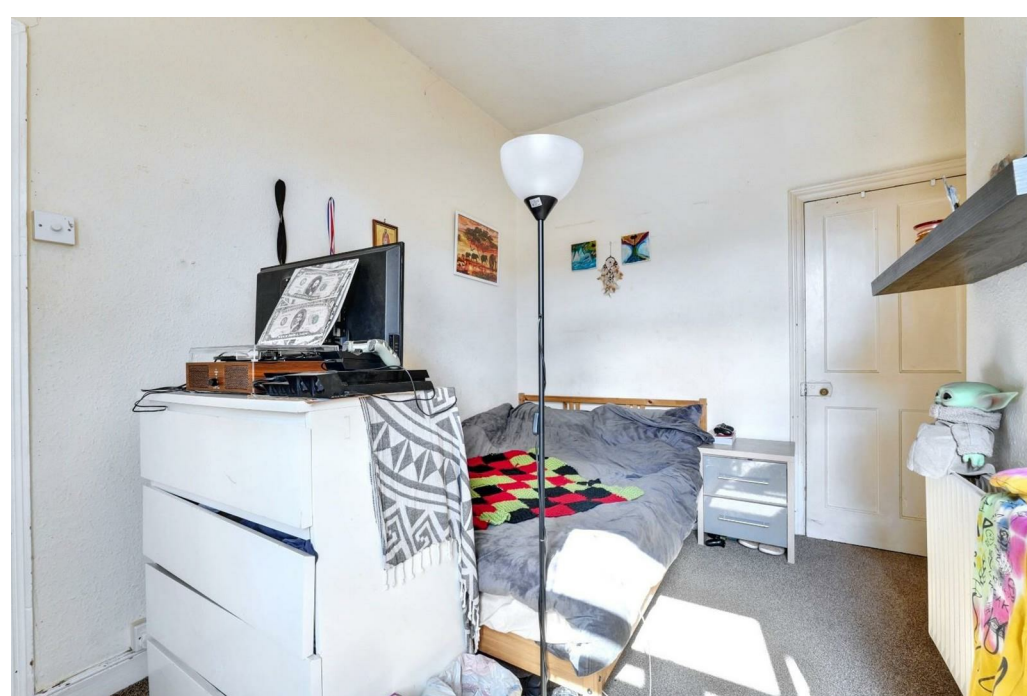
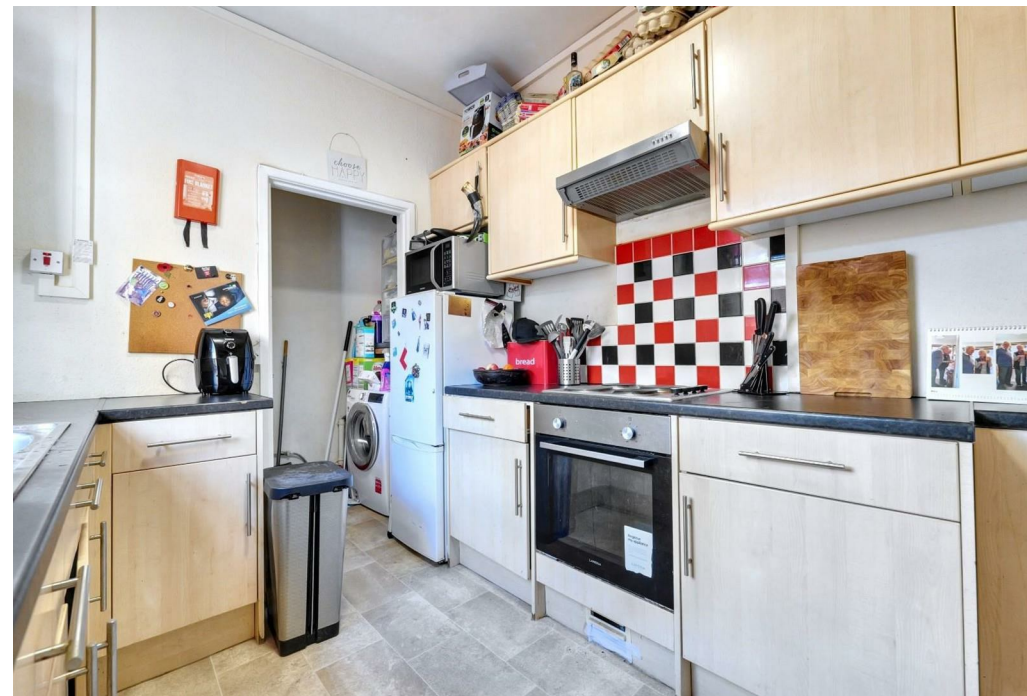




Key Features

- End Terraced Family Home
- Three Bedrooms
- Ground Floor W.C and Upstairs Bathroom
- Lounge
- Separate Dining Room
- Fitted Kitchen
- Prime Earlsdon Location
- Finham Park and Earlsdon Primary Catchment
- No Onward Chain
- EPC - E

**Offers Over
£190,000**



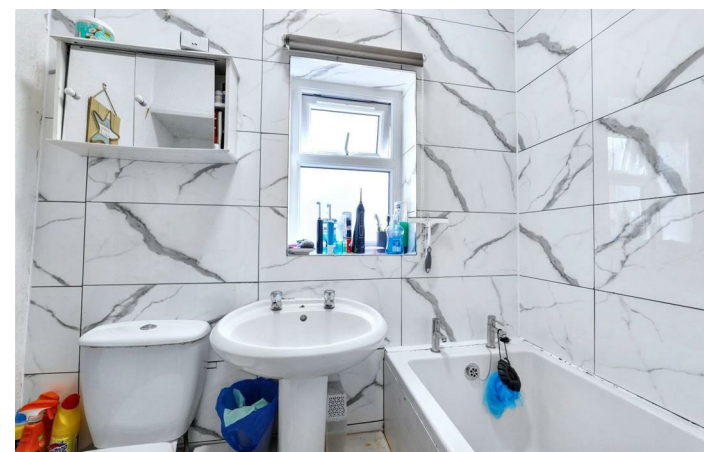
Ground Floor
Approx. 40.3 sq. metres (433.8 sq. feet)



First Floor
Approx. 39.8 sq. metres (428.0 sq. feet)



Total area: approx. 80.1 sq. metres (861.8 sq. feet)



EPC Rating - E

Tenure - Freehold

Council Tax Band - B

Local Authority
Coventry

We routinely refer clients to both our recommended Legal Firm and a panel of Financial Services Providers. It is your decision whether you choose to deal with these companies. In making that decision, you should know that we receive a referral fee



To view this property please contact our Loveitts Coventry (Sales) office
on 02476 258421

Loveitts

PART OF | SHELDON BOSLEY KNIGHT