



Harefield Court, Harefield Road, Coventry, CV2 4BX

Loveitts
PART OF | SHELDON BOSLEY KNIGHT

Property Description

A great opportunity to acquire this generous three bedroom, first floor apartment situated in the popular residential location on Stoke. The property is perfect for a first time buyer or investor due to its close proximity to local shops, amenities and the City Centre. The property is available for sale with no onward chain and has an estimated potential rental of £950pcm.

The accommodation on offer comprises a 17ft open plan lounge/kitchen/diner, sizeable bathroom and three bedrooms with the principle containing an ensuite shower room. Further benefits include gas central heating, intercom entrance and an allocated parking space.

Loveitts highly recommends viewing this property to fully appreciate all there is to offer.



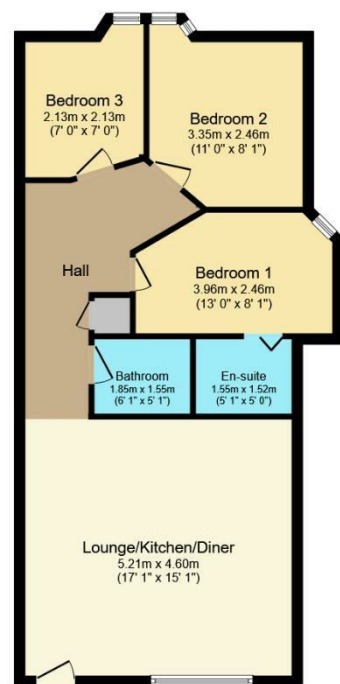


Key Features

- Three Bedrooms
- First Floor Apartment
- 977 Year Lease Remaining
- Open Plan Kitchen/Lounge/Diner
- Principle Bedroom with Ensuite
- Bathroom
- Allocated Parking Space
- No Onward Chain
- Popular Location
- EPC - C

**Offers Over
£135,000**



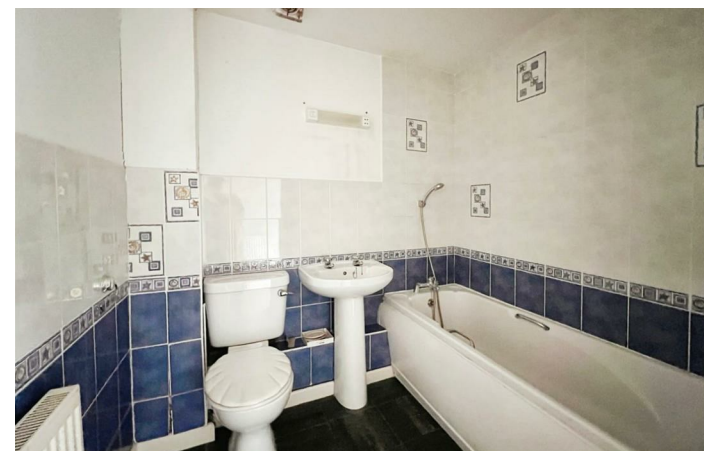


Floor Plan

Floor area 72.7 m² (782 sq.ft.)

TOTAL: 72.7 m² (782 sq.ft.)

This floor plan is for illustrative purposes only. It is not drawn to scale. Any measurements, floor areas (including any total floor area), openings and orientations are approximate. No details are guaranteed, they cannot be relied upon for any purpose and do not form any part of any agreement. No liability is taken for any error, omission or misstatement. A party must rely upon its own inspection(s). Powered by www.Propertybox.io



EPC Rating - C

Tenure - Leasehold

Council Tax Band -

Local Authority

We routinely refer clients to both our recommended Legal Firm and a panel of Financial Services Providers. It is your decision whether you choose to deal with these companies. In making that decision, you should know that we receive a referral fee



To view this property please contact our Loveitts Coventry (Sales) office
on 02476 258421

Loveitts

PART OF | SHELDON BOSLEY KNIGHT