



Oddicombe Croft, Styvechale, Coventry, CV3 5PB

Loveitts

PART OF | SHELDON BOSLEY KNIGHT

Property Description

STYVECHALE LOCATION

Loveitts are delighted to bring to market this well presented, three bedroom, semi-detached family home positioned in the highly desirable location of Styvechale and offered for sale with no onward chain. The property is perfect for a family due to its close proximity to local shops, amenities and schools and also offers the opportunity for extension subject to planning permission.

The ground floor accommodation on offer comprises entrance hallway with stairs rising to the first floor, a spacious and newly decorated lounge, separate dining room with sliding patio doors leading to the rear garden and a fitted kitchen. To the first floor are two spacious double bedrooms with both containing fitted sliding door wardrobes, a single bedroom and generous family bathroom featuring bath and separate shower cubicle.

Externally the property boasts a driveway with ample parking for multiple vehicles, a sizeable rear garden mostly laid to lawn with decking area and shed.

Further benefits include gas central heating, double glazing throughout and a boarded loft with skylights.

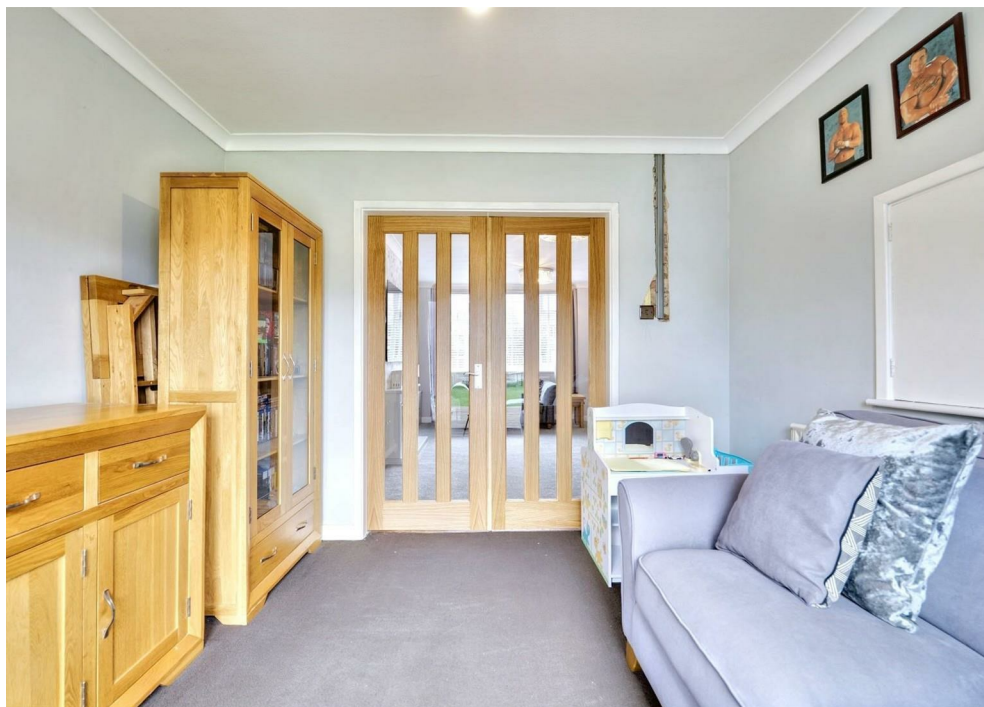




Key Features

- Semi-Detached Family Home
- Three Bedrooms
- Newly Renovated Lounge
- Separate Dining Room
- Fitted Kitchen
- Generous Bathroom with Bath and Separate Shower
- Driveway with Ample Parking for Multiple Vehicles
- Highly Sought After Residential Location
- No Onward Chain
- EPC - C

£340,000



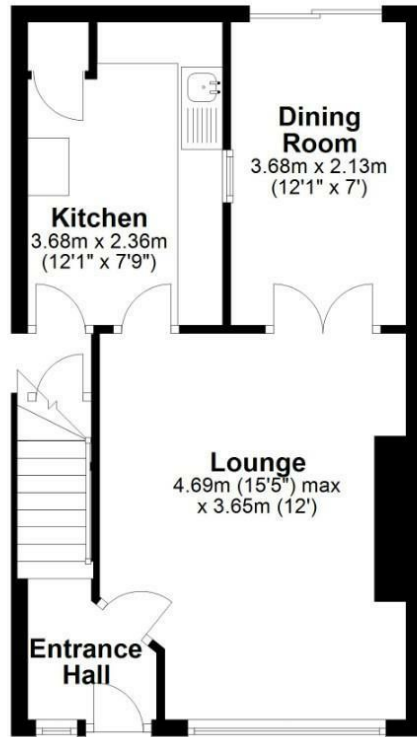




Floorplan

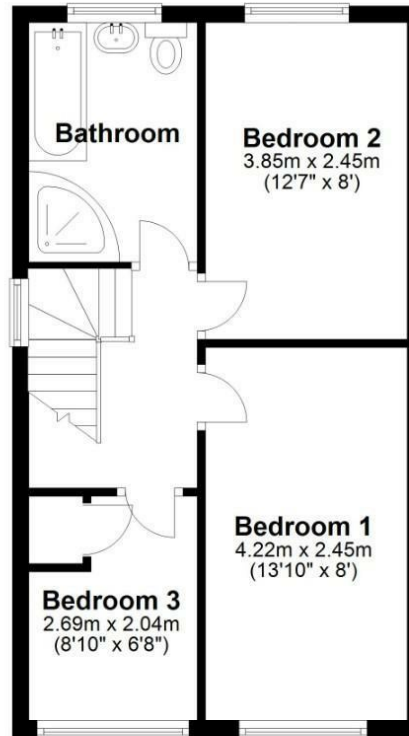
Ground Floor

Approx. 38.9 sq. metres (418.5 sq. feet)



First Floor

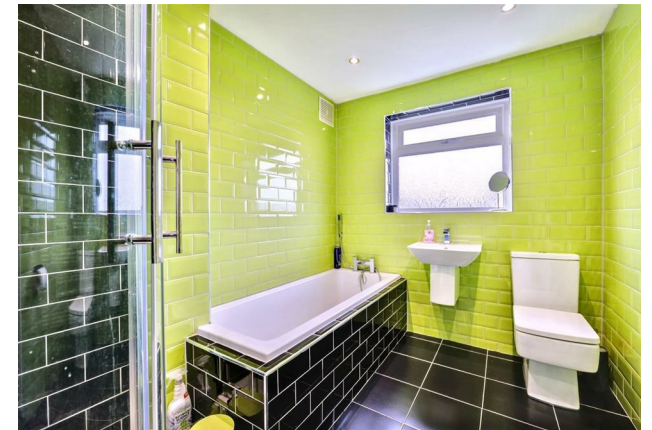
Approx. 38.4 sq. metres (412.9 sq. feet)



Total area: approx. 77.2 sq. metres (831.4 sq. feet)

All efforts have been made to ensure that the measurements on this floorplan are accurate however these are for guidance purposes only.

Plan produced using PlanUp.



EPC Rating - C

Tenure - Freehold

Council Tax Band - D

Local Authority

We routinely refer clients to both our recommended Legal Firm and a panel of Financial Services Providers. It is your decision whether you choose to deal with these companies. In making that decision, you should know that we receive a referral fee



We routinely refer clients to both our recommended Legal Firm and a panel of Financial Services Providers. It is your decision whether you choose to deal with these companies. In making that decision, you should know that we receive a referral fee

Loveitts

PART OF | SHELDON BOSLEY KNIGHT