



Pearson Avenue, Bell Green, Coventry, CV6 7DA

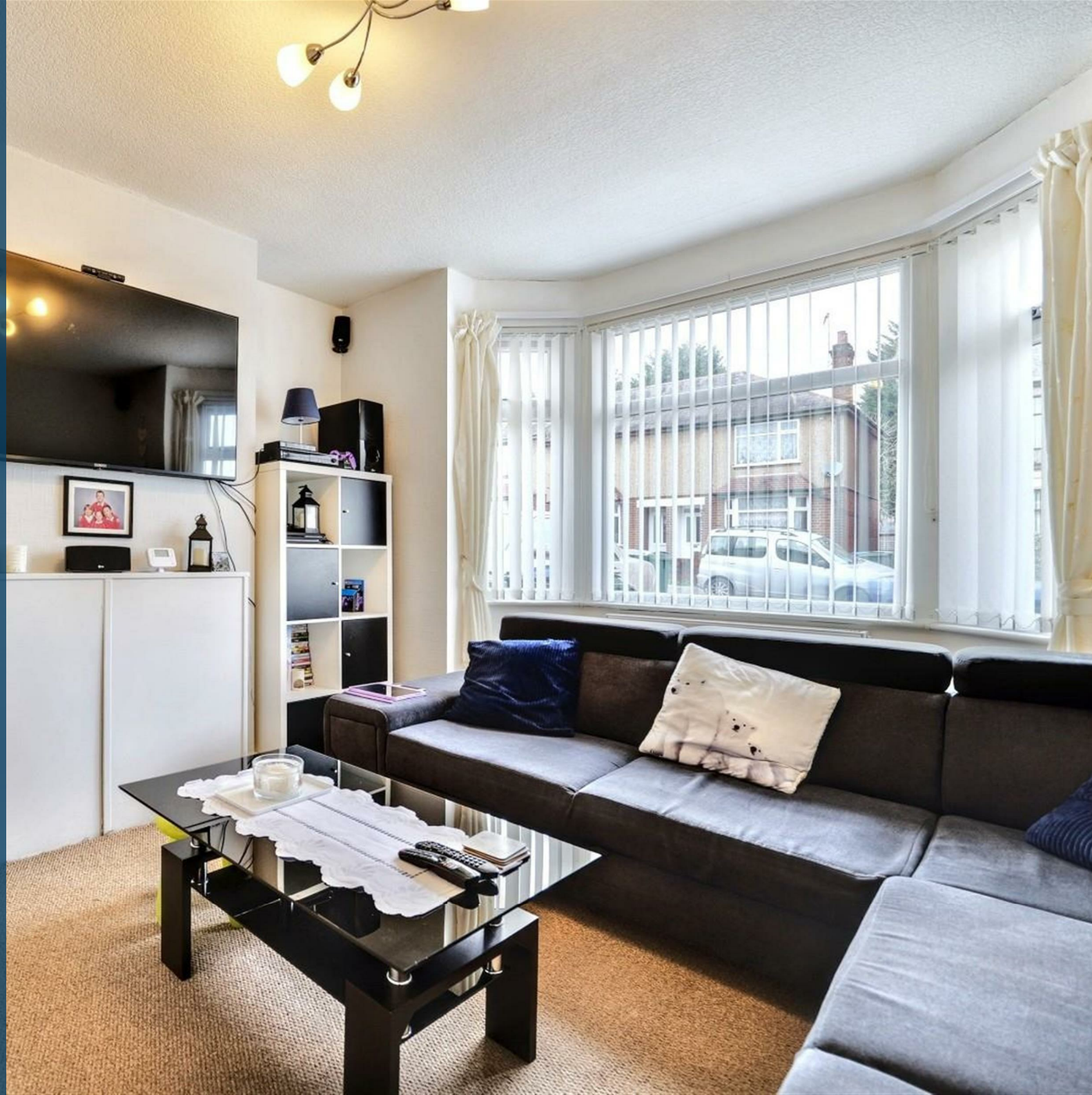
Loveitts
PART OF | SHELDON BOSLEY KNIGHT

Property Description

A fantastic opportunity to acquire this well-presented, three bedroom, family home situated in the popular residential location of Bell Green. The property is perfect for a first time buyer, family or investor due its close proximity to local shops, amenities, schools and road links. The property is also offered for sale with no onward chain.

The ground floor accommodation on offer comprises entrance hallway with stairs rising to the first floor, lounge with bay window, separate dining room and fitted kitchen with access to the rear garden. To the first floor are two spacious double bedrooms, one single bedroom and family bathroom.

Further benefits include a front paved garden, generous rear garden mostly laid to lawn with decking area and rear access, gas central heating and double glazing throughout.



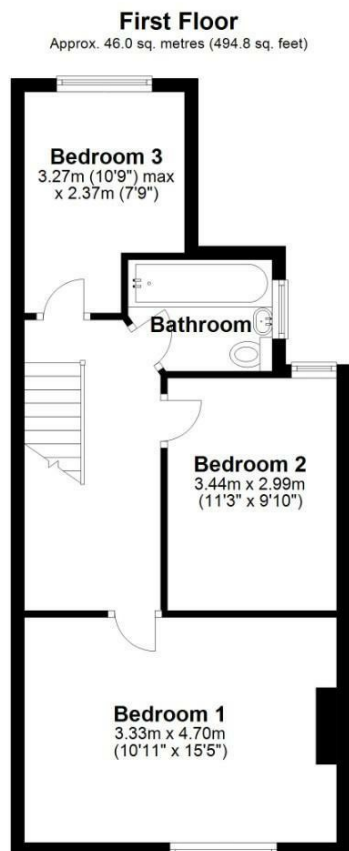
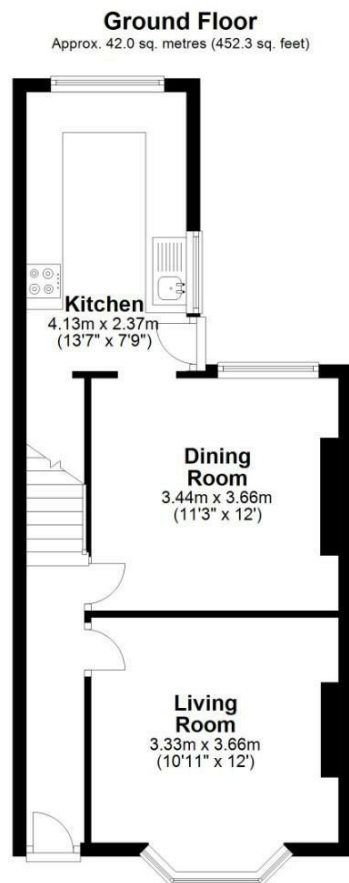


Key Features

- Three Bedroom Family Home
- Lounge with Bay Window
- Separate Dining Room
- Fitted Kitchen
- Family Bathroom
- Front and Rear Gardens
- Popular Residential Location
- Great First time Buy
- No Onward Chain
- EPC - C

**Offers Over
£180,000**





Total area: approx. 88.0 sq. metres (947.0 sq. feet)

All efforts have been made to ensure that the measurements on this floorplan are accurate however these are for guidance purposes only.
Plan produced using PlanUp.



EPC Rating - C

Tenure - Freehold

Council Tax Band - A

Local Authority
Coventry

We routinely refer clients to both our recommended Legal Firm and a panel of Financial Services Providers. It is your decision whether you choose to deal with these companies. In making that decision, you should know that we receive a referral fee



To view this property please contact our Loveitts Coventry (Sales) office
on 02476 258421