



Signals Drive, Coventry, CV3 1PA

Loveitts

PART OF | SHELDON BOSLEY KNIGHT

Property Description

A fantastic opportunity to acquire this two bedroom, second floor apartment situated in the popular New Stoke Village. The property is ideal for a first time buyer or investor, is offered for sale with no onward chain and has a potential yield of over 8%

The property comprises an entrance hallway with large storage cupboard, two double bedrooms with the principal featuring an en-suite shower room, open plan living which combines the lounge, dining area and modern kitchen and a further family bathroom.

Further benefits include intercom entrance and an allocated parking space and shared use of within the communal grounds and access to a shared locked cycle store.

This spacious second floor apartment also benefits from gas central heating, double glazing and a 114 year lease.



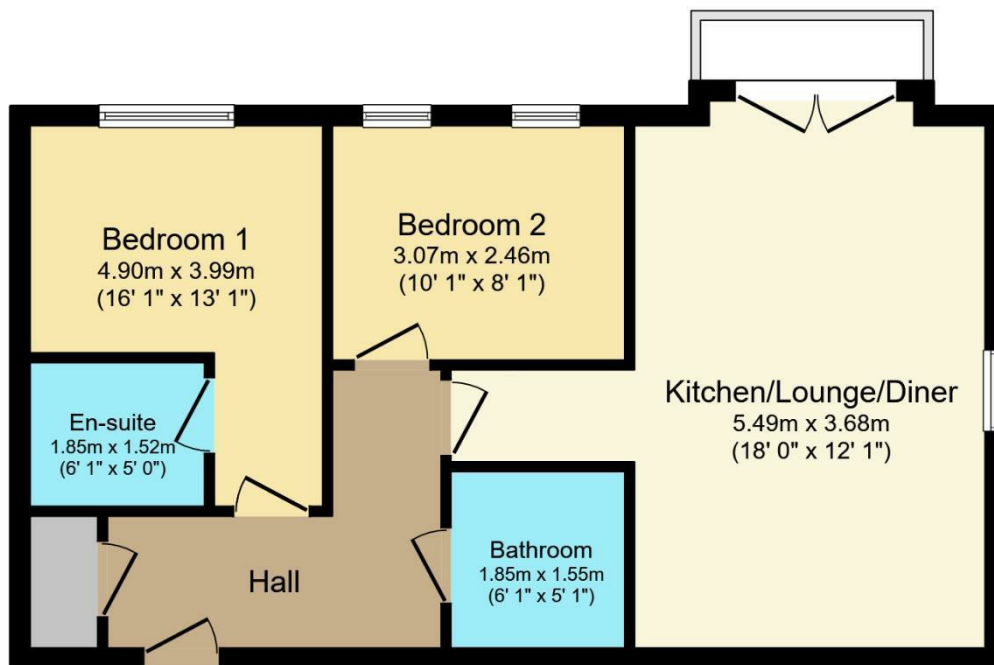


Key Features

- Second Floor Apartment
- Two Double Bedrooms
- Bathroom and En-Suite
- Open Plan Lining/Kitchen/Diner
- Balcony
- Allocated Parking Space
- No Onward Chain
- Ideal First Time Purchase
- 114 Year Lease
- EPC - B

£150,000





Floor Plan

Floor area 55.6 sq.m. (598 sq.ft.)

TOTAL: 55.6 sq.m. (598 sq.ft.)

This floor plan is for illustrative purposes only. It is not drawn to scale. Any measurements, floor areas (including any total floor area), openings and orientations are approximate. No details are guaranteed, they cannot be relied upon for any purpose and do not form any part of any agreement. No liability is taken for any error, omission or misstatement. A party must rely upon its own inspection(s). Powered by www.Propertybox.io



EPC Rating - B

Tenure - Leasehold

Council Tax Band - B

Local Authority

We routinely refer clients to both our recommended Legal Firm and a panel of Financial Services Providers. It is your decision whether you choose to deal with these companies. In making that decision, you should know that we receive a referral fee



To view this property please contact our Loveitts Coventry (Sales) office
on 02476 258421

Loveitts

PART OF | SHELDON BOSLEY KNIGHT