



Farren Road, Wyken, Coventry, CV2 5EJ

**Loveitts**

PART OF | SHELDON BOSLEY KNIGHT



# Property Description

This well-presented, three bedroom family home situated in the sought after residential location of Wyken is perfect for a first time buyer or family. Positioned close to local amenities, road links, schools and University Hospital Coventry this property offers an abundance of positive features for its new owner.

The ground floor accommodation on offer comprises entrance hallway with stairs rising to the first floor, fitted kitchen with bespoke handmade cabinets and lounge with bay window and partitioning doors which open to the separate dining room which gives the versatile option for a open lounge/diner. To the first floor are two double bedrooms, one single bedroom and the family bathroom featuring bath and over shower.

Externally the property boasts front garden, rear garden mostly laid to lawn with patio area and a generous garage.

Further benefits include gas central heating throughout.





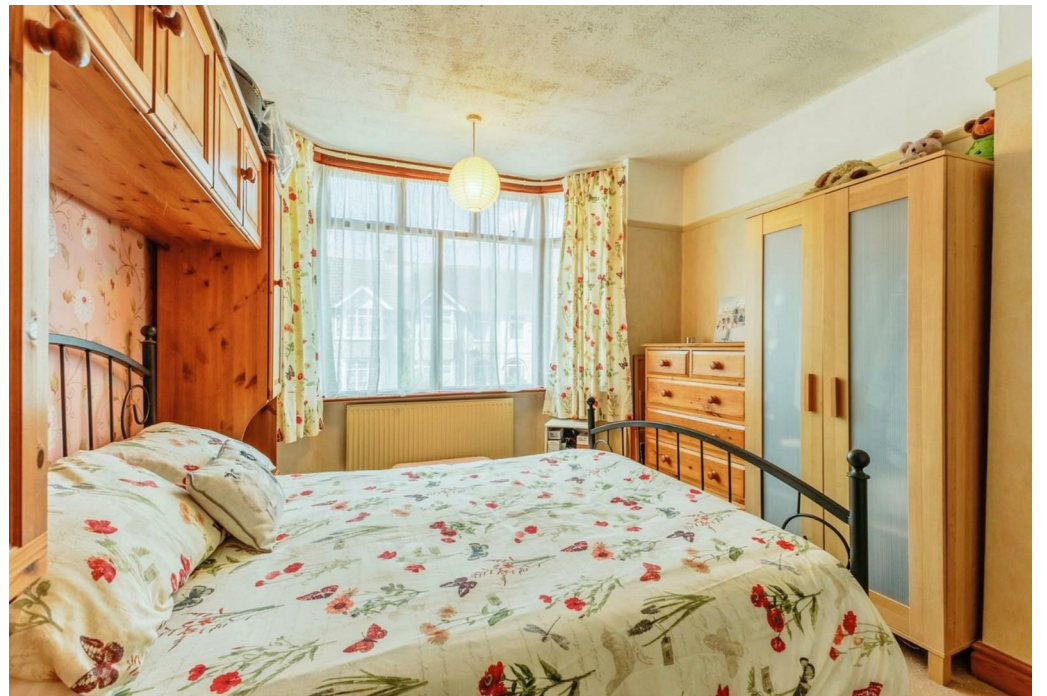


## Key Features

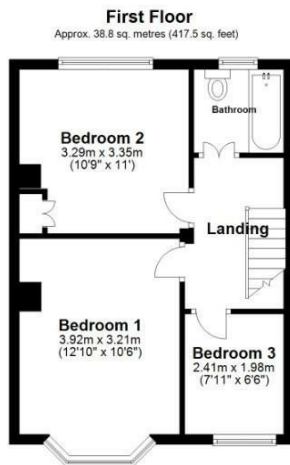
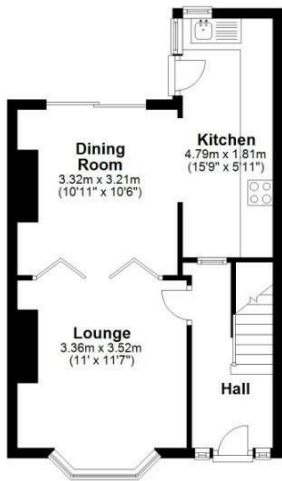
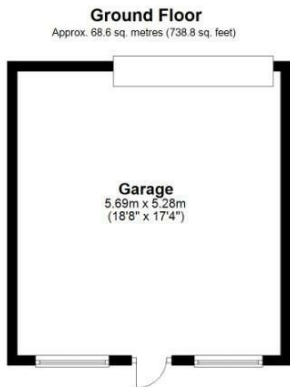
- Three Bedroom Family Home
- Lounge with Bay Window
- Dining Room
- Fitted Kitchen
- Family Bathroom
- Well-Presented Throughout
- Sought After Location
- Front and Rear Gardens
- Garage
- EPC - TBC

**£220,000**









Total area: approx. 107.4 sq. metres (1156.2 sq. feet)

All efforts have been made to ensure that the measurements on this floorplan are accurate however these are for guidance purposes only.  
Plan produced using PlanUp.



EPC Rating - D

Tenure - Freehold

Council Tax Band - B

Local Authority  
Coventry

We routinely refer clients to both our recommended Legal Firm and a panel of Financial Services Providers. It is your decision whether you choose to deal with these companies. In making that decision, you should know that we receive a referral fee





To view this property please contact our Loveitts Coventry (Sales) office on 02476 258421

**Loveitts**

PART OF | SHELDON BOSLEY KNIGHT