

Loveitts est. 1843

part of

SHELDON  
BOSLEY  
KNIGHT

LAND AND  
PROPERTY  
PROFESSIONALS



Heath Road, Coventry, CV2 4PU



# Property Description

Loveitts are pleased to present this two bedroom second floor apartment situated in Stoke, Coventry. The property briefly comprises of hallway, bathroom with bath, w/c and sink, fitted kitchen, two double bedrooms, one with fitted wardrobes and a spacious living room.

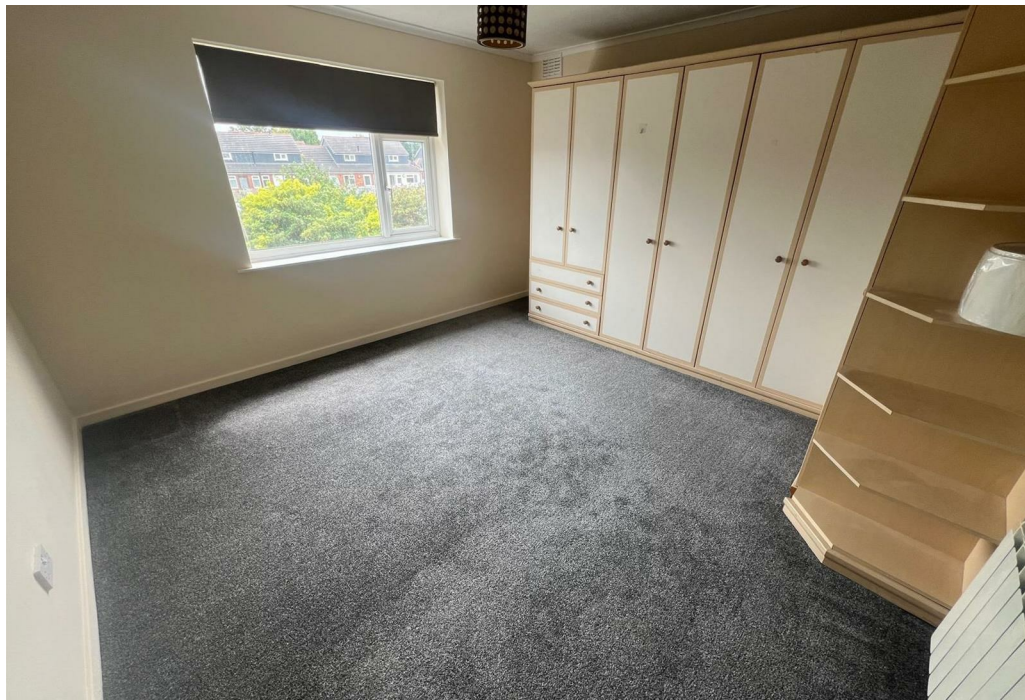
The property benefits from on-street parking and located close to local amenities.

\*\*Available Now - Deposit £980\*\*

\*Council Tax Band A - Minimum Tenancy 12 Months\*











## Key Features

- Flat
- Stoke
- Second Floor
- Two Bedrooms
- Available Now
- Unfurnished
- On-Street Parking
- Council Tax Band A

**£850 PCM**