

Loveitts est. 1843

part of

SHELDON
BOSLEY
KNIGHT

LAND AND
PROPERTY
PROFESSIONALS



Warwick Row, Coventry, CV1 1EY

Property Description

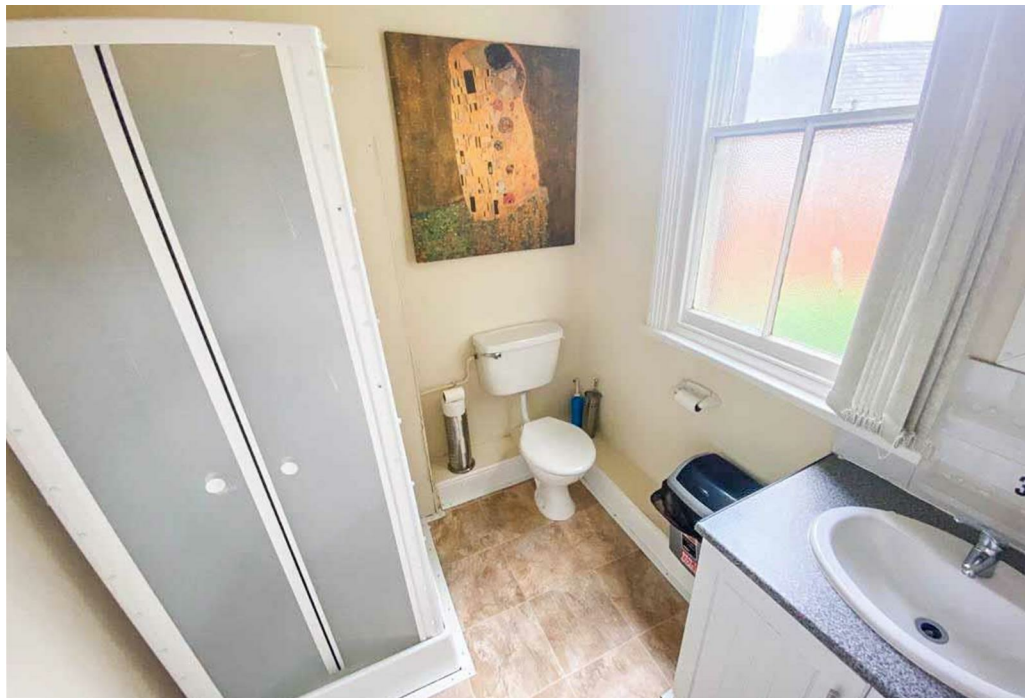
Loveitts are pleased to present a very spacious room in the heart of Coventry City Centre. The room is available now and is located within walking distance of Coventry University and Coventry Train Station.

The room is located on the first floor and is furnished with double bed, cabinet, sofa, wardrobe, chest of drawers, table, desk, fridge freezer, microwave and TV. The accommodation includes use of a shared fitted kitchen with appliances and designated cupboard space and a downstairs shower room with walk-in shower, w/c and sink.

The property also includes all services including full fibre broadband and weekly cleaning to shared areas.

Available Now at £475 pcm
Deposit £545
£50 per month contribution to utility bills





Key Features

- Coventry City Centre
- Shared House
- First Floor
- Available Now
- Fully Furnished
- Communal Kitchen
- £50 Utility Bills Contribution
- Laundry Room
- Double Bedroom

**£475 Per
Calendar Month**