

Loveitts est. 1843

part of

SHELDON
BOSLEY
KNIGHT

LAND AND
PROPERTY
PROFESSIONALS



Gloucester House, Drapers Fields, Coventry, CV1 4RB

Property Description

A fantastic opportunity to acquire this one bedroom, ground floor apartment overlooking the Coventry Canal and situated approximately a 15 minute walk from the City Centre. The property is well presented throughout and is a great purchase for a first time buyer, professional or investor looking to add to their portfolio.

The accommodation comprises entrance hallway, lounge/diner with windows overlooking the canal, fitted kitchen, bathroom with bath and over shower and a spacious double bedroom.

Further benefits include communal grounds and parking, double glazing throughout and secure intercom entrance. The property is also offered for sale with no onward chain.



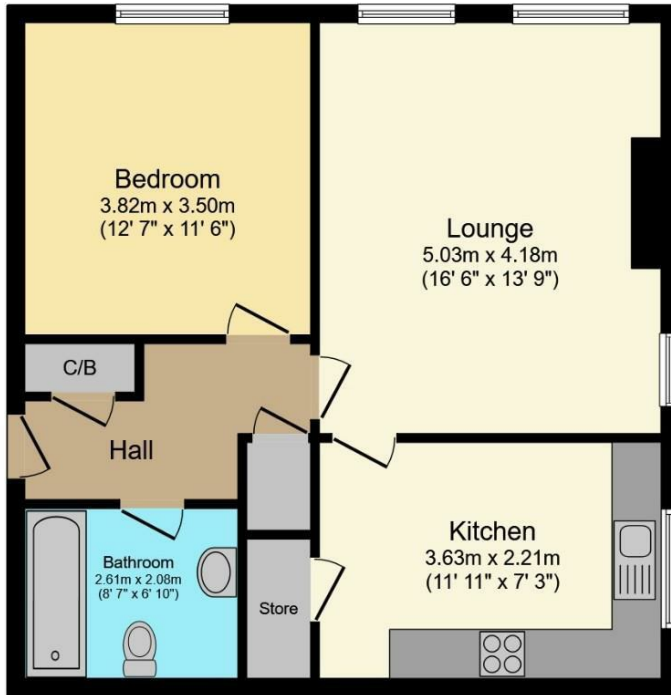


Location

Drapers Fields is positioned overlooking Coventry Canal and is within walking distance to Coventry City Centre, with a vast variety of shops, restaurants and amenities.

The property stands close to the nearest bus route and is close to A444 providing easy access to M6 motorway and popular landmarks within Coventry. Local shops and amenities are close by.





Floor Plan

Floor area 62.4 m² (672 sq.ft.)

TOTAL: 62.4 m² (672 sq.ft.)

This floor plan is for illustrative purposes only. It is not drawn to scale. Any measurements, floor areas (including any total floor area), openings and orientations are approximate. No details are guaranteed, they cannot be relied upon for any purpose and do not form any part of any agreement. No liability is taken for any error, omission or misstatement. A party must rely upon its own inspection(s). Powered by www.Propertybox.io

Key Features

- Ground Floor Apartment
- Overlooking Coventry Canal
- Lounge/Diner
- Fitted Kitchen
- Bathroom
- Double Bedroom
- Communal Gardens
- Communal Parking
- No Onward Chain
- 72 Year Lease Remaining

£110,000

EPC Rating -

Tenure - Leasehold

Council Tax Band - A

Local Authority -
Coventry City