

Loveitts est. 1843

part of

SHELDON
BOSLEY
KNIGHT

LAND AND
PROPERTY
PROFESSIONALS



Stoney Stanton Road, Coventry, CV1 4FS

Property Description

STUDENTS 2023-2024 - LONG TERM AVAILABLE FOR 2024-2025

BILLS INCLUSIVE

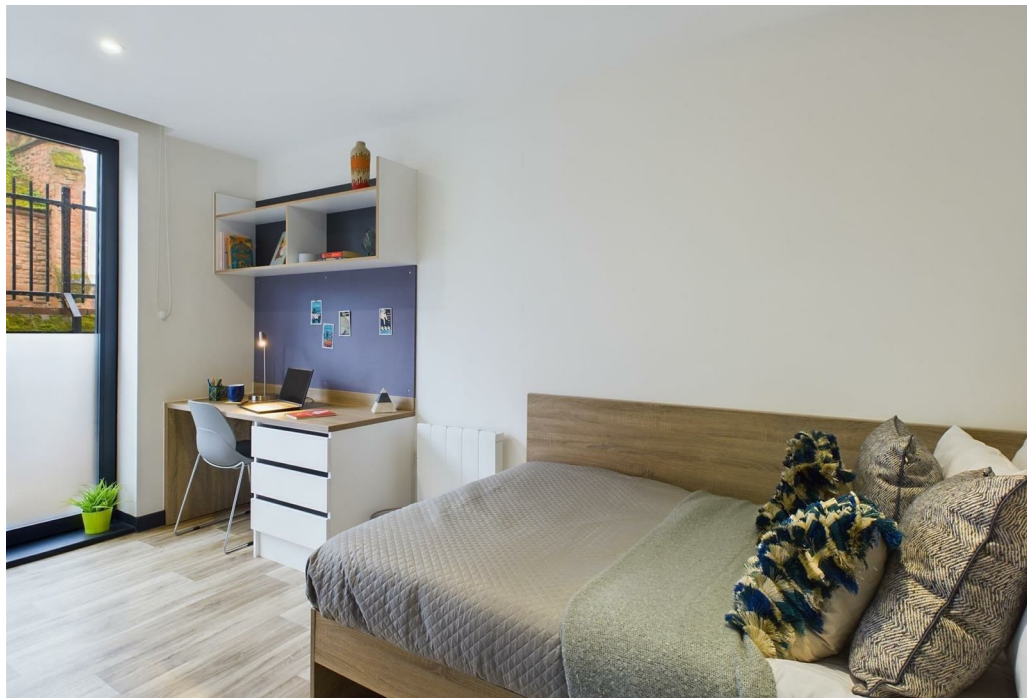
Loveitts are pleased to present en-suite rooms and studio flats at the impressive development, Eden Square located within close proximity to Coventry City Centre. This en-suite townhouse comprises of double bed, study area and en-suite bathroom with walk-in shower, w/c and sink. You will also have access to the communal kitchen including all appliances.

All rooms are let to a high, modern standard.

The development benefits a 24 hour reception, on-site gym, cinema room, games room, bike storage and much more! Viewings are highly recommend to appreciate what Eden Square has to offer.

** Available Now - Deposit £150**







Key Features

- Student
- En-Suite Townhouse
- Available Immediately
- Bills Inclusive
- On-Site Gym
- 24 Hour Reception
- Communal Kitchen
- £150 Deposit!
- Walking Distance To Coventry City Centre
- Viewing Recommended

£165 Per Week