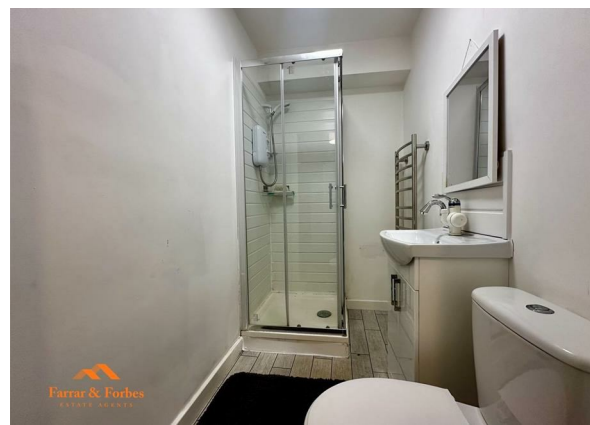


Bethesda House, Apartment 4 Bethesda Street, Burnley, BB11 1PR  
£495 Per month  
Council Tax Band: A



The first-floor apartment is located in the heart of Burnley town centre. Close to coffee shops, supermarkets, and restaurants.

The property comprises an entrance hallway, open plan lounge/kitchen with a range of matching wall and base units in white and a freestanding electric cooker, one good-sized double bedroom, and a shower room in white with vanity unit, chrome fixtures and fittings and a heated towel rail.

The property is further complemented by the modern-day comforts of double glazing and electric heaters, and has neutral décor and carpets throughout. The internet is included within the rent PCM.

An additional storage unit can be rented on the ground floor for £25 per calendar month.

All tenancies are on a shorthold tenancy for a minimum of 6 months, after this period it will be a rolling month-by-month contract unless agreed otherwise.

Holding fee equal to one week's rent payable on application. If tenancy proceeds, this is refunded as part of the first month's rent.



# Farrar & Forbes

ESTATE AGENTS

Source | Sell | Rent | Manage

11a Skelton Street  
Colne  
Lancashire  
BB8 9JE  
01282 914042  
Burnley@farrarandforbes.co.uk

