



MILLERS QUAY

Waterside apartments to rent.

Timeless views. Sustainable, modern architecture.
For optimists, futurists, adventurers,
peace lovers and busy bodies.
500 x 1 & 2 bedroom apartments.

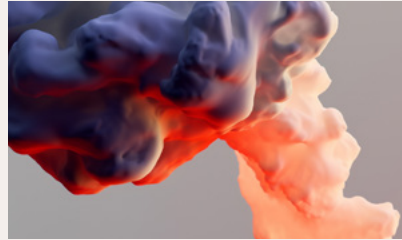


3



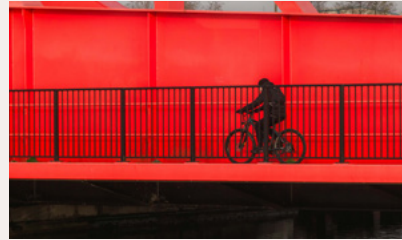
Introduction

5



Our Heritage

8



Our Mantra

15



Dockside
Apartments

22



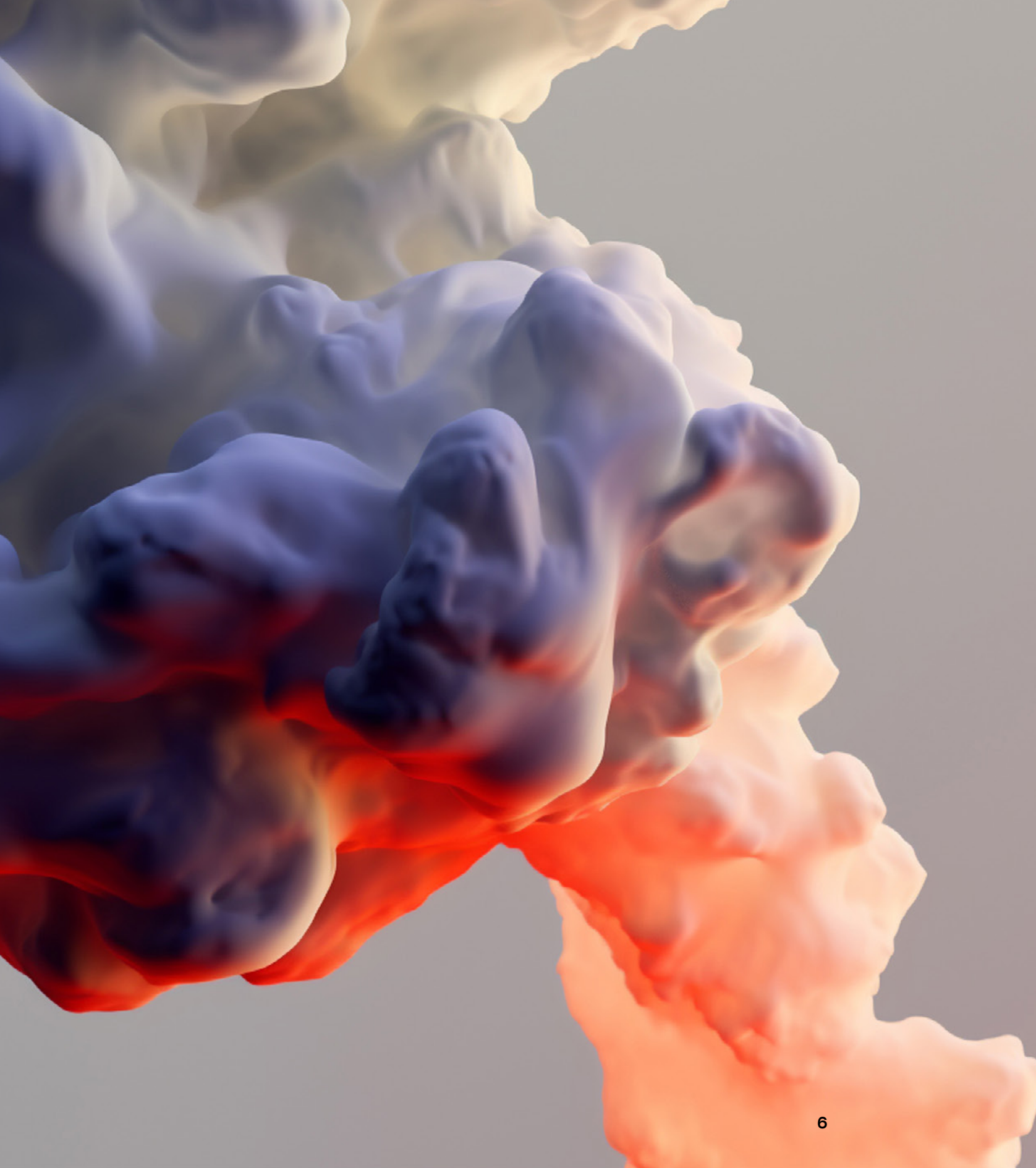
Exploration
& Discovery

**MILLERS QUAY IS THE
CORNERSTONE RESIDENTIAL
SCHEME TRANSFORMING
THE LEFT BANK OF THE
RIVER MERSEY.
OUR APARTMENTS ARE
AVAILABLE TO RENT.**



Striking and sustainable architecture, bright colours and big skies are just the start. The south-facing waterfront apartments include views across the docks, south-facing shared spaces, dockside walkways and access to new green spaces and micro parks.

**IT'S ALWAYS
BEEN A PLACE FOR
EXCITING REACTIONS
AND INTERACTIONS.**



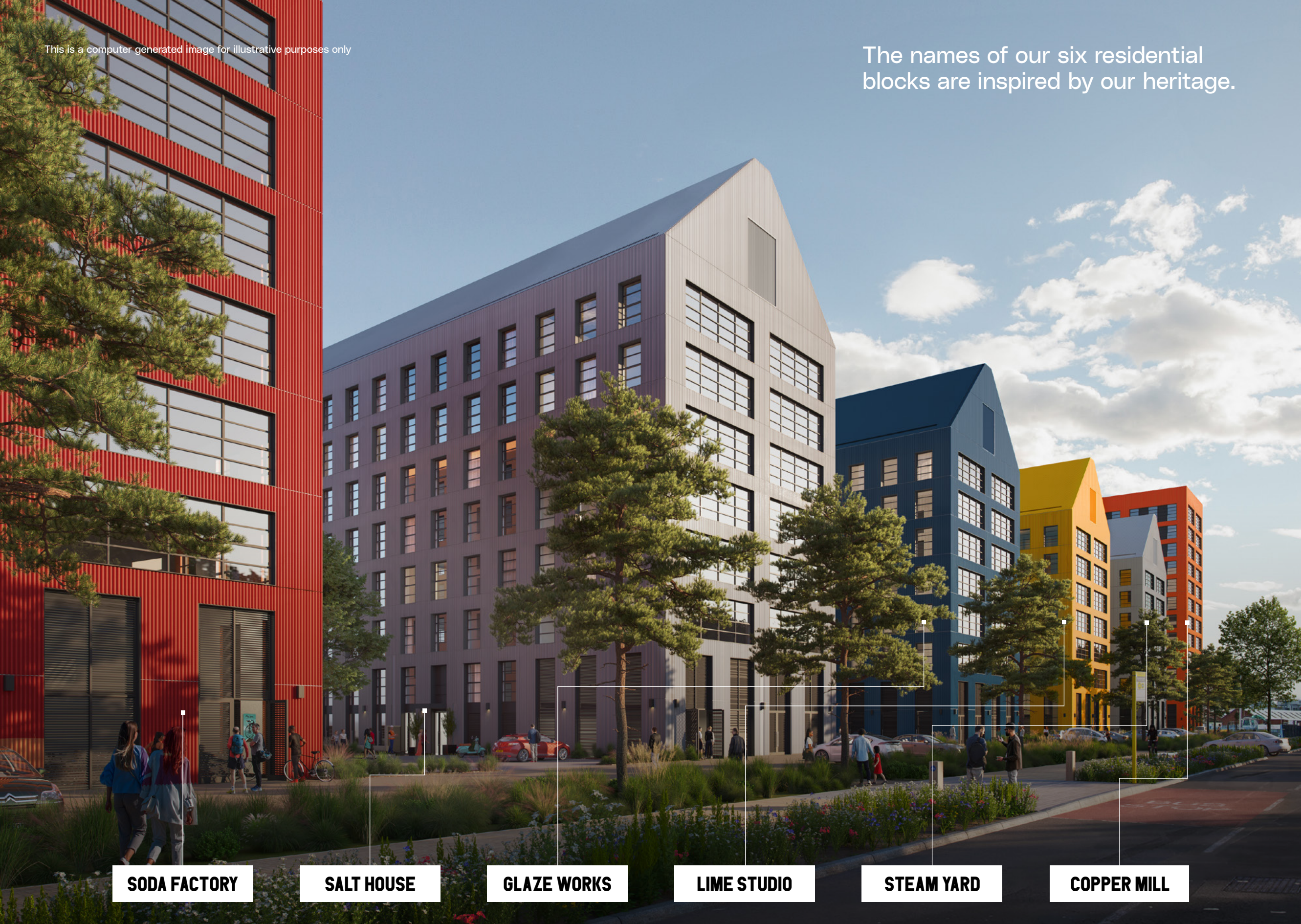
The Millers Quay site has played a key role in Birkenhead's industrial history.

Steam powered smelting plants and foundries that fed the manufacturing boom with iron, copper and cobalt, sat in tandem with chemical works making glazes and pigments for the ceramics and textiles of the day.

Throughout the 19th century and into the next, the quayside was full of activity, fabrication and innovation.

This is a computer generated image for illustrative purposes only

The names of our six residential blocks are inspired by our heritage.



SODA FACTORY

SALT HOUSE

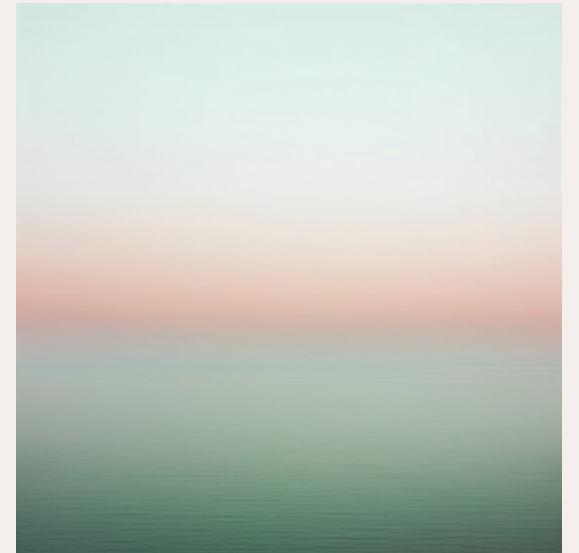
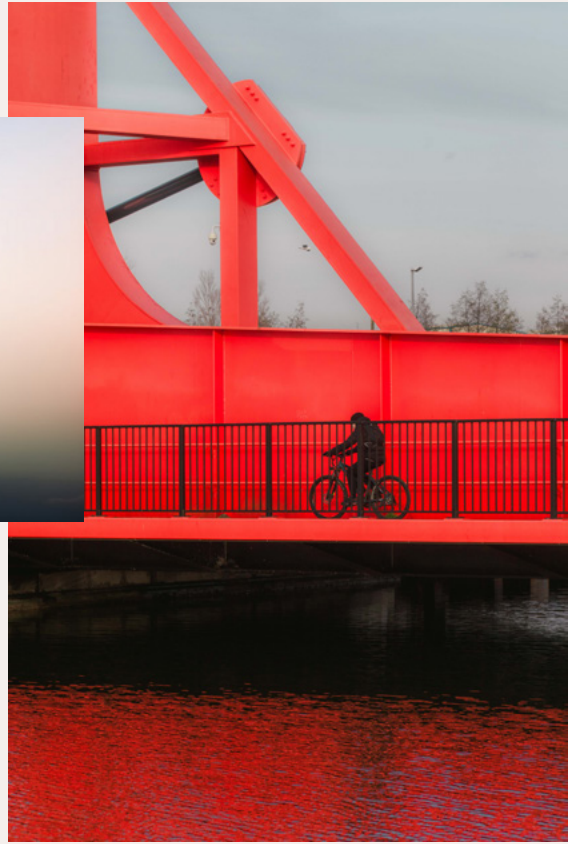
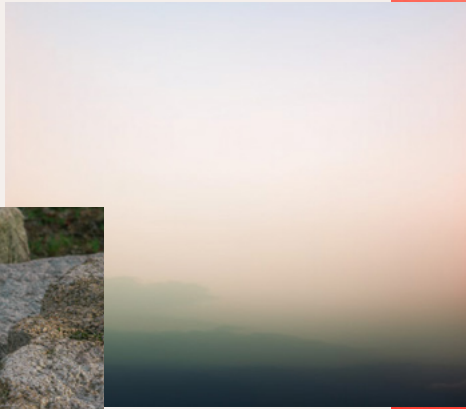
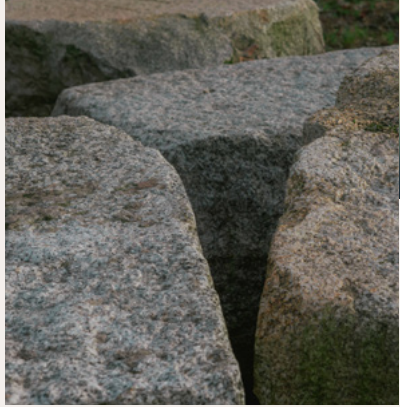
GLAZE WORKS

LIME STUDIO

STEAM YARD

COPPER MILL

**A PLACE FOR ALL.
WITH PIONEERING SPIRIT.
WE EMBRACE
THE ELEMENTS,
VALUE SPACE,
HAVE NO BARRIERS.**





Those who have a sunny outlook will love our south facing apartments – and the fantastic quality of life Wirral offers.

OPTIMISTS

Living a stones throw from Liverpool city centre allows the best of both worlds for those with an upbeat perspective.

Calling aficionados of modern architecture and bright interiors;

FUTURISTS

live a pioneering life in a welcoming community without barriers – lead the way!





For those who embrace the elements
– g
onment;

ADVENTURERS

waterside life, big skies and panoramic
views are the perfect backdrop for
exploration and discovery further afield.

For seekers of calm and a slice of urban village life, our dockside apartments will fit the bill.

PEACE LOVERS

Shared space, green walkways and access to parks gives you space to breathe.





You've got things to do, places to be, lots to fit in – all in between walking the dog or running 5k, of course.

BUSY BODIES

Our dockside walkways and access to nature allows you to build healthy routines for active lifestyles.

MODERN ARCHITECTURE AND BRIGHT INTERIORS



DANCE
FLOOR

MODERN ARCHITECTURE AND BRIGHT INTERIORS



Wherever you are in your home at Millers Quay you'll be able to take in its wonders. Admiring the City from the thirteenth floor, gazing out onto the residents' courtyards or kicking back on your balcony watching the Mersey river float by, there's always

a spectacle to capture your eye. And the interiors make no exception. With carefully designed finishes, hand-picked furniture and high-quality appliances, everything at Millers Quay has been meticulously selected.

Video Entry System

Electric panel heaters

Indesit kitchen appliances

Egger laminate worktops

Ceramic wall tiles

Porcelain floor tiles

Wall hung basin with shelving

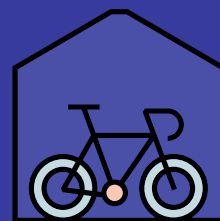
Mixer shower

Down lighters

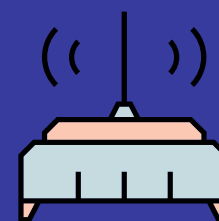
We like to make life easy which is why we've designed our services to be as flexible as possible. From generous storage for your bits and bobs, high speed WIFI to keep you connected and a 'pets welcome' policy so you can bring your furry friend, life at Millers Quay is built around you.

GET HOME, PUT YOUR FEET UP

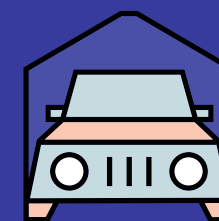
Our friendly team is on hand to answer queries and our 24-hour accessible parcel room means your parcels can be stored for your collection whether you are in or out. We've even included a complimentary handyman service to help you personalise your new home.



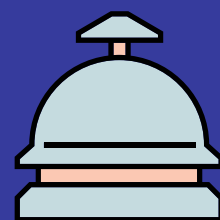
*Bike storage



High speed fibre



*Off street parking



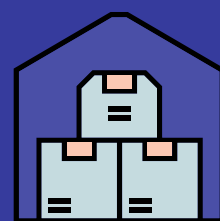
On-site team



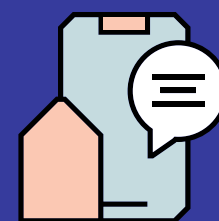
Pets welcome



On-site maintenance



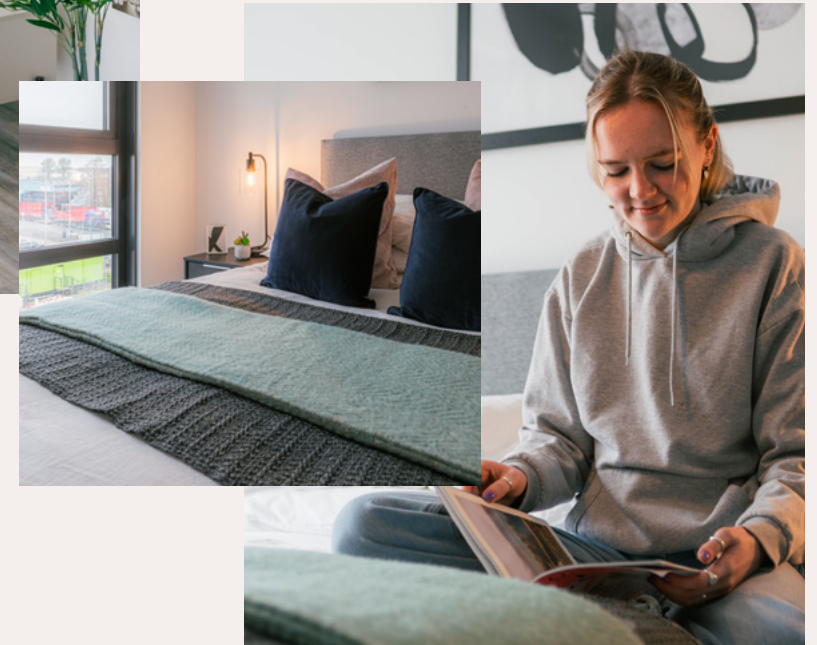
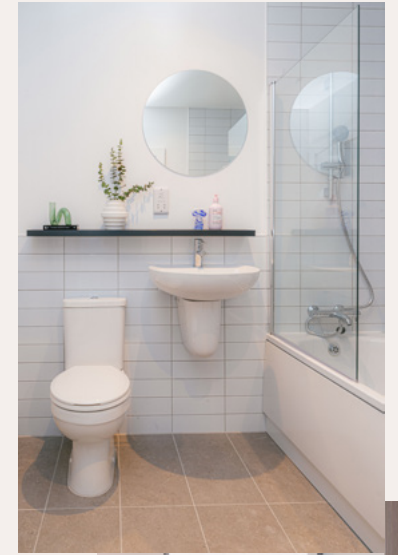
Parcel room



Lifestyle app



Supermarket
(coming 2025)



CHOOSE YOUR APARTMENT SPECIFICATIONS AND PLANS

All rentals at Millers Quay come with high specification sanitary ware and appliances as standard - it's just what we do. Our belief in delivering the highest possible quality homes covers every aspect of the build, right down to taps, tiles and toilets.

Living Room

- Furnished or unfurnished
- Contemporary design
- Open plan living and kitchen area
- Full height glazing
- High speed broadband
- Some apartments with large balconies

Furnished apartments include: sofa, lounge chair, dining table and chairs, floor finishes and window blinds

Kitchen

- Handle-less units
- Hob and slimline extractor
- Integrated fridge freezer
- Integrated oven
- Integrated dishwasher
- Worktop and splashback
- Chrome monobloc kitchen tap with stainless steel sink

Bedroom

- Furnished or unfurnished
- Contemporary design
- 1 & 2 bedroom configurations

2 bedroom apartments have 2 bathrooms

Furnished apartments include: beds, carpets, bedside tables and blinds

Bathroom

- White ceramic sanitary ware
- Shower over bath
- Chrome taps and fittings
- Tiled walls in bath and shower area
- Ceramic floor tiles
- Heated towel rail
- Mirror and shelf

Lighting

LED/low energy lighting throughout

Controls

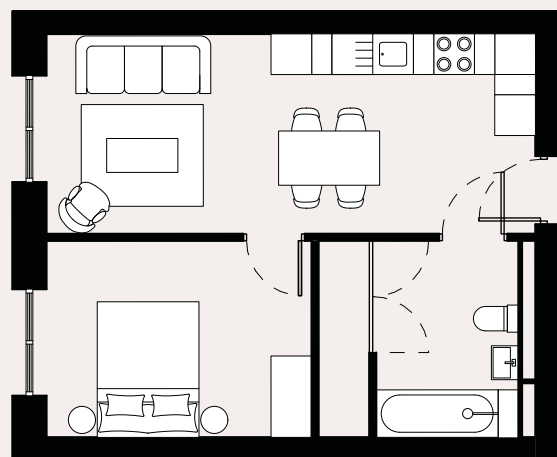
Heating and hot water controlled by Lightwave RF integrated system

Media

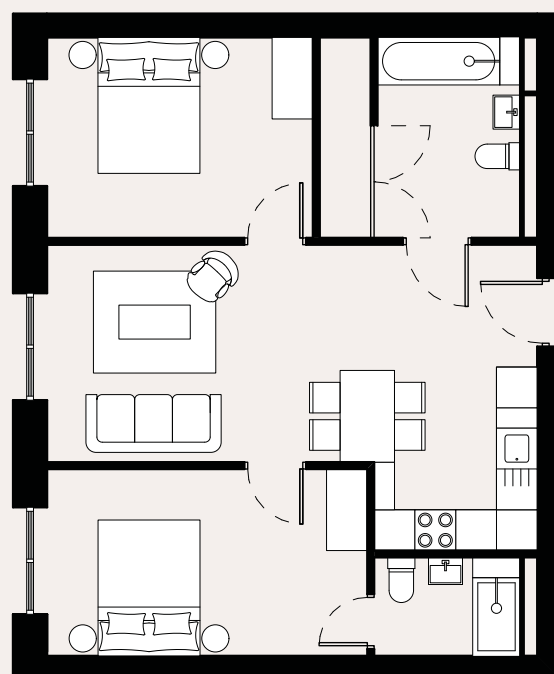
Broadband connection facilities and satellite points (usual customer subscriptions apply)

Other services

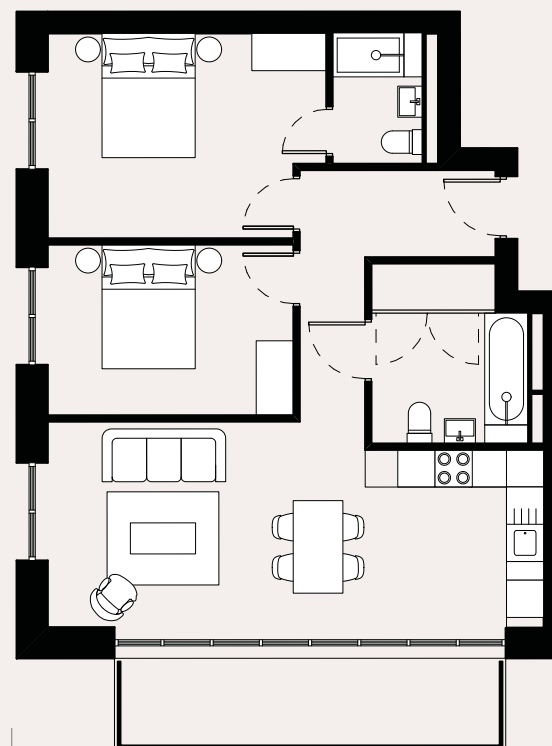
Dedicated space for washing machine with plumbing



One bedroom apartment

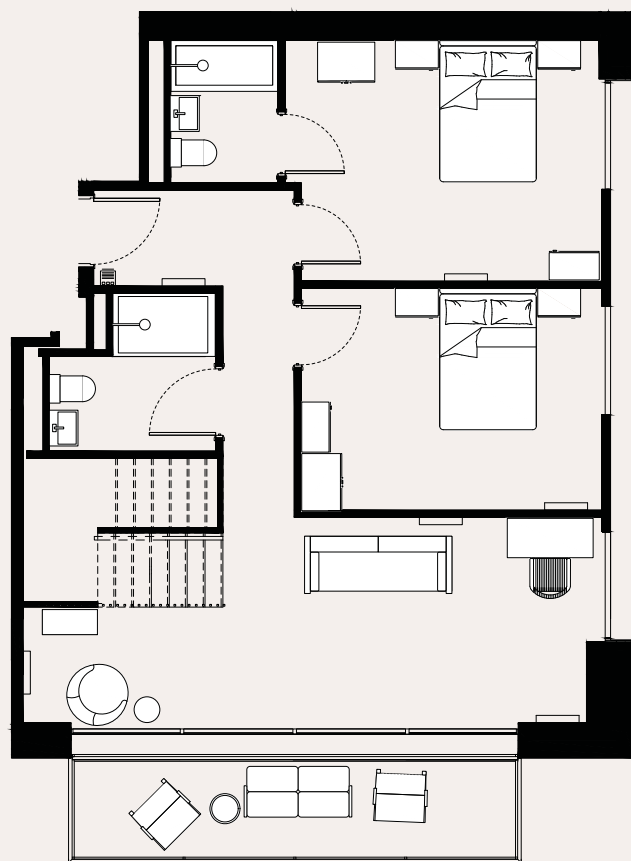


Two bedroom apartment

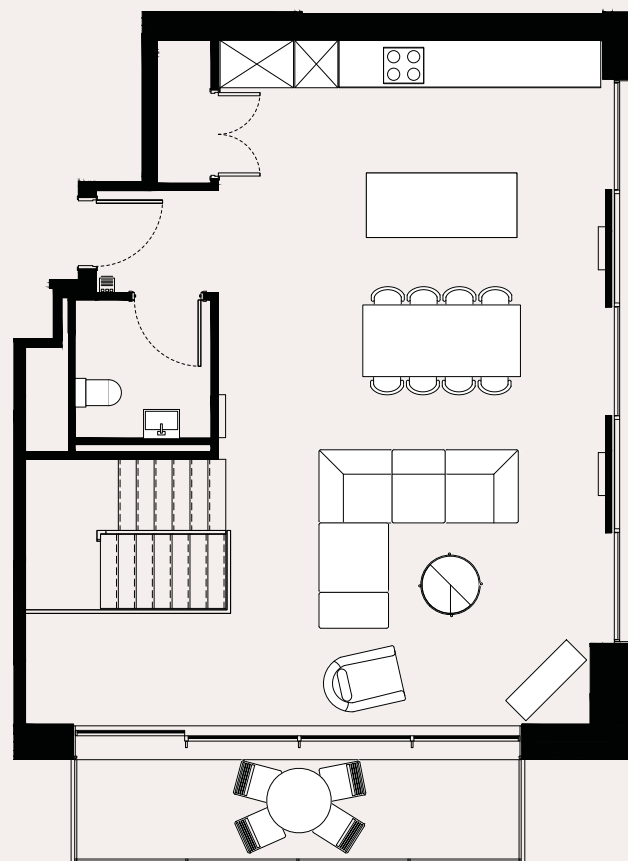


Two bedroom apartment with balcony

DUPLEX APARTMENT SPECIFICATIONS AND PLANS



Duplex lower floor



Duplex upper floor

Living Room

- Furnished or unfurnished
- Contemporary design
- Open plan living and kitchen area
- Full height glazing
- High speed broadband
- Some apartments with large balconies

Furnished apartments include: sofa, lounge chair, dining table and chairs, floor finishes and window blinds

Kitchen

- Handle-less units
- Hob and slimline extractor
- Integrated fridge freezer
- Integrated oven
- Integrated dishwasher
- Worktop and splashback
- Chrome monobloc kitchen tap with stainless steel sink

Bedroom

- Furnished or unfurnished
- Contemporary design
- 1 & 2 bedroom configurations
- 2 bedroom apartments have 2 bathrooms
- Furnished apartments include: beds, carpets, bedside tables and blinds

Bathroom

- White ceramic sanitary ware
- Shower over bath
- Chrome taps and fittings
- Tiled walls in bath and shower area
- Ceramic floor tiles
- Heated towel rail
- Mirror and shelf

Lighting

- LED/low energy lighting throughout

Controls

- Heating and hot water controlled by Lightwave RF integrated system

Media

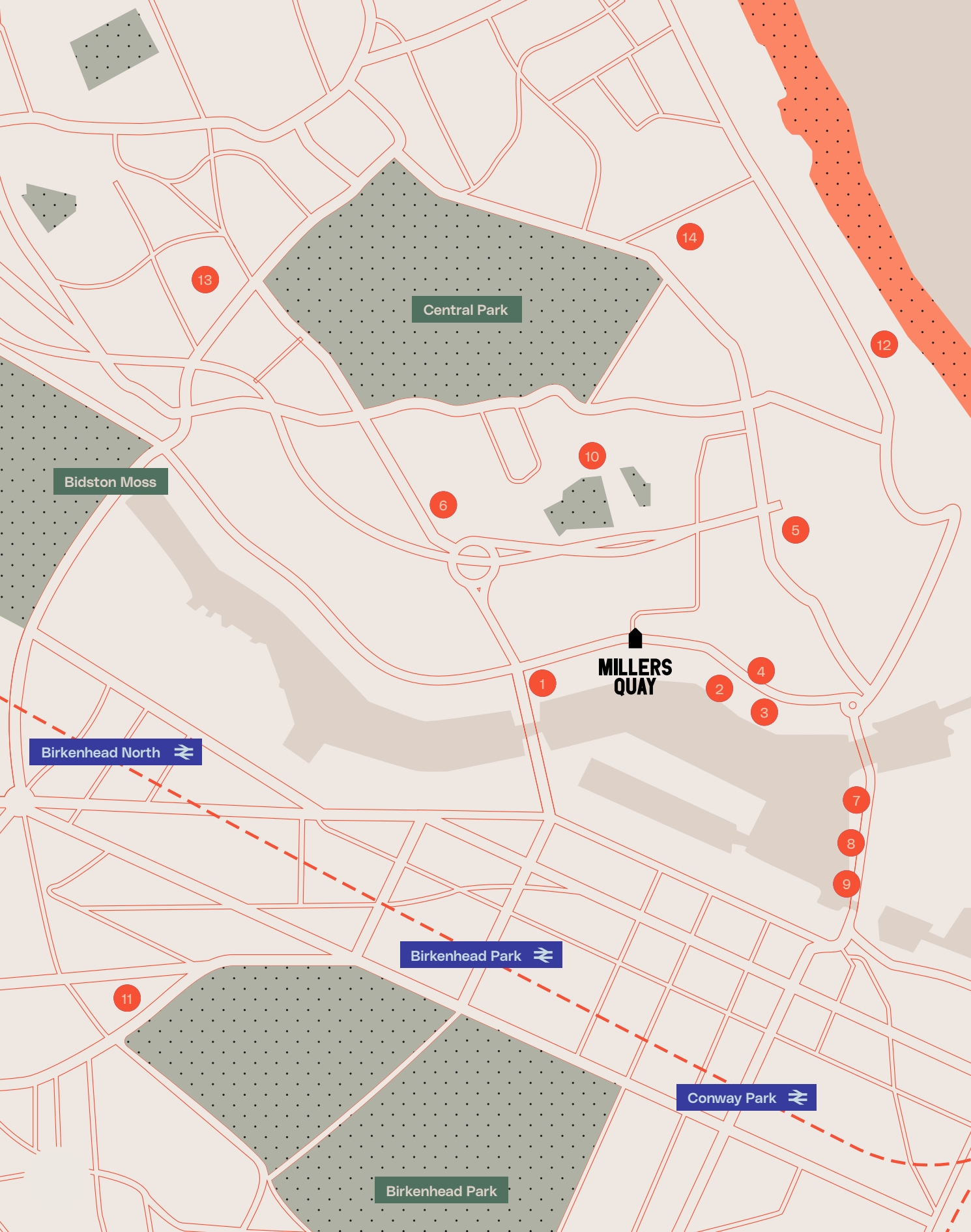
- Broadband connection facilities and satellite points (usual customer subscriptions apply)

Other services

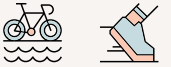
- Dedicated space for washing machine with plumbing

**YOU'VE GOT THINGS
TO DO, PLACES TO BE,
LOTS TO FIT IN.**

GET TO KNOW YOUR LOCAL NEIGHBOURHOOD




Wirral Waters



1	Supermarket (coming 2025)	1min	2min
2	Eastfloat Quay Apartments	1min	5min
3	Redbridge Quay Homes / Pocket Park	1min	7min
4	Foodhall (coming soon)	1min	7min
5	Post Office	3min	11min
6	Medical Centre	4min	14min
7	Wirral Met College Construction Campus	4min	17min
8	Hythe	4min	17min
9	Egerton Village (coming soon)	4min	17min
10	Brentwood Nursery	4min	17min
●	Birkenhead Park Station	5min	18min
11	Aldi Supermarket	7min	25min
●	Birkenhead Park	7min	25min
●	Bidston Moss	7min	28min
12	Riverside Primary School	8min	20min
●	Conway Park Station	8min	31min
●	Birkenhead North Station	8min	34min
13	Victoria Central Hospital	9min	28min
14	Egermont Primary School	10min	26min
●	Central Park	10min	26min

GET TO KNOW YOUR LOCAL NEIGHBOURHOOD

Oxton Village

 8 min  8 min

- 1 Williamson Art Gallery
- 2 Callister Gardens
- 3 Home Coffee

- 4 Low Slow & Dough
- 5 Bon Bakery
- 6 The Queens Arms

New Brighton

 11 min  18 min

- 7 New Brighton Beach
- 8 Floral Pavilion Theatre
- 9 Vale Park

- 10 Riverside Bowling
- 11 The James Atherton
- 12 Driftwood Cafe

Birkenhead Central

 6 min  12 min

- 13 Birkenhead Priory
- 14 Future Yard CIC
- 15 The Rock Retail Park

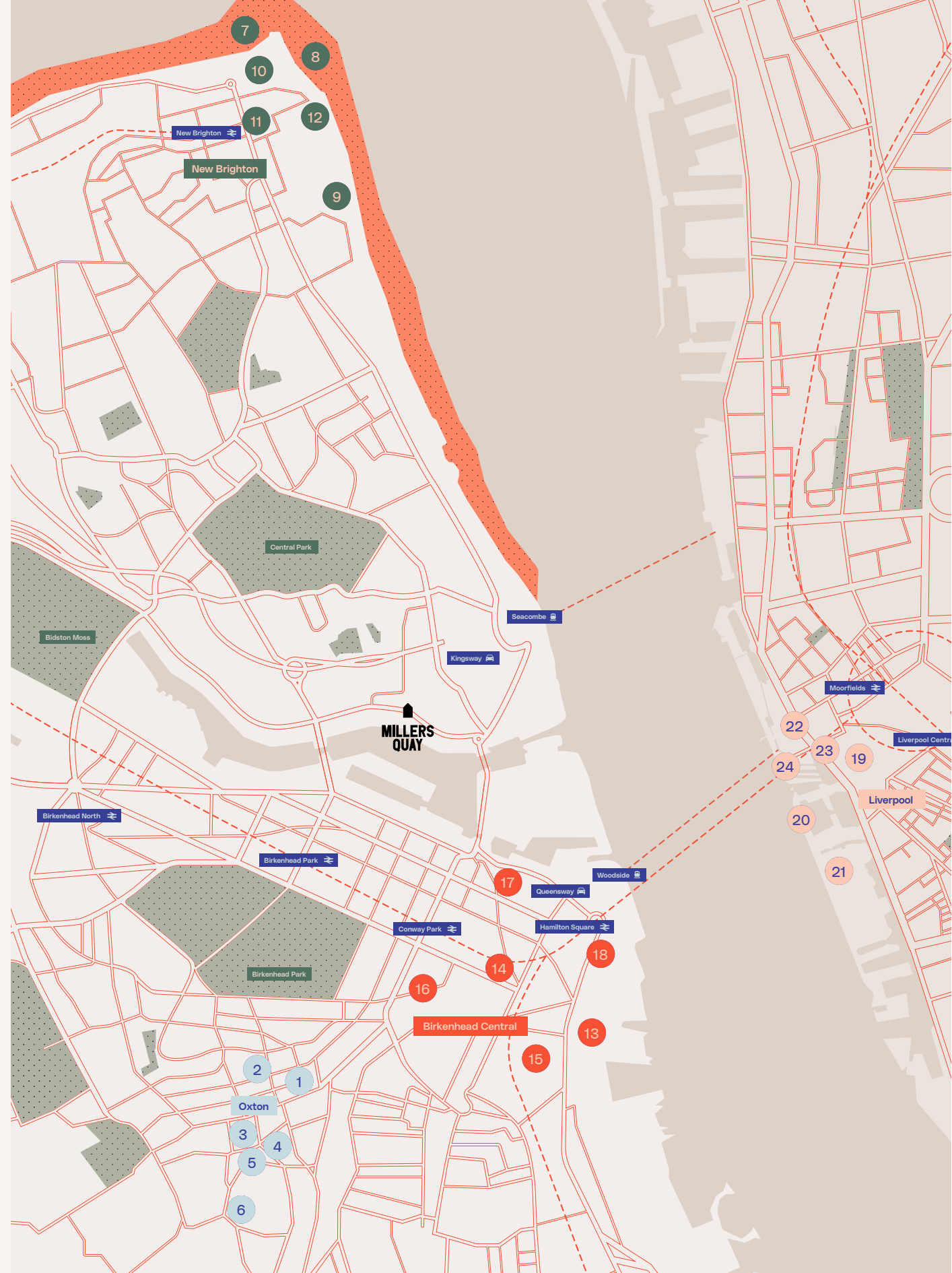
- 16 Pyramids Shopping Centre
- 17 Wirral Transport Museum
- 18 Woodside Cinema

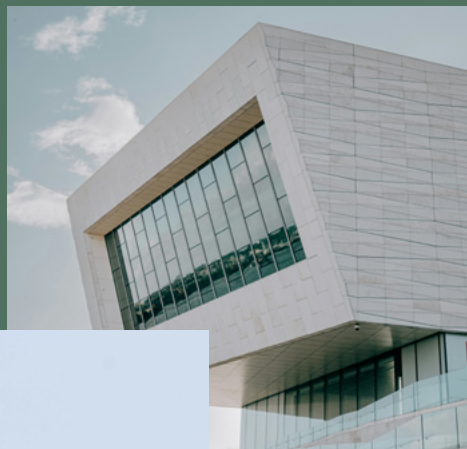
Liverpool City Centre

 11 min  30 min

- 19 Liverpool ONE
- 20 Royal Albert Dock
- 21 M&S Bank Arena

- 22 The Three Graces
- 23 TATE Liverpool
- 24 Museum of Liverpool





Liverpool One

There's so much to discover at the heart of Liverpool City centre. Liverpool One is the ideal location for those busy bodies, with over 170 stores, restaurants, bars and all sorts of entertainment too.

Royal Albert Dock

A former icon of the Victorian era, Royal Albert Dock has a rich variety of retail and leisure offerings. The dock plays a central role in the city's cultural life too – home to the Maritime Museum and Tate Liverpool.

M&S Bank Arena

Liverpool loves putting on a show! M&S Bank Arena is one of the the most prestigious venues in the UK, bringing some of the biggest stars in live music, comedy and sport to the city.

A STONE'S THROW ACROSS THE MERSEY



The Three Graces

The Royal Liver Building, Cunard Building and Port of Liverpool Building define the beautiful and iconic waterfront skyline. Built in the early 1900s, the buildings haven't lost their charm, a must visit any time of year.

Mathew Street

Famously known for the Cavern Club, a venue synonymous with The Beatles, Mathew Street is now celebrated with a huge annual festival takeover. The much anticipated street party spans four days and shouldn't be missed.

Museum of Liverpool

If the museum's striking modern architecture isn't inviting enough, the free entry should be. Dive into the story of Liverpool and its people, celebrating the city's genesis and evolution.



Homebrew, Oxton Village

Situated in a lovely spot in Oxton Village, Homebrew is an independent craft beer store. Next door you'll find it's popular bar, where you can enjoy local and international hard-to-find beers, wine and spirits.



Parkgate

The historic promenade is now filled with thriving independent cafes, restaurants and bars. Grab a famous ice cream from Nicholls Ice Cream of Parkgate, which has been enjoyed sweet-toothed visitors for over 75 years and glorious views across to Wales.

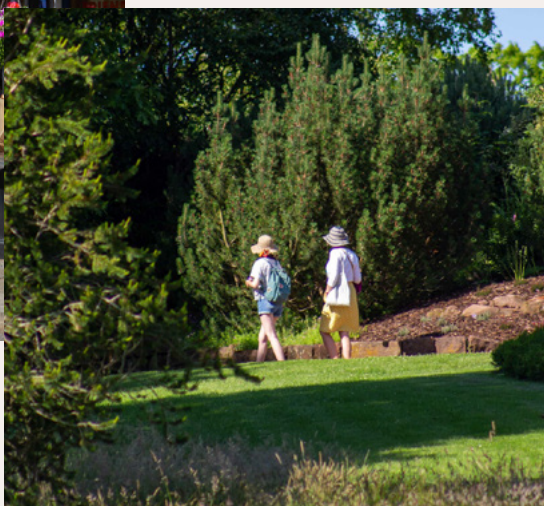
Lady Lever Art Gallery

Regarded as one of the finest art galleries in Europe, Lady Lever Art Gallery is at the heart of Port Sunlight. Enjoy the internationally renowned rich collections of painting, sculpture, furniture, ceramics and textiles.



THE PERFECT BACKDROP FOR EXPLORATION AND DISCOVERY

www.visitwirral.com



Ness Gardens

Boasting sixty four stunning acres of green space and bursting with life, Ness Botanical Gardens is a place for everyone. Events, fantastic views and family activities from star gazing to trails and crafts make a perfect day out.

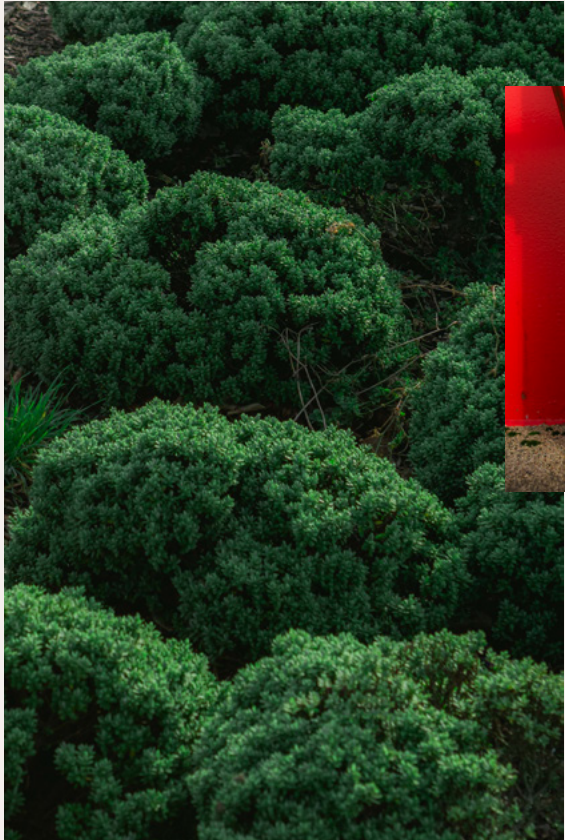
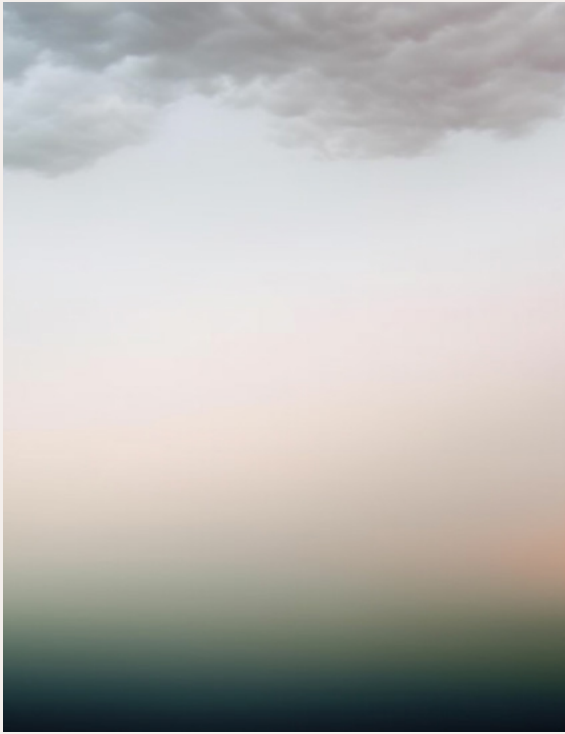
Hilbre Island

A stunning, wild location to explore at low tide – Hilbre Island, situated at the mouth of the River Dee, is a fantastic place to catch sight of rare water birds, waders and the occasional grey seal in the summer months.

Woodside Ferry Village, Birkenhead

Located in the heart of Birkenhead's waterfront, this foodie attraction is well worth investigating. Serving up interesting platefuls to enjoy while you take in the spectacular views across the River Mersey. Simply stunning at sunset!

**WATERSIDE LIFE.
BIG SKIES.
ELEMENTAL WEATHER.
SPACE TO BREATHE.**





For more information please call, email or visit our website

millers.quay@jll.com

0151 452 3090

millers-quay.co.uk

Stay connected



millersquay

The contents of this brochure are provided for general information only and so not constitute any offer or contract. Peel L&P Legacy (Wirral Waters) Limited and its parent company Peel L&P Holdings (Uk) Limited ("Peel") make no representations, warranties or guarantees, whether express or implied, that the contents are accurate, complete or up to date. Millers Quay CGI's courtesy of Howells Architects and Uniform. Images, descriptions and measurements of apartments, buildings and the development are for illustrative purposes only and may not reflect the final design, layout, features, furniture or materials used. They should not be relied on as a statement of fact. No warranty is given as to the condition of the property or condition or operation of any plant or machinery, fixtures or fittings. When making decisions, such as financial decisions or whether to sign up to a tenancy agreement, you should not rely only on the content of this brochure, and you should seek necessary professional advice. The contents of this brochure should not be taken as being any form of financial, legal or other advice or recommendations. Peel's liability for non-fraudulent misrepresentation is excluded to the fullest extent permitted by law.




**MILLERS
QUAY**

Homes to Rent
Dock Road, Birkenhead, CH41 1EY

