



163A UPPER STREET

LONDON, N1 1US

£650,000
LEASEHOLD

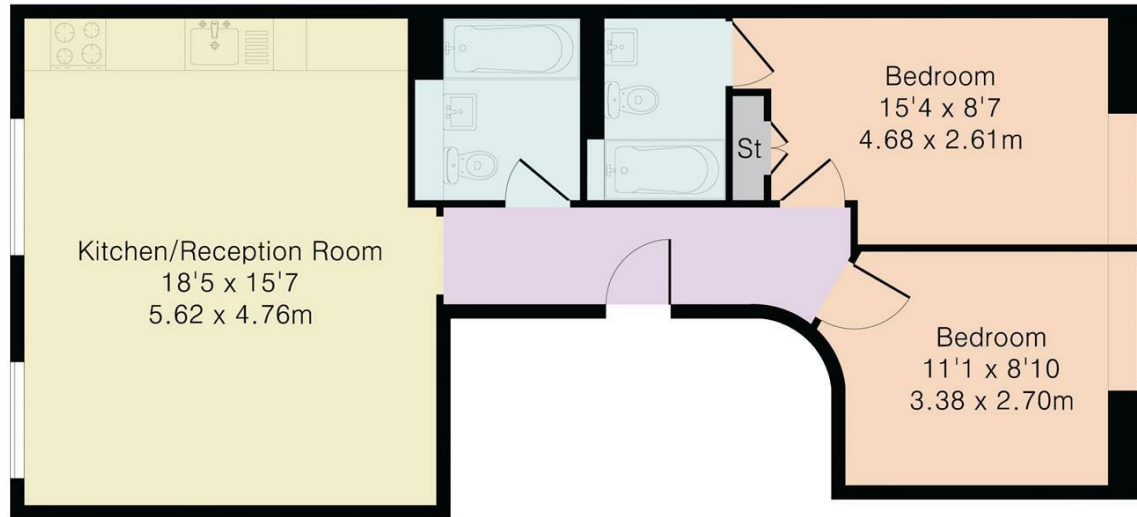
A bright and spacious two-bedroom apartment in the heart of Islington's vibrant Upper Street.

Boasting high ceilings and an airy feel throughout, this well-presented home features a generous open-plan kitchen and reception area with large windows, built-in appliances, and ample natural light. Both double bedrooms offer built-in storage, providing practicality alongside comfort.

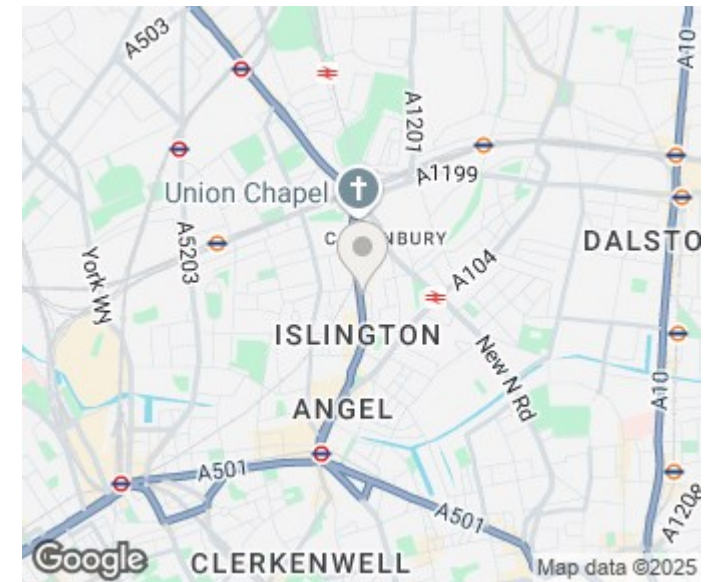
Perfectly positioned between Highbury & Islington and Angel underground stations, the property benefits from excellent transport links via tube, overground, and bus routes—all within easy walking distance. Residents will also enjoy immediate access to Upper Street's array of restaurants, cafés, and boutique shops, making this an ideal home for those seeking both convenience and style.

NH NobleHouse
services

Approximate Gross Internal Area 654 sq ft - 61 sq m



Second Floor



Energy Efficiency Rating		
	Current	Potential
Very energy efficient - lower running costs		
(92 plus) A		
(81-91) B		
(69-80) C		
(55-68) D		
(39-54) E		
(21-38) F		
(1-20) G		
Not energy efficient - higher running costs		
England & Wales	EU Directive 2002/91/EC	

78

83

Agents Note: Whilst every care has been taken to prepare these particulars, they are for guidance purposes only. All measurements are approximate and are for general guidance purposes only and whilst every care has been taken to ensure their accuracy, they should not be relied upon and potential buyers/tenants are advised to recheck the measurements

Noble House Services - Lettings
5 Paper Mill Buildings, City Garden Row,
Islington
London
N1 8DW

02076 891000
enquiries@nh-services.co.uk
www.nh-services.co.uk

NH NobleHouse
services