



FLAT 7 VINNY COURT 926 HIGH ROAD

LONDON, N12 9RW

£270,000
FREEHOLD

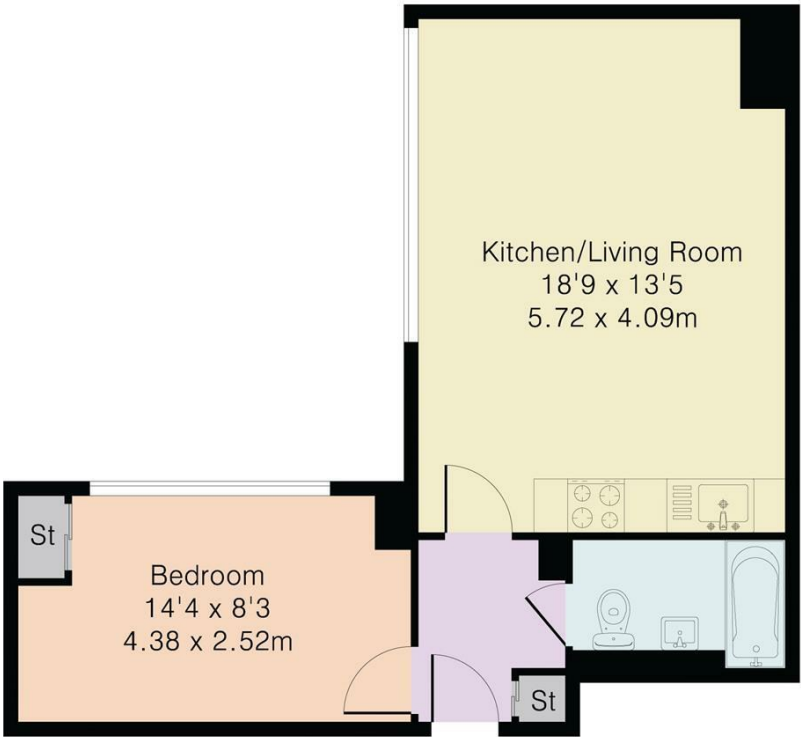
LAST UNITS REMAINING! A charming one-bedroom apartment in the heart of North Finchley, N12. The property offers a spacious bedroom with a fitted wardrobe, open-plan kitchen/living room and a modern bathroom.

The development offers lift access and beautifully decorated communal areas with LED and wood panel features offering a contemporary feel throughout.

Available for vacant possession, this property boasts a prime location within walking distance of Woodside Park Underground Station, ensuring quick and easy access to central London and beyond. Additionally, it's just a short stroll to North Finchley High Road, where you'll find a variety of shops, cafes, and amenities that cater to everyday needs.

NH NobleHouse
services

Approximate Gross Internal Area 450 sq ft – 42 sq m



Energy Efficiency Rating		
	Current	Potential
Very energy efficient - lower running costs		
(92 plus) A		
(81-91) B		
(69-80) C	68	68
(55-68) D		
(39-54) E		
(21-38) F		
(1-20) G		
Not energy efficient - higher running costs		
England & Wales	EU Directive 2002/91/EC	

Agents Note: Whilst every care has been taken to prepare these particulars, they are for guidance purposes only. All measurements are approximate and are for general guidance purposes only and whilst every care has been taken to ensure their accuracy, they should not be relied upon and potential buyers/tenants are advised to recheck the measurements

Noble House Services - Sales
5 Paper Mill Buildings, City Garden Row,
Islington
London
N1 8DW

02076 891000
enquiries@nh-services.co.uk
www.nh-services.co.uk

NH NobleHouse
services