



FLAT 33 VINNY COURT, 926 HIGH ROAD LONDON, N12 9RW

£350,000

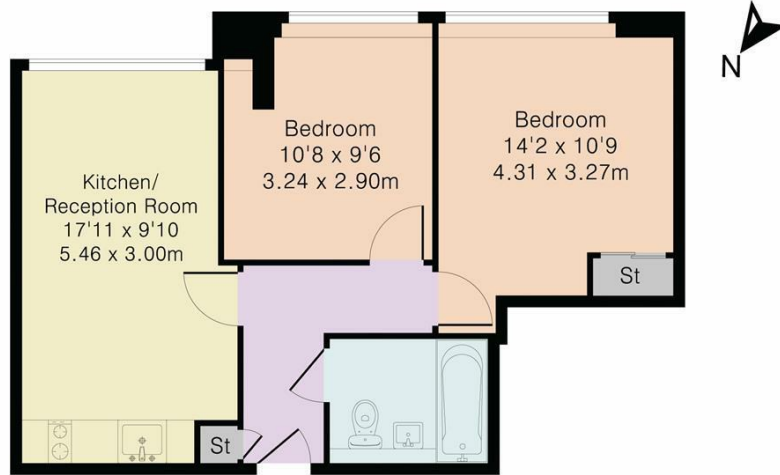
Discover the epitome of modern urban living in this exquisite two-bedroom apartment at Vinny Court. Step into a bright and spacious living area that welcomes natural light, creating an inviting ambiance for relaxation and entertainment. The sleek and contemporary kitchen reception area is thoughtfully designed, offering both style and functionality for culinary enthusiasts.

The property offers two generously sized double bedrooms, complete with built-in storage solutions to maximise space and organisation. A well-appointed bathroom provides a comfortable retreat for personal care and rejuvenation.

Vinny Court boasts not only luxurious living spaces but also convenient amenities. With lift access and beautifully adorned communal areas featuring LED and wood panel accents, the development exudes sophistication and contemporary charm.

NH NobleHouse
services

Approximate Gross Internal Area 513 sq ft – 48 sq m



Fifth Floor Flat



Energy Efficiency Rating		
	Current	Potential
Very energy efficient - lower running costs		
(92 plus) A		
(81-91) B		
(69-80) C	72	76
(55-68) D		
(39-54) E		
(21-38) F		
(1-20) G		
Not energy efficient - higher running costs		
England & Wales	EU Directive 2002/91/EC	



Although Pink Plan Ltd ensures the highest level of accuracy, measurements of doors, windows and rooms are approximate and no responsibility is taken for error, omission or misstatement. These plans are for representation purposes only as defined by RICS code of measuring practise. No guarantee is given on total square footage of the property within this plan. The figure icon is for initial guidance only and should not be relied on as a basis of valuation.

NOVA HAUS
LONDON

Agents Note: Whilst every care has been taken to prepare these particulars, they are for guidance purposes only. All measurements are approximate and are for general guidance purposes only and whilst every care has been taken to ensure their accuracy, they should not be relied upon and potential buyers/tenants are advised to recheck the measurements

Noble House Services - Lettings
Unit 1 25-26 Enford Street
London
W1H 1DG

02076 891000
enquiries@nh-services.co.uk
www.nh-services.co.uk

