



FLAT 21 VINNY COURT, 926 HIGH ROAD
LONDON, N12 9RW

£275,000
LEASEHOLD

A charming apartment located in the heart of North Finchley, London. This delightful property boasts a cosy kitchen reception room, one spacious bedroom with built-in wardrobe space and a modern bathroom.

Situated in the vibrant area of North Finchley, you'll have easy access to a variety of amenities including shops, restaurants, and parks. The location also offers excellent transport links, ensuring you can explore the rest of London with ease.

Don't miss out on the opportunity to make this apartment your new home. With its convenient location and comfortable living spaces, Vinny Court is the perfect place to create new memories and enjoy all that London has to offer.

Development is 50% Sold.

NH NobleHouse
services

FLAT 21 VINNY COURT, 926 HIGH

- Studio One Bedroom Apartment • Open Plan
 - Kitchen Reception • Vacant • Chain
 - Free • Fantastic Location • Video Phone
 - Entry • Council Tax Band D (Islington) • EPC
 - Rating C • Leasehold: 999 Years • Service Charge
- Est: £1,100 per annum



FLAT 21 VINNY COURT, 926 HIGH





FLAT 21 VINNY COURT, 926 HIGH

ADDITIONAL INFORMATION

Local Authority – Barnet

Council Tax – Band C

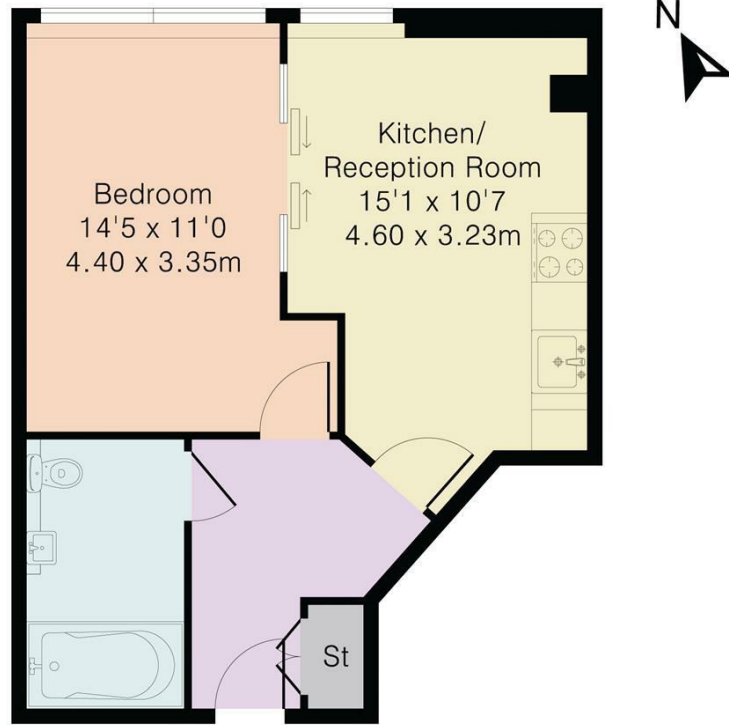
Viewings – By Appointment Only

Floor Area – 407.00 sq ft

Tenure – Leasehold



Approximate Gross Internal Area 420 sq ft – 39 sq m



Third Floor Flat



| Energy Efficiency Rating | | |
|---|-------------------------|-----------|
| | Current | Potential |
| Very energy efficient - lower running costs | | |
| (92 plus) A | | |
| (81-91) B | | |
| (69-80) C | 76 | 76 |
| (55-68) D | | |
| (39-54) E | | |
| (21-38) F | | |
| (1-20) G | | |
| Not energy efficient - higher running costs | | |
| England & Wales | EU Directive 2002/91/EC | |

Agents Note: Whilst every care has been taken to prepare these particulars, they are for guidance purposes only. All measurements are approximate and are for general guidance purposes only and whilst every care has been taken to ensure their accuracy, they should not be relied upon and potential buyers/tenants are advised to recheck the measurements

Noble House Services - Sales
 Unit 1 25-26 Enford Street
 London
 W1H 1DG

02076 891000
 enquiries@nh-services.co.uk
 www.nh-services.co.uk

