



FLAT A 163A UPPER STREET

LONDON, N1 1US

£725,000
LEASEHOLD

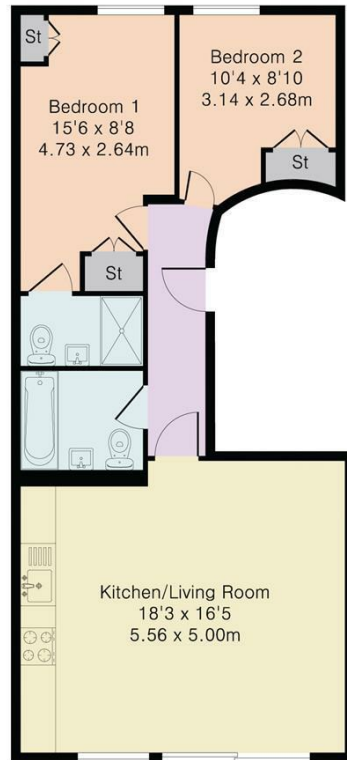
A bright and spacious two bedroom apartment, located on Islington's vibrant Upper Street.

Benefitting from high ceilings, a generous kitchen and reception area with large windows and built in appliances, two double bedrooms and built-in storage.

The property is conveniently located between Highbury & Islington and Angel underground stations, with excellent transport links via bus, tube and overground within short walking distance. The location also provides easy access to the numerous restaurants, cafes and other amenities of Upper Street.

NH NobleHouse
services

Approximate Gross Internal Area 631 sq ft – 59 sq m



First Floor



Energy Efficiency Rating		
	Current	Potential
Very energy efficient - lower running costs		
(92 plus) A		
(81-91) B	81	82
(69-80) C		
(55-68) D		
(39-54) E		
(21-38) F		
(1-20) G		
Not energy efficient - higher running costs		
England & Wales	EU Directive 2002/91/EC	

Agents Note: Whilst every care has been taken to prepare these particulars, they are for guidance purposes only. All measurements are approximate and are for general guidance purposes only and whilst every care has been taken to ensure their accuracy, they should not be relied upon and potential buyers/tenants are advised to recheck the measurements

Noble House Services - Sales
 Unit 1 25-26 Enford Street
 London
 W1H 1DG

02076 891000
 enquiries@nh-services.co.uk
 www.nh-services.co.uk

