



77 HOLLOWAY ROAD

LONDON, N7 8JZ

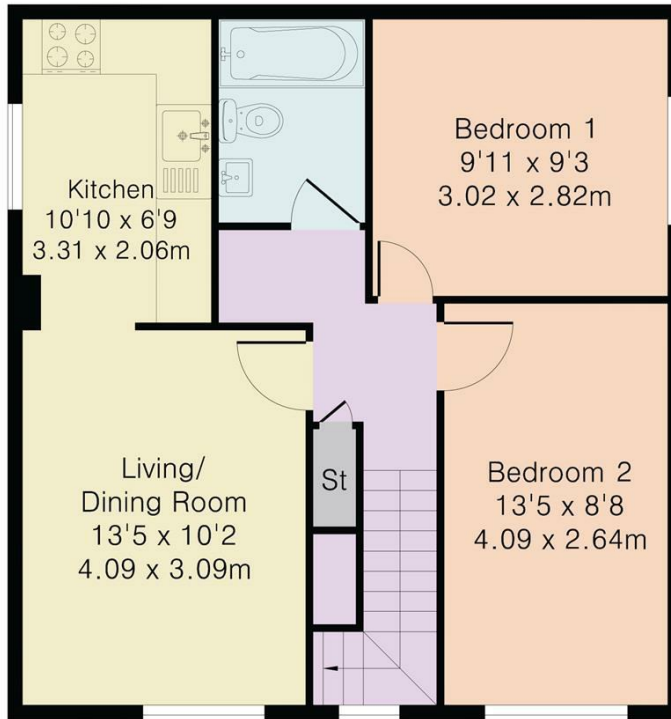
£550,000
LEASEHOLD

This second-floor flat, nestled within a period conversion, boasts a sleek modern interior, complete with recently fitted kitchen and bathroom. Positioned high up, it offers tranquility away from road noise and cleverly designed fitted wardrobes and units optimize the available space.

Conveniently located less than a 3-minute walk from Highbury & Islington tube station, providing access to the Victoria Line and Overground, this flat is surrounded by an abundance of shops and eateries. With Waitrose just across the street and the popular Zia Lucia nearby, residents have a wealth of amenities at their doorstep.

NH NobleHouse
services

Approximate Gross Internal Area 567 sq ft – 53 sq m



Second Floor



Energy Efficiency Rating		
	Current	Potential
Very energy efficient - lower running costs		
(92 plus) A		
(81-91) B		
(69-80) C		
(55-68) D		65
(39-54) E		
(21-38) F		
(1-20) G		
Not energy efficient - higher running costs		
England & Wales	EU Directive 2002/91/EC	

Agents Note: Whilst every care has been taken to prepare these particulars, they are for guidance purposes only. All measurements are approximate and are for general guidance purposes only and whilst every care has been taken to ensure their accuracy, they should not be relied upon and potential buyers/tenants are advised to recheck the measurements

Noble House Services - Sales
Unit 1 25-26 Enford Street
London
W1H 1DG

02076 891000
enquiries@nh-services.co.uk
www.nh-services.co.uk

