

Lugus
HOMES



Fitzroy House 6 Palmer Road, London, SW11 4GG

£9,000 Per month





£9,000 Per month

Fitzroy House 6 Palmer Road

London, SW11 4GG

- 1,532 Sq. ft of internal floorspace
- 3 ensuite bathrooms
- Fully furnished
- Resident access to the 1882 Club
- 24 hour concierge
- Three bedrooms
- Luxury specification
- Two balconies
- Underfloor heating and comfort cooling throughout
- 0.2 mile radius from Battersea Power Station

An exceptional three-bedroom apartment set on the fourth floor of a prestigious new development, offering 1,532 Sq. ft of luxurious lateral living space. This beautifully finished home features elegant parquet flooring, comfort cooling throughout, and an abundance of natural light.

The spacious open-plan living and kitchen area opens onto a private balcony overlooking tranquil communal gardens — perfect for entertaining or relaxing with friends. The stylish kitchen is fully integrated with high-spec appliances and sleek cabinetry.

The generous principal bedroom also enjoys garden views from its own balcony and boasts a luxurious en-suite with both a bath and walk-in shower. Two further double bedrooms, each with en-suite bathrooms, provide ample space for family or guests. A guest cloakroom and a well-appointed utility cupboard complete the layout.

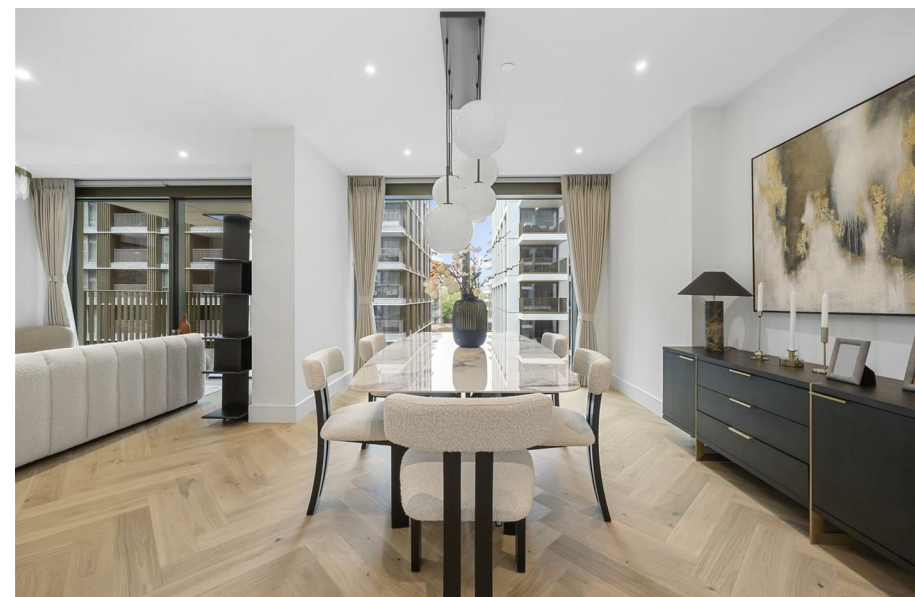
Fitzroy House is perfectly located in Zone 1 with all that Battersea has to offer, including one of London's finest parks, Battersea Park on the doorstep. There is quick access to the Northern Line Underground and Overground Stations (0.2 mile radius from the development) and easy access to Battersea Power Station, The River Thames, Chelsea and Sloane Square.

Further benefits include beautiful landscaped gardens, swimming pool, sauna and steam room. Residents have direct access to the 1882 Club where they can enjoy in the spoils of the 24th floor resident's bar and lounge whilst enjoying sweeping panoramic view across the Capital and Battersea Power Station. The facilities extend in providing flexible working spaces, cinema, karaoke room, screening room, music room and library can also be enjoyed.





[Directions](#)





Floor Plans



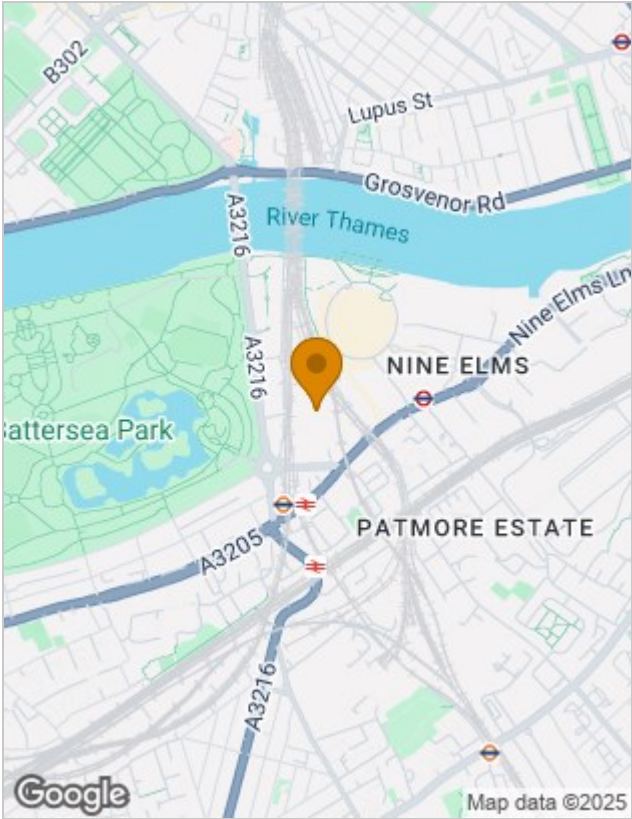
Viewing

Please contact our Lugas Homes Office on 07787 560885 if you wish to arrange a viewing appointment for this property or require further information.

The particulars are set out as a general outline only for the guidance of intended purchasers or lessees, and do not constitute, any part of a contract. Nothing in these particulars shall be deemed to be a statement that the property is in good structural condition or otherwise nor that any of the services, appliances, equipment or facilities are in good working order. Purchasers should satisfy themselves of this prior to purchasing.

24 Lower Downs Road, Raynes Park, London, SW20 8QG
Tel: 07787 560885 Email: info@lugushomes.co.uk lugushomes.co.uk

Location Map



Energy Performance Graph

