

Lugus HOMES



Nine Elms Lane, London

Asking price £899,999



This three-bedroom riverside apartment is situated within the prestigious Riverside Court development on the South Bank of the River Thames, offers excellent value for money given its generous size.

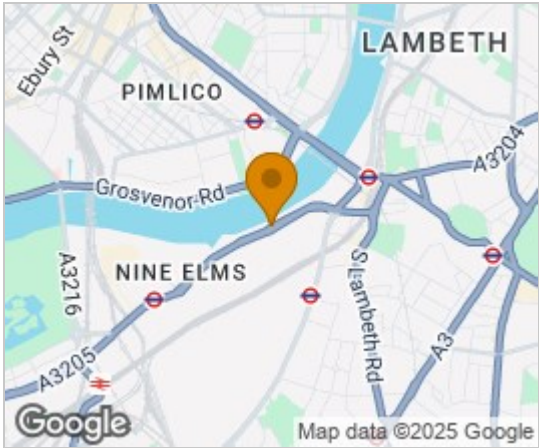
The property boasts approximately 1,164 sq. ft. of internal living space, comprising three double bedrooms with built-in wardrobes, two bathrooms, a fully equipped kitchen, and a spacious reception room with fantastic views of the River Thames.

Riverside Court is situated 0.4 mile radius from Vauxhall Station (Victoria Line and National Rail) and 0.5 mile radius to the Northern Line Stations at Nine Elms and Battersea Power Station, enabling quick access into Central London and the West End. Waitrose, Sainsburys and a number of independent cafés and bars all can be found within walking distance.

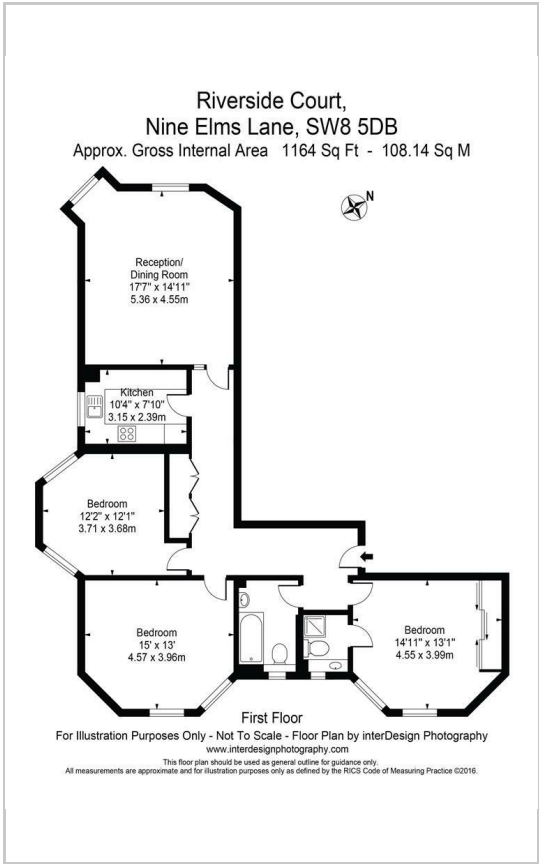
Further benefits include a gated car parking space, on-site porter service and heating and hot water is included in the service charges.



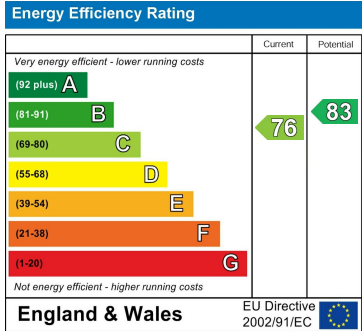
Area Map



Floor Plans



Energy Efficiency Graph



These particulars, whilst believed to be accurate are set out as a general outline only for guidance and do not constitute any part of an offer or contract. Intending purchasers should not rely on them as statements of representation of fact, but must satisfy themselves by inspection or otherwise as to their accuracy. No person in this firms employment has the authority to make or give any representation or warranty in respect of the property.