

# Lugus HOMES



## 5 Lockgate Road, Chelsea, London

£3,500 Per month



A stunning new two-bedroom two-bathroom apartment is a must see at Chelsea Creek.

Located on the fifth floor, the property benefits from 778 Sq. Ft of internal living space, offering a bright and spacious open plan kitchen and living room, making this property the perfect place to entertain and relax.

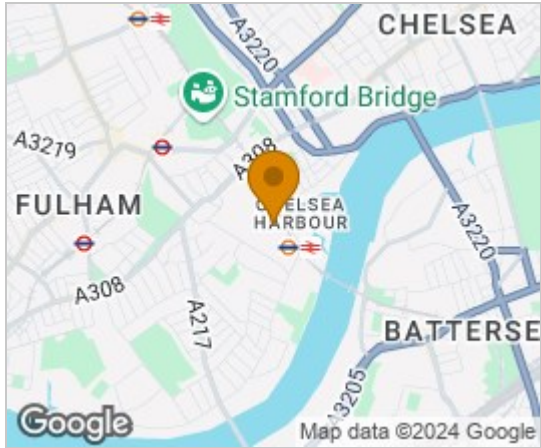
The apartment benefits from floor to ceiling windows, fully equipped and integrated Miele kitchen appliances, underfloor heating and air conditioning, private balcony, two double bedrooms with built in wardrobes, family bathroom and ensuite to the main bedroom.

Residents have access to the Halcyon Club where there are two cinemas, resident meetings rooms, roof top sky lounge, swimming pool, sauna, steam room and a gym.

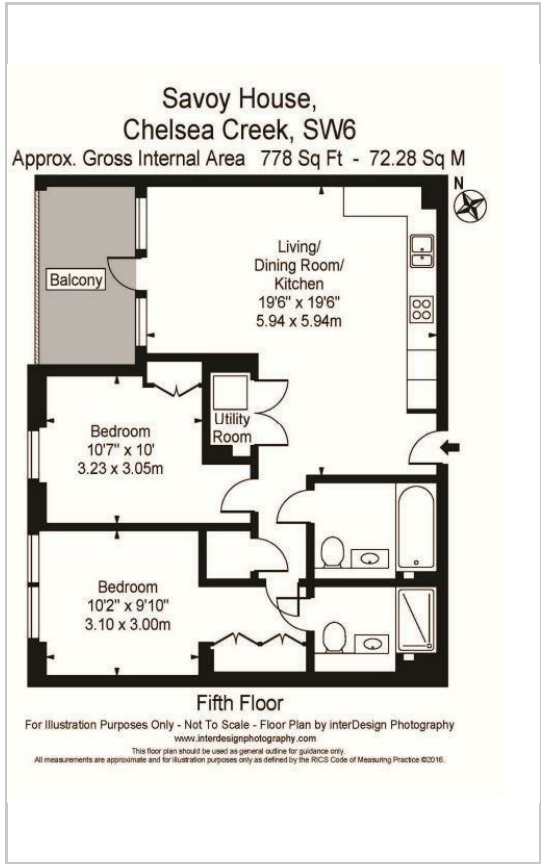
This property is rented unfurnished.



### Area Map



### Floor Plans



### Energy Efficiency Graph

Energy Efficiency Rating		
	Current	Potential
Very energy efficient - lower running costs		
(92 plus) <b>A</b>		
(81-91) <b>B</b>	<b>85</b>	<b>85</b>
(69-80) <b>C</b>		
(55-68) <b>D</b>		
(39-54) <b>E</b>		
(21-38) <b>F</b>		
(1-20) <b>G</b>		
Not energy efficient - higher running costs		
<b>England &amp; Wales</b>	EU Directive 2002/91/EC	

These particulars, whilst believed to be accurate are set out as a general outline only for guidance and do not constitute any part of an offer or contract. Intending purchasers should not rely on them as statements of representation of fact, but must satisfy themselves by inspection or otherwise as to their accuracy. No person in this firm's employment has the authority to make or give any representation or warranty in respect of the property.