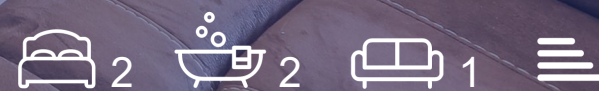


Lugus
HOMES



10 The Corniche Albert Embankment, London, SE1 7GG

£4,250 Per month





£4,250 Per month

10 The Corniche Albert Embankment

London, SE1 7GG

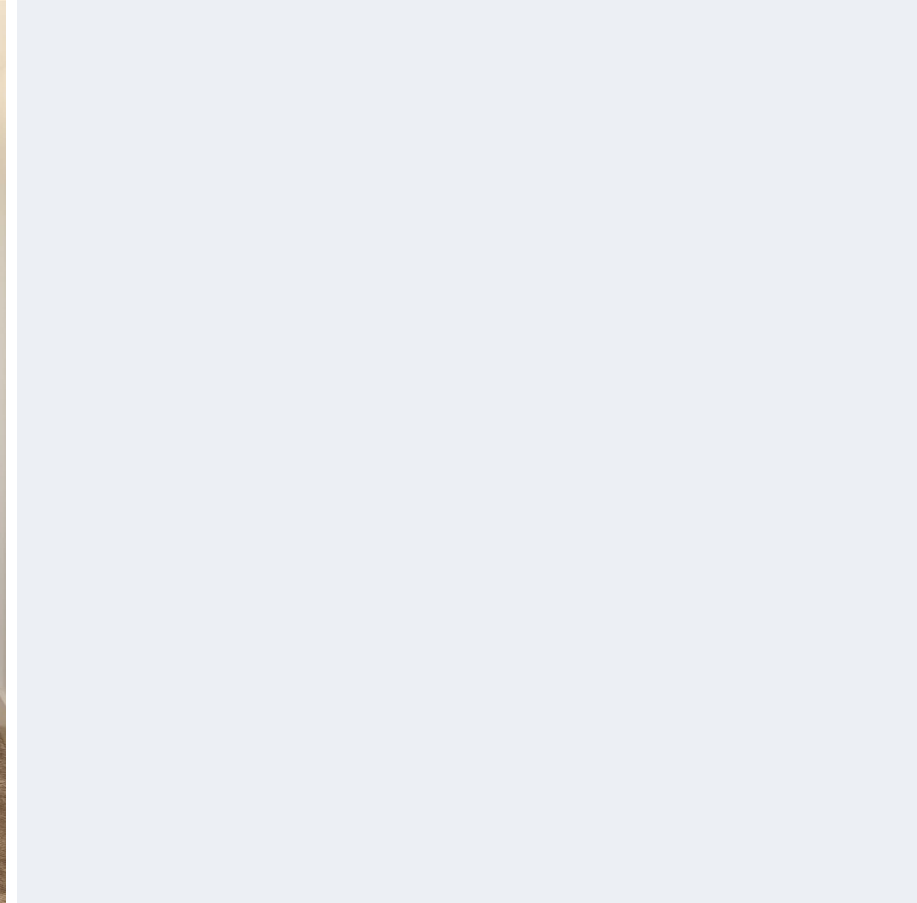
Located on the third floor, this two bedroom, two bathroom south east facing double aspect apartment benefits from approximately 907 sq. ft. of internal space.

The property has a large lateral open plan kitchen and reception room which leads onto a private curved terrace. The kitchen is fully integrated and has all the luxury mod cons. The primary bedroom is spacious and has built in wardrobes and benefits from an ensuite bathroom whilst the second bedroom is a good size room and has built in wardrobes.

Residents at the Corniche can enjoy the luxury facilities including a 24 hour concierge, resident's gym, pool, bowling alley, cinema room, communal roof terrace and a resident bar with views of Westminster and The River Thames.

The property comes fully furnished.



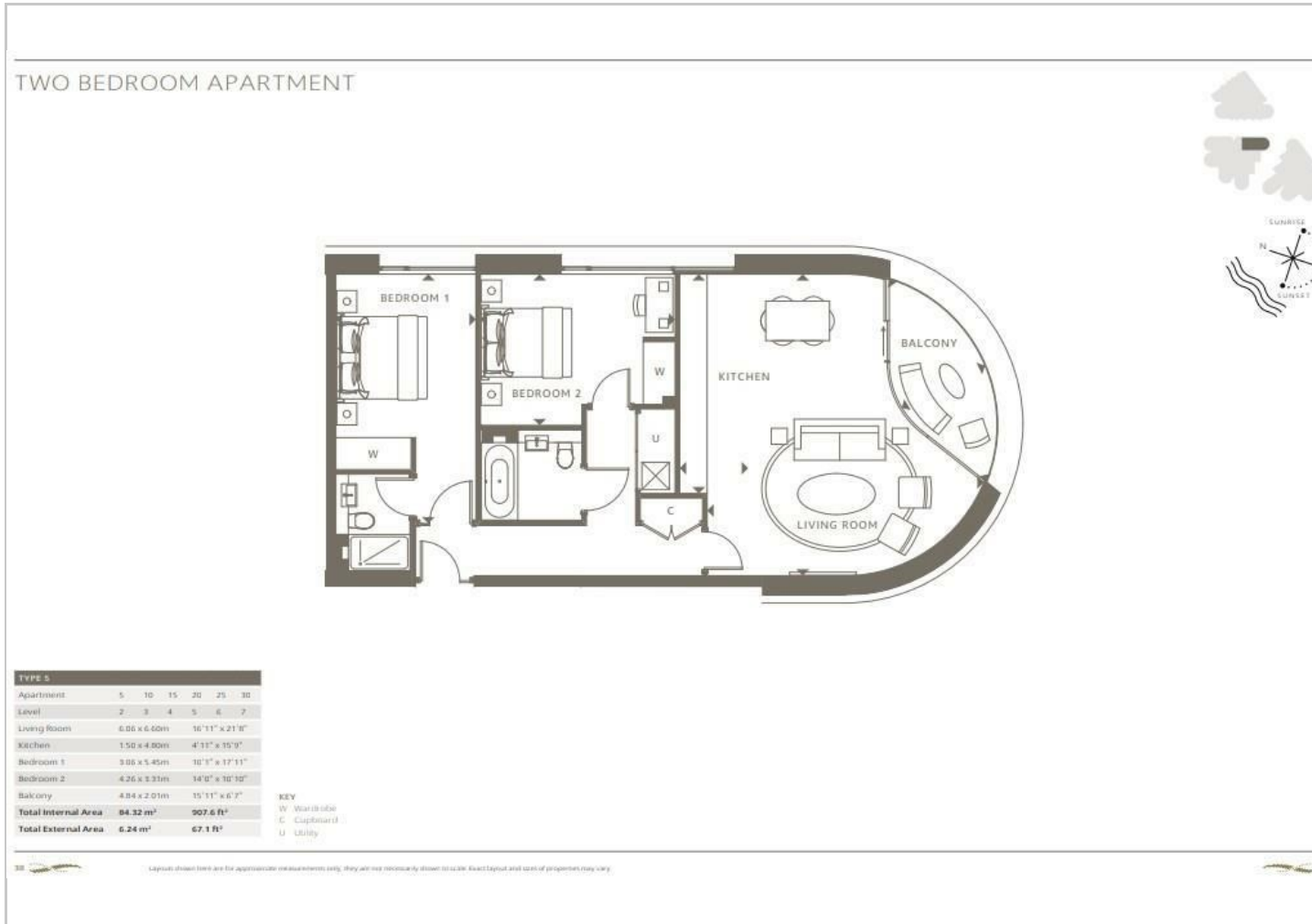


Directions





Floor Plans



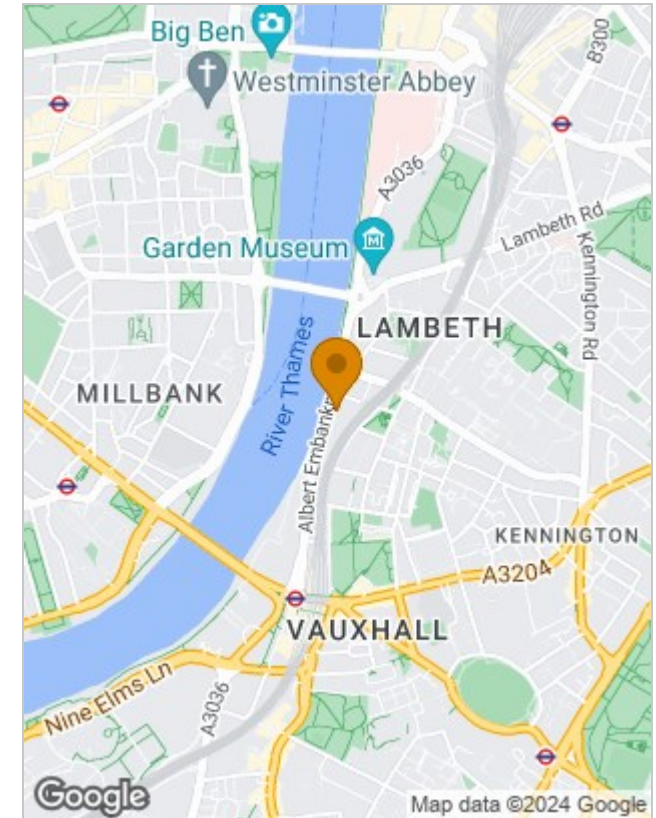
Viewing

Please contact our Lugas Homes Office on 07787 560885 if you wish to arrange a viewing appointment for this property or require further information.

The particulars are set out as a general outline only for the guidance of intended purchasers or lessees, and do not constitute, any part of a contract. Nothing in these particulars shall be deemed to be a statement that the property is in good structural condition or otherwise nor that any of the services, appliances, equipment or facilities are in good working order. Purchasers should satisfy themselves of this prior to purchasing.

24 Lower Downs Road, Raynes Park, London, SW20 8QG
Tel: 07787 560885 Email: info@lugushomes.co.uk lugushomes.co.uk

Location Map



Energy Performance Graph

