

THE ESTATE AGENTS
1977



Parracombe Way, Northampton NN3 3ND
Offers Over £280,000 - Freehold



PROPERTY DESCRIPTION

The Estate Agents are pleased to present this extended, three bedroom semi-detached property occupying a generous plot in the highly desirable area of Abington Vale. The accommodation briefly comprises: a porch leading to a spacious and welcoming entrance hall, open plan living/dining room, kitchen, breakfast room, home office/store and cloakroom. On the first floor are three bedrooms and family bathroom. Outside the property benefits from front and rear gardens, off road parking an EV charging point and garage.

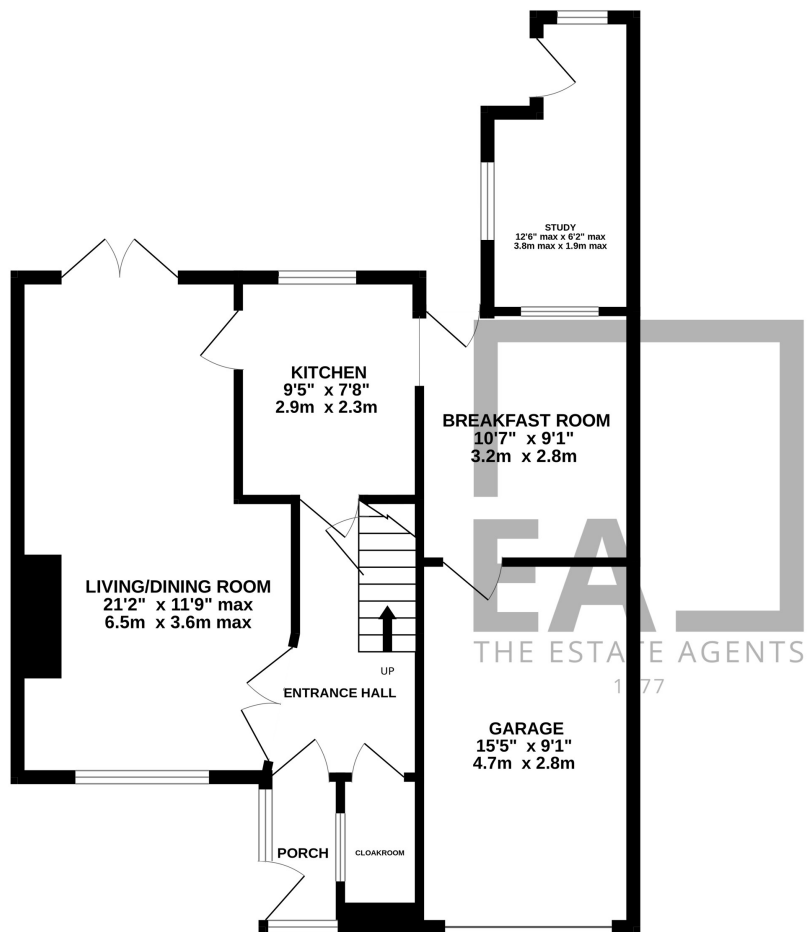
Abington Vale is a highly desirable area close to Abington Park, sought after primary and secondary schools and local amenities.

Northampton Town Centre, General Hospital and Train Station are all within easy reach and Abington Vale has fantastic road links with the A43/A45 and M1. Northampton has a regular sub-1 hour service to London Euston.

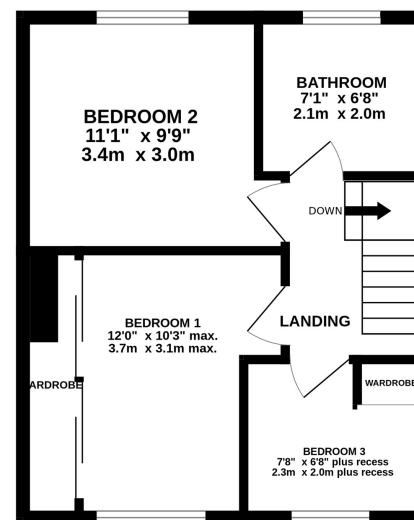
POINTS OF INTEREST

- Three Bedroom Semi-Detached
- Garage
- Off Road Parking
- Extended
- Cloakroom
- Open Plan Living /Dining Room
- Highly Desirable And Sought After Area Of Abington Vale

GROUND FLOOR
694 sq.ft. (64.5 sq.m.) approx.



1ST FLOOR
355 sq.ft. (33.0 sq.m.) approx.



TOTAL FLOOR AREA : 1049 sq.ft. (97.5 sq.m.) approx.

Whilst every attempt has been made to ensure the accuracy of the floorplan contained here, measurements of doors, windows, rooms and any other items are approximate and no responsibility is taken for any error, omission or mis-statement. This plan is for illustrative purposes only and should be used as such by any prospective purchaser. The services, systems and appliances shown have not been tested and no guarantee as to their operability or efficiency can be given.
Made with Metropix ©2024