



THE ESTATE AGENTS
1977

**Grafton Villas, Blisworth,
Northampton, NN7 3DN**

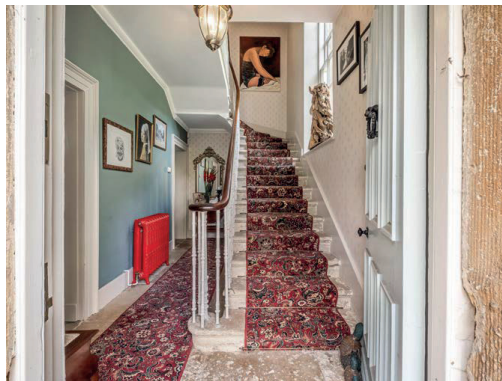
Grafton Villas

Northampton Road, Blisworth,
Northampton, NN7 3DN

The Estate Agents are excited to offer this rare opportunity of three highly rated holiday lets, and a beautiful four-bedroom family home in the highly desirable village of Blisworth.

Grafton Cottages holiday accommodation comprises; two studio apartments, tastefully converted from the original stable block, and a two-bedroom two storey cottage. The holiday lets enjoy plenty of repeat business with considerable scope to increase revenue. Vrbo, AirBnB and the current owner's website drive the business.

Equally as important in this proposition is Grafton Villa itself. This is a magnificent, semi-detached, four-bedroom, Grade II listed, Georgian house (c1837), which has also undergone a full renovation by the current owners, bringing modern day living to this characterful, period family home.





The plot extends to approx. 0.36 acres and provides secure off-road parking for several cars, catering easily for both family and paying guests. Planning has previously been granted (and architectural plans drawn up) for an additional bungalow, something the new owners may wish to reinstate for further income generation.



Blisworth village is a five-minute drive from the M1, boasts a supermarket/post-office/newsagent, a doctor's surgery, a local pub and The Walnut Tree Inn hotel & restaurant which was the original Blisworth Station Hotel. The property is perfectly situated just a five-minute walk from the Grand Union Canal, for visitors to enjoy everything Northamptonshire has to offer. This includes, but is not limited to, Silverstone race circuit, Central Milton Keynes, the market town of Towcester and many incredible stately homes.











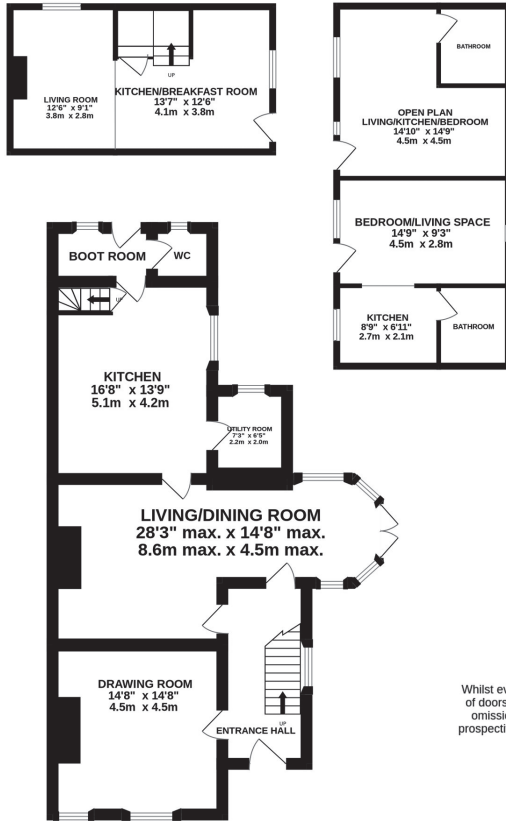
Northampton Town Centre and Train Station are just 4 miles away. Trains run regularly to both London and Birmingham, taking under an hour.

If you would welcome a change of lifestyle via a ready-made business with potential for growth then Grafton Villas is a must see.

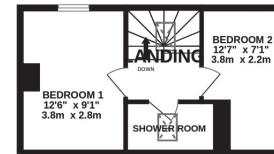
- Rarely Available Business Opportunity
- Stable Block Converted Into Two Studio Apartments
- Fully Refurbished Two Bedroom Cottage
- Four Bedroom Grade II Listed Georgian House
- Built In 1837
- Some Beautiful Stone Detailing And Many Original Features Throughout
- The Current Owners Have Undertaken A Complete Renovation Of The Entire Property, To Achieve High End, Contemporary Living.
- Highly Desirable And Sought After Village Of Blisworth
- En Suite Facilities To Two Bedrooms
- Available Immediately



GROUND FLOOR
1712 sq.ft. (159.0 sq.m.) approx.

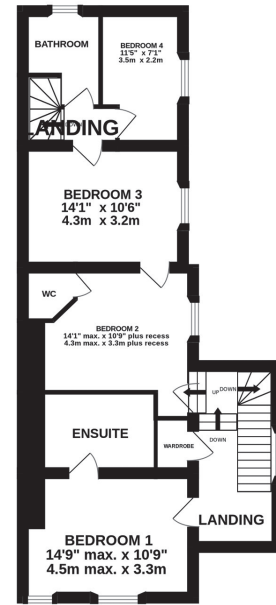


1ST FLOOR
1083 sq.ft. (100.6 sq.m.) approx.



TOTAL FLOOR AREA : 2794 sq.ft. (259.6 sq.m.) approx.

Whilst every attempt has been made to ensure the accuracy of the floorplan contained here, measurements of doors, windows, rooms and any other items are approximate and no responsibility is taken for any error, omission or mis-statement. This plan is for illustrative purposes only and should be used as such by any prospective purchaser. The services, systems and appliances shown have not been tested and no guarantee as to their operability or efficiency can be given.
Made with Metropix ©2024







THE ESTATE AGENTS
1977



Suite 34, Burlington House, 369 Wellingborough Road, Northampton

www.TheEstateAgents.uk