



my ideal mortgage
Property Partners



1 Humber Avenue

Offers Over £450,000

4 3 2

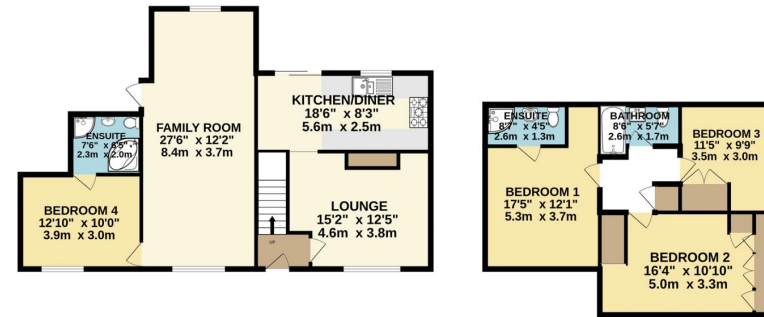


- FOUR BEDROOM SEMI DETACHED HOUSE
- SOUGHT AFTER LOCATION
- DOWNSTAIRS BEDROOM WITH EN SUITE
- HIGH SPEC FITTED KITCHEN
- UPVC DOUBLE GLAZED WINDOWS
- OFF STREET PARKING
- EN SUITE TO MASTER BEDROOM
- CATCHMENT AREA FOR DILKES PRIMARY ACADEMY SCHOOL
- WALKING DISTANCE TO HIGH STREET
- GAS CENTRAL HEATING





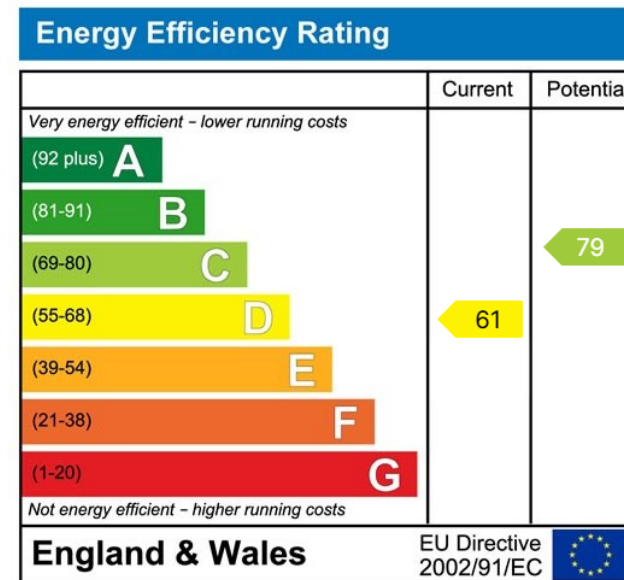
GROUND FLOOR
1452 sq.ft. (134.9 sq.m.) approx.



TOTAL FLOOR AREA - 1452 sq.ft. (134.9 sq.m.) approx.

Whilst every attempt has been made to ensure the accuracy of the floorplan contained here, measurements of doors, windows, rooms and any other items are approximate and no responsibility is taken for any error, omission or misstatement. This plan is for illustrative purposes only and should be used as such by any prospective purchaser. The services, systems and appliances shown have not been tested and no guarantee as to their operability or efficiency can be given.
Made with Metropac ©2024

LOCATION OF DREAMS - SUPERB PROPERTY IN THE HIGHLY POPULAR HUMBER AVENUE. This wonderful house is the epitome of family living, off street parking for several cars, en-suite to master bedroom, two reception rooms, downstairs bedroom and bathroom, south facing rear garden, and so much more. Do not miss your chance to view this amazing home, call Zoe to book your viewing.



Address: 18 Derwent Parade, South Ockendon, RM15 5EE

Phone: 01708 203 232

Email: zoew@myidealmortgage.co.uk