





**114 Araglen Avenue,**  
Guide Price £350,000 - £375,000

3 1 1



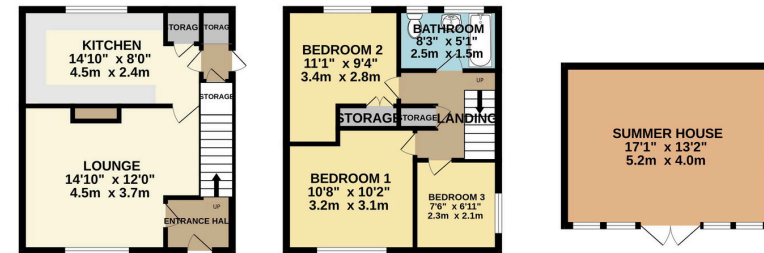


- End of Terraced House
- Front Garden with Off Street Parking Potential
- UPVC Double Glazed Windows
- Stones throw from local park and High Street
- Fitted Wardrobe Space
- South Facing Garden with Summer House
- Large Kitchen Space
- Walking distance to C2C train station Oyster Zone 6
- Gas Central Heating
- Walking distance to Primary and Secondary Schools



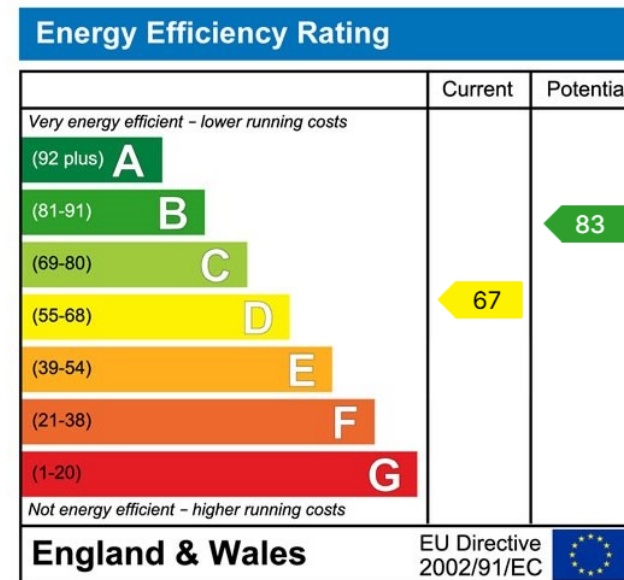


GROUND FLOOR  
923 sq.ft. (85.7 sq.m.) approx.



TWO/THREE BEDROOM END OF TERRACE HOUSE  
TOTAL FLOOR AREA : 923 sq.ft. (85.7 sq.m.) approx.  
Whilst every attempt has been made to ensure the accuracy of the floorplan contained here, measurements of doors, windows, rooms and any other items are approximate and no responsibility is taken for any error, omission or misstatement. This plan is for illustrative purposes only and should be used as such by any prospective purchaser. The services, systems and appliances shown here are not tested and no guarantee as to their operability or efficiency can be given.  
Made with Metropix i2025

Guide Price £350,000 - £375,000. Tucked Away in the heart of South Ockendon, this location is everything a growing family needs. Schools, Shops, Doctors, Dentist, Train station, all within walking distance. Calling All First Time Buyers.



Address: 18 Derwent Parade, South Ockendon, RM15 5EE

Phone: 01708 203 232

Email: zoew@myidealmortgage.co.uk