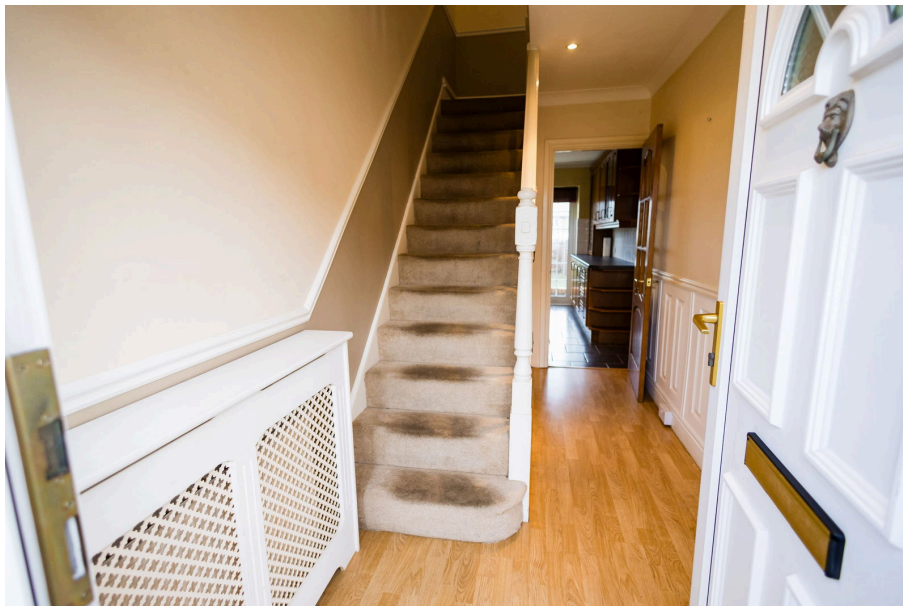




26 Davis Road, Aveley

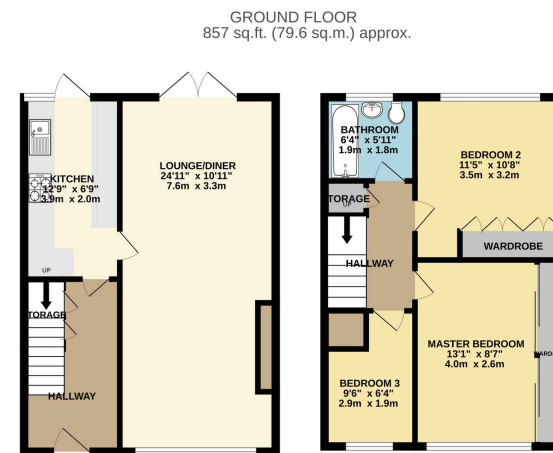
Guide Price £350,000 - £375,000

3 1 2



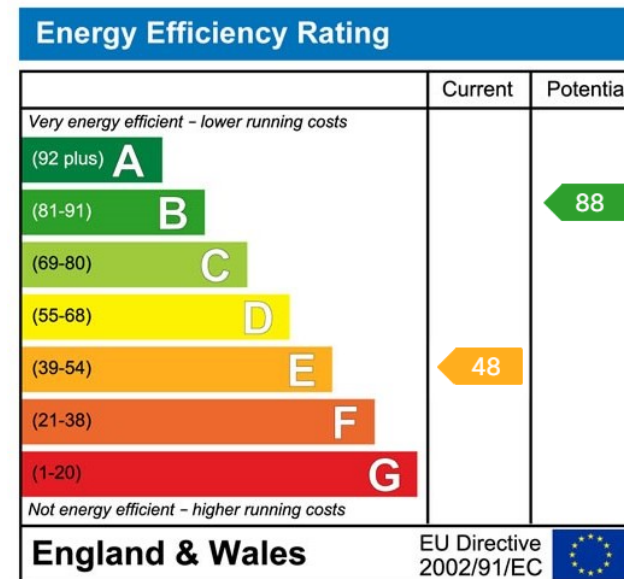
- THREE BEDROOMS
- DRIVEWAY
- THREE PIECE BATHROOM SUITE
- SOUGHT AFTER LOCATION
- NO ONWARD CHAIN
- SEMI DETACHED HOUSE
- LARGE THROUGH LOUNGE/ DINER
- WALKING DISTANCE TO LOCAL HIGH STREET
- WALKING DISTANCE TO PRIMARY AND SECONDARY SCHOOL
- NO THROUGH ROAD





THREE BEDROOM SEMI DETACHED HOUSE
TOTAL FLOOR AREA: 857 sq ft. (79.6 sq.m.) approx.
While every effort has been made to ensure the accuracy of the floorplan, the floorplan is not a guarantee of the actual dimensions of the property. The floorplan is a guide only and should not be used as a basis for any legal proceedings. The floorplan is a guide only and should not be used as a basis for any legal proceedings. The floorplan is a guide only and should not be used as a basis for any legal proceedings.

NO ONWARD CHAIN!! Guide Price £350,000 - £375,000. Do not miss your chance to view this ideal Three Bedroom Semi Detached House, with Garage and Off Street Parking. Large Lounge-Diner, Good Sized Bedrooms. This property has huge potential. Contact Zoe to secure your viewing.



Address: 18 Derwent Parade, South Ockendon, RM15 5EE

Phone: 01708 203 232

Email: zoew@myidealmortgage.co.uk