



Your Logo

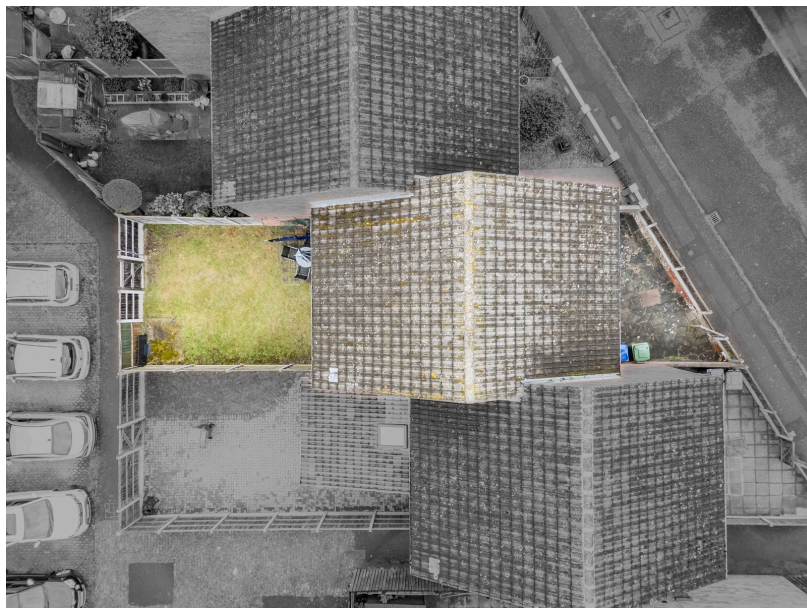
6 Dent Close,
Guide Price £325,000

3 2 2

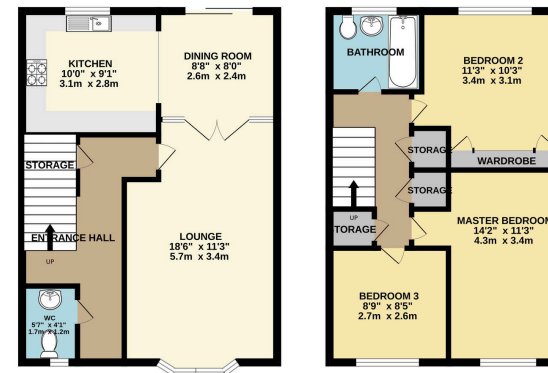


- Three Bedroom Terraced House
- Large Through Lounge
- Stones Throw Away From Local High Street
- UPVC Double Glazed Windows
- Close to Local Park
- Communal Parking to Rear
- Downstairs W/C
- Large Loft Space
- Walking Distance to excellent Primary and Secondary Schools
- Ideal First Time Purchase





GROUND FLOOR
931 sq.ft. (86.5 sq.m.) approx.



THREE BEDROOM TERRACED HOUSE
TOTAL FLOOR AREA: 931 sq.ft. (86.5 sq.m.) approx.
While every effort has been made to ensure the accuracy of the floorplan, the measurements of rooms, walls, doors and any other details are approximate and are intended to give an overall impression of the property. The actual measurements may vary slightly from those shown on the floorplan. The services, systems and appliances shown have not been tested and no guarantee is given for their operation or efficiency. See the agent's brochure for more details.

Ideal First Time Purchase. Guide Price £325,000 - £350,000. Do not miss your chance to view this Three Bedroom Terraced House situated in the heart of South Ockendon. Walking distance to choice of Primary Schools, Secondary School, Local High Street, Superstore, Doctors, Dentist, Gym, C2C Train station, the location cannot be beaten. Call Zoe today to secure your viewing.

Address: 18 Derwent Parade, South Ockendon, RM15 5EE

Phone: 01708 203 232

Email: zow@myidealmortgage.co.uk