



30 Nethan Drive, Aveley

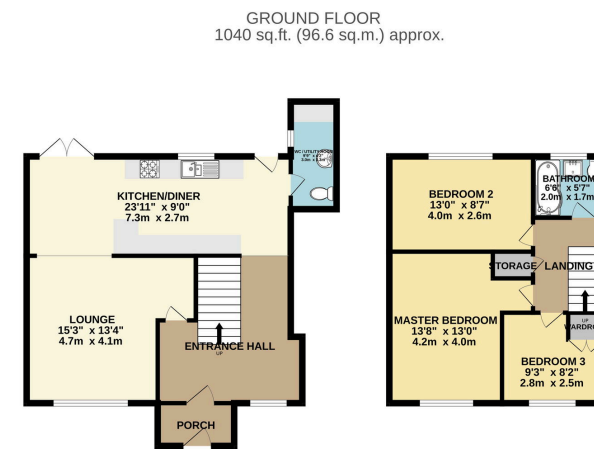
Offers Over £400,000

3 2 2



- Three Good Sized Bedrooms • End of Terraced House
- Kitchen Diner • Off Street Parking
- Generously Sized Rear Garden • Downstairs W/C
- No Onward Chain • Scotswood Construction
- UPVC Double Glazed Windows • Decorated Beautifully Throughout





THREE BEDROOM END OF TERRACED HOUSE

TOTAL FLOOR AREA: 1040 sq ft (96.6 sq m.) approx.

Whilst every attempt has been made to ensure the accuracy of the description contained here, measurements of doors, windows, floors and areas are approximate and no responsibility is taken for any errors, omission or mis-statement. This plan is for illustrative purposes only and should be used as such by any prospective purchaser. The services, systems and appliances shown have not been tested and no guarantee is given as to their operability or efficiency, can be given.

Made With Metrepro C325S

NO ONWARD CHAIN. We are thrilled to bring to market the lovely Nethan Drive, an extended Three Bedroom, End of Terraced House, Family Bathroom and Downstairs W/C, Utility Room, Large South Facing Rear Garden, Off Street Parking, Kitchen/Diner and much much more. Call Zoe today to secure your viewing.



Address: 18 Derwent Parade, South Ockendon, RM15 5EE

Phone: 01708 203 232

Email: zoew@myidealmortgage.co.uk