

Brimfield Road, Purfleet, RM19 1RQ

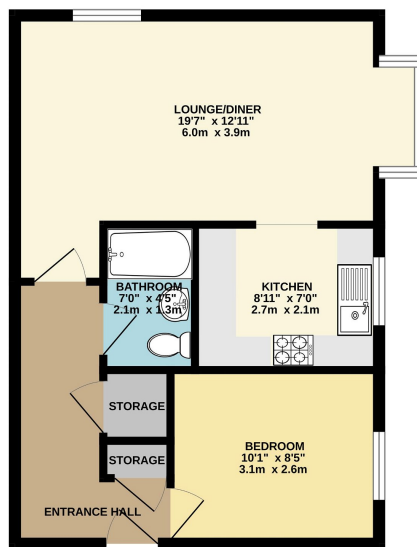
Offers Over £170,000

🛏 1 🚿 1 🚿 1



- STUNNING SHOWHOME CONDITION
- ONE BEDROOM APARTMENT
- TOP FLOOR
- LOFT STORAGE SPACE
- NEWLY FITTED BATHROOM
- 98 YEARS REMAINING ON LEASE
- ALLOCATED PARKING SPACE
- OPEN PLAN LIVING
- IMMACULATE APARTMENT
- SCENIC SURROUNDING AREAS

GROUND FLOOR
 460 sq.ft. (42.7 sq.m.) approx.



ONE BEDROOM TOP FLOOR APARTMENT
 TOTAL FLOOR AREA: 460 sq.ft. (42.7 sq.m.) approx.
While every attempt has been made to ensure the accuracy of the floorplan contained here, measurements of doors, windows, floors and any other items are approximate and no responsibility is taken for any error, omission or mis-statement. This plan is for illustrative purposes only and should be used as a guide for any prospective purchaser. The services, fixtures and appliances shown have not been tested and no guarantee as to their operability or efficiency can be given.
 Made with Metagixi CS224

Showroom Condition! WOW! This remarkable apartment is immaculate, aesthetically impeccable and is ready for new owners. One Bedroom Top Floor Flat, with its very own loft storage space. Every single corner of this property has been cared for with love and amazing attention to detail. You do not want to miss your chance at making this home yours. 98 Years remaining on lease. My Ideal Mortgage Pro

Property Partners are honoured to bring Brimfield Road to the market. Call Zoe on 01708203232 to secure your viewing.