




Trent Bridge View

Nottingham
NG2

Guide Price £240,000

Property Type

 Apartment

Bedrooms

 1

Bathroom


 1

Size

 484 sq m

Tenure

Leasehold

 [Gallery](#)

 [Location](#)

 0115 646 3924

 info@merrittestates.com

M | **MERRITT ESTATES**
LETTINGS & PROPERTY MANAGEMENT

Trent Bridge View, Nottingham, NG2

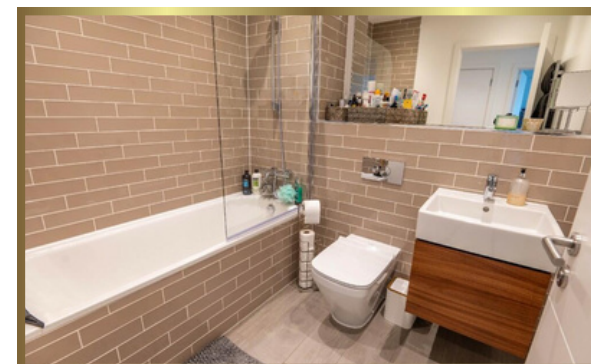
An immaculately presented 1 bedroom apartment with river facing views.

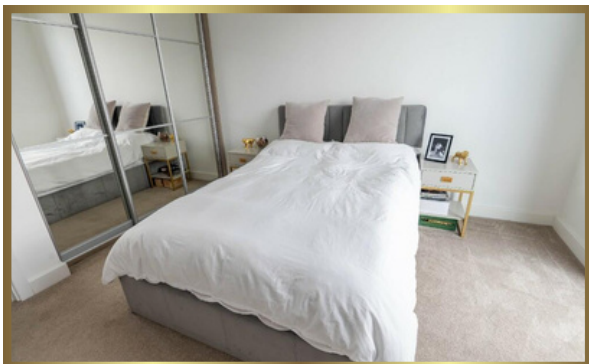
The accommodation briefly comprising of an open plan kitchen living space, with integrated appliances and modern units. A spacious double bedroom with built in wardrobes and floor to ceiling windows showcasing a fantastic view of the river Trent. Family bathroom housing a bath with a shower over, hand basin, storage unit and W/C.

Externally a well sized balcony with space for a table and chairs, with views across the river.

This apartment has fantastic transport links, including a short walk to Nottingham Train station. In addition, it is conveniently located within close proximity to all of the local amenities West Bridgford has to offer.

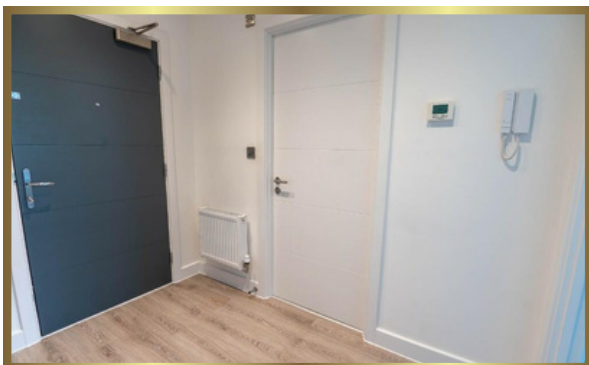
Offered to the market with no upward chain and vacant possession.





- Stunning River Views
- 1 Bedroom Apartment
- Modern Kitchen with fitted appliances
- Open Plan Living
- Balcony with views of the River Trent

- Third floor apartment
- Easy access to West Bridgford and Nottingham City Centre
- EPC B
- Council Tax Band C



Property Type

 Apartment

Bedrooms

 1

Bathroom

 1

Size

 484 sq ft

Tenure

Leasehold



MERRITT ESTATES
LETTINGS & PROPERTY MANAGEMENT

Interested in this property?

Contact Merritt Estates on **0115 646 3924**

Merritt Estates

The Quadrant, Nuart Road, Beeston, Nottingham, NG9 2NH



Energy rating and score

This property's energy rating is B. It has the potential to be B.

[See how to improve this property's energy efficiency.](#)

Score	Energy rating	Current	Potential
92+	A		
81-91	B	84 B	84 B
69-80	C		
55-68	D		
39-54	E		
21-38	F		
1-20	G		

These sales particulars have been prepared by Merritt Estates and produced in good faith on the instruction of the vendor. All measurements should be regarded as approximate.

