

RICE+ROMAN



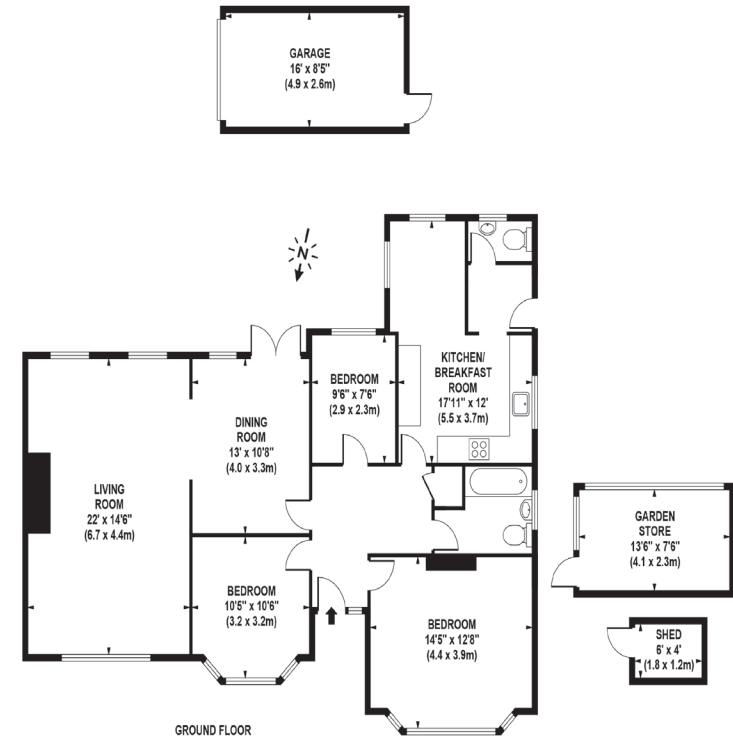
Lower Village Road, Ascot

SL5 9BQ



Living Area

Lower Village Road, Ascot, Berkshire



APPROX. GROSS INTERNAL FLOOR AREA 1204 SQ FT / 112 SQ M (MAIN HOUSE)
 APPROX. GROSS INTERNAL FLOOR AREA 261 SQ FT / 24 SQ M (OUTBUILDINGS)
 APPROX. GROSS INTERNAL FLOOR AREA 1465 SQ FT / 136 SQ M (TOTAL)

- Detached Bungalow
- Three Bedrooms
- Corner Location
- Off Street Parking
- Detached Garage
- Ideal Location for Sunninghill Village

Price: £795,000
Council Tax Band: F
EPC Rating: D
Tenure: Freehold

For more information
 please contact:

Rice & Roman
 T: 01344 981246
 E: info@riceandroman.co.uk
 Lynwood Village, SL50FJ
www.riceandroman.co.uk

RICE + ROMAN

Agents Notices - These property details are set out as a general outline only and do not constitute any part of an Offer or Contract. Any services, equipment, fittings or central heating systems have not been tested and no warranty is given or implied that these are in working order. Buyers are advised to obtain verification from their solicitor or surveyor. Fixtures, fittings and other items are not included unless specifically described. All measurements, distances and areas are approximate and for guidance only. Room measurements are taken to be the nearest 10cm and prospective buyers are advised to check these for any particular purpose, e.g. fitted carpets and furniture. This material is protected by the laws of copyright. The owner of the copyright is Countrywide Estate Agents. This property sheet forms part of our database rights and copyright laws. No unauthorised copying or distribution without permission.