

RICE+ROMAN



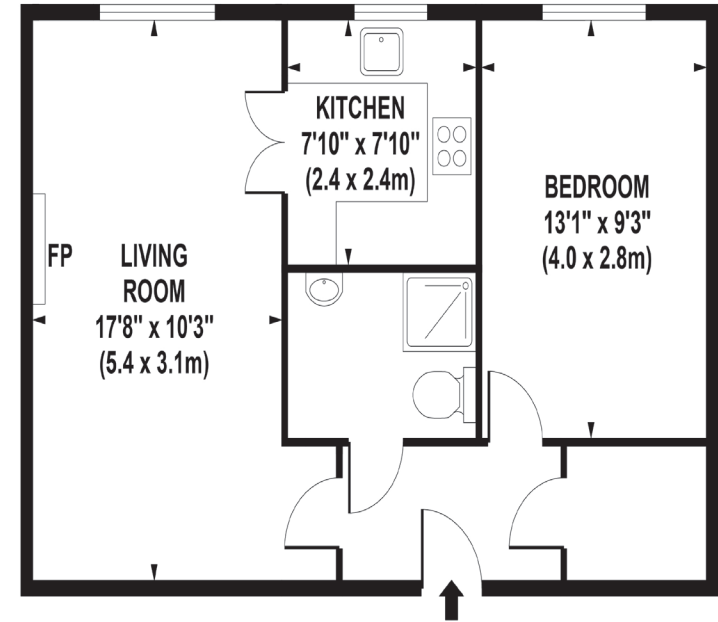
The Meads, Windsor

SL4 3TP



## Living Area

The Meads, Windsor, Berkshire



FIRST FLOOR

**APPROX. GROSS INTERNAL FLOOR AREA 493 SQ FT / 46 SQ M**

Whilst every attempt has been made to ensure the accuracy of the floorplan contained here, measurements of doors, windows and

- For Those Aged 60+
- One Double Bedroom
- 1st Floor Apartment
- Newly Fitted Kitchen and Shower room
- Residents' Lounge and Guest Suite
- Communal Gardens

**Price:** £170,000  
**Service Charge:** £3,039 PA  
**Ground Rent:** £465 PA  
**Other Charges:** N/A  
**Lease Length:** Expiry Date 2116  
**Tenure:** Leasehold

**EPC Rating:** B

For more information  
please contact:

Rice & Roman  
 T: 01344 981246  
 E: info@riceandroman.co.uk  
 Lynwood Village, SL50FJ  
 www.riceandroman.co.uk

**RICE +  
ROMAN**

Agents Notices - These property details are set out as a general outline only and do not constitute any part of an Offer or Contract. Any services, equipment, fittings or central heating systems have not been tested and no warranty is given or implied that these are in working order. Buyers are advised to obtain verification from their solicitor or surveyor. Fixtures, fittings and other items are not included unless specifically described. All measurements, distances and areas are approximate and for guidance only. Room measurements are taken to be the nearest 10cm and prospective buyers are advised to check these for any particular purpose, e.g. fitted carpets and furniture. This material is protected by the laws of copyright. The owner of the copyright is Countrywide Estate Agents. This property sheet forms part of our database rights and copyright laws. No unauthorised copying or distribution without permission.