

RICE+ROMAN



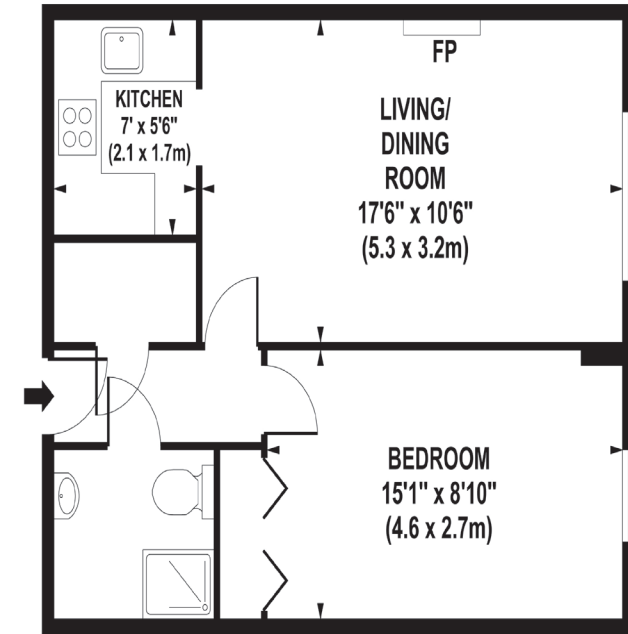
Winterbourne Court, Bracknell

RG12 9FW



Living Area

Winterbourne Court, Tebbit Close Bracknell, Berkshire RG1299



FIRST FLOOR



APPROX. GROSS INTERNAL FLOOR AREA 468 SQ FT / 43 SQ M

Whilst every attempt has been made to ensure the accuracy of the floorplan contained here, measurements of doors, windows and

- Exclusively For Those Aged 60 and over
- One double bedroom
- First Floor Apartment
- Residents' Lounge
- Laundry Room and Guest Suite
- Walking Distance To Town Centre

Price: £99,950
Service Charge: £3,250 PA
Ground Rent: £579 PA
Other Charges: N/A
Lease Length: 2114 (Expiry Date)
Tenure: Leasehold

EPC Rating: C

For more information
please contact:

Rice & Roman
 T: 01344 981246
 E: info@riceandroman.co.uk
 Lynwood Village, SL50FJ
 www.riceandroman.co.uk

**RICE +
ROMAN**

Agents Notices - These property details are set out as a general outline only and do not constitute any part of an Offer or Contract. Any services, equipment, fittings or central heating systems have not been tested and no warranty is given or implied that these are in working order. Buyers are advised to obtain verification from their solicitor or surveyor. Fixtures, fittings and other items are not included unless specifically described. All measurements, distances and areas are approximate and for guidance only. Room measurements are taken to be the nearest 10cm and prospective buyers are advised to check these for any particular purpose, e.g. fitted carpets and furniture. This material is protected by the laws of copyright. The owner of the copyright is Countrywide Estate Agents. This property sheet forms part of our database rights and copyright laws. No unauthorised copying or distribution without permission.