

BLUESTONE
PROPERTIES

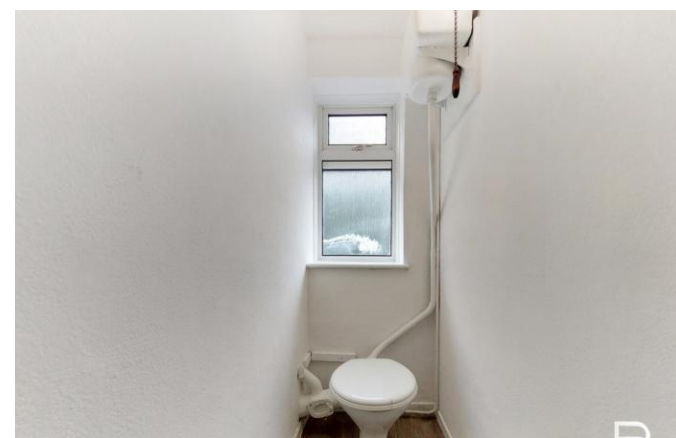


9 Brunswick Court

Anerley Road
London
SE19 2AY

Guide Price **£300,000**
Leasehold

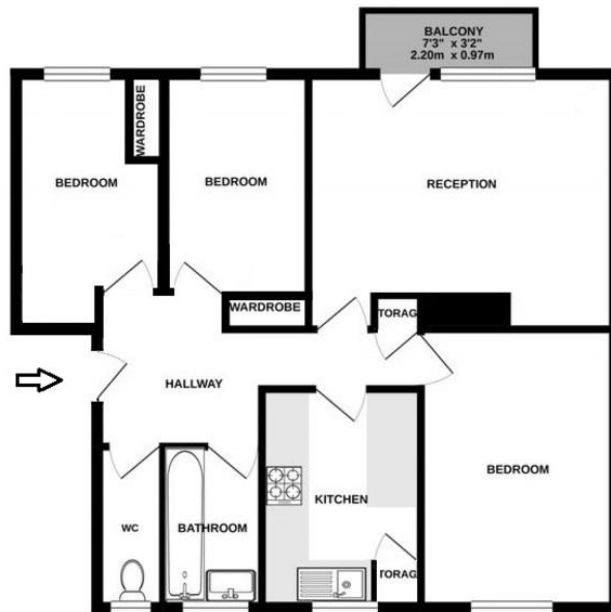
3 bedroom flat
Purpose built property
Bathroom + Separate WC
Private balcony
Ample storage
Development opportunity
Leasehold



**Local Authority
Council Tax Band
EPC Rating**

Bromley London Borough Council
C
TBC

Frist Floor, Brunswick Court, Anerley Road SE19



732 sq.ft. (68.0 sq.m.) approx.

Whilst every attempt has been made to ensure the accuracy of the floorplan contained herein, measurements of doors, windows, rooms and any other items are approximate and no responsibility is taken for any error, omission or mis-statement. This plan is for illustrative purposes only and should be used as such for the prospective purchaser. The correct, complete and appropriate room use has been listed and no guarantee is made regarding its efficiency or suitability.



Bluestone Properties
Tooting Works
89 Bickersteth Road
London
SW17 7BW

Contact
02083553405
philip@bluestoneproperties.co.uk
www.bluestoneproperties.co.uk

Agents Note: Whilst every care has been taken to prepare these particulars, they are for guidance purposes only. All measurements are approximate and are for general guidance purposes only and whilst every care has been taken to ensure their accuracy, they should not be relied upon and potential buyers/tenants are advised to recheck the measurements.

