

Directions

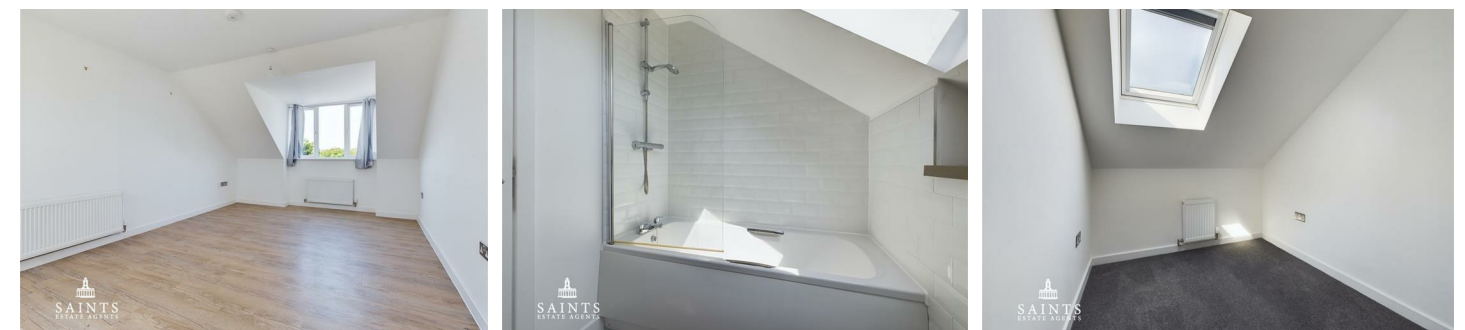
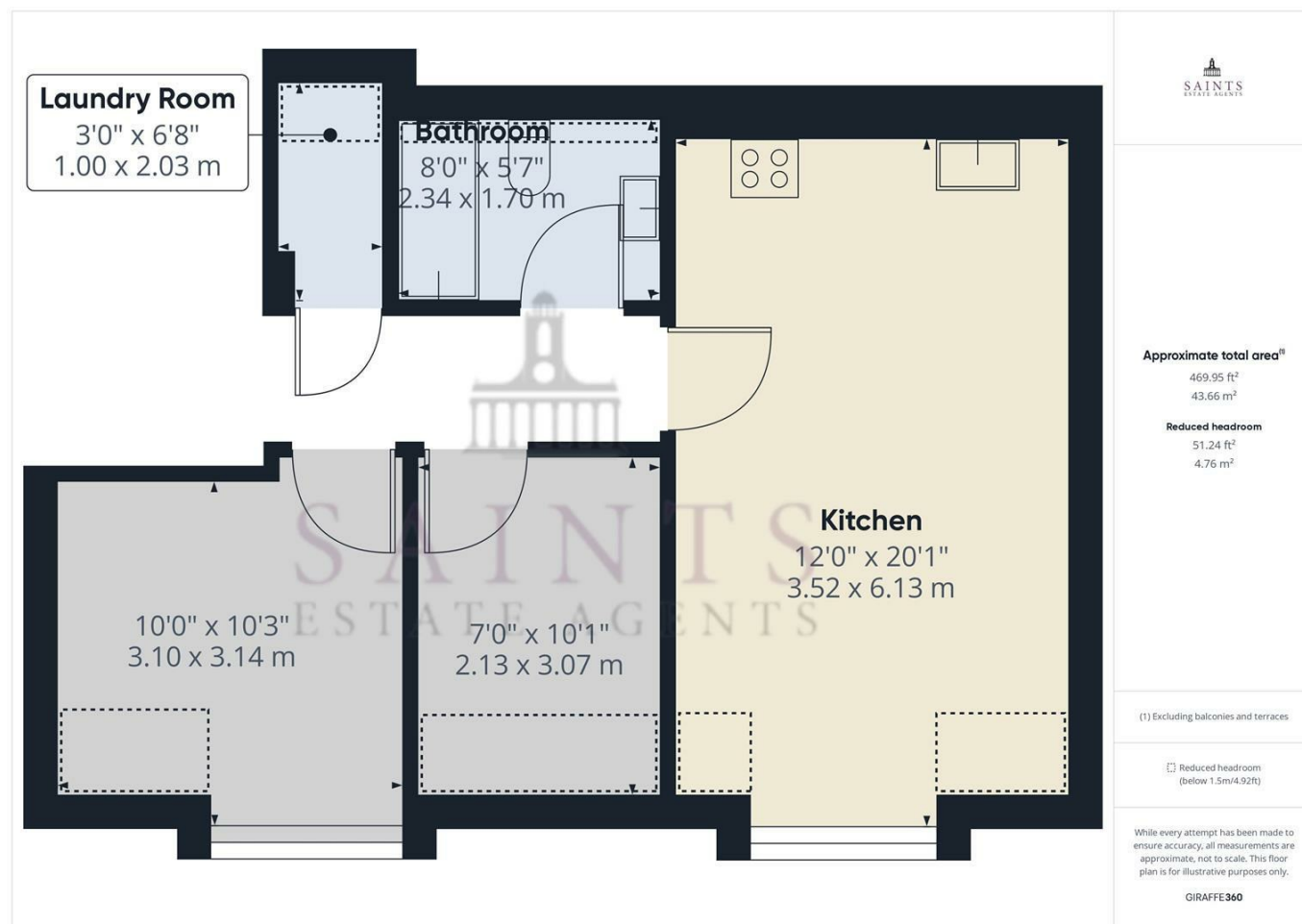
Viewings

Viewings by arrangement only. Call 01604 210693 to make an appointment.

EPC Rating

B

Energy Efficiency Rating		Current	Potential
Very energy efficient - lower running costs			
(92 plus) A			
(81-91) B		84	
(69-80) C			
(55-68) D			
(39-54) E			
(21-38) F			
(1-20) G			
Not energy efficient - higher running costs			
England & Wales		EU Directive 2002/91/EC	



Flat 10, 174 St. Andrews Road, Northampton, NN2 6DA

Offers in the region of £139,995

- TOP FLOOR FLAT
- OPEN PLAN KITCHEN LIVING SPACE
- NEAR TRAIN STATION
- MODERN BATHROOM
- 2 BEDROOMS
- INVESTMENT OPPORTUNITY
- SIMPLISTIC MODERN DESIGN
- NO UPPER CHAIN

Flat 10, 174 St. Andrews Road, Northampton NN2 6DA

This charming two bedroom flat, available in Semilong, Northampton

A top floor flat with a two cosy bedrooms, with a simplistic relaxing décor suitable for a first time buyer. With an open plan kitchen dining living space, you can whip up a delicious meal and entertain guests within this beautiful open space.

Fitted with hard wood flooring this living space is the perfect place to feel at home. A little touch of luxury with a built in fridge and an integrated oven. A beautiful modern bathroom with a heated towel rail and both a bath and shower to add a touch of luxury. The perfect spot to unwind after a long day.

Including a cupboard for storage or even to be utilised as a laundry closet. The possibilities are endless with this lovely flat.

Call today to book a viewing.



Council Tax Band: B

Top Floor Flat

Hard flooring door to rooms, door to combi boiler, plumbing for washing machine and washing machine.

Bedroom 1

Double glazed window to rear radiator.

Bedroom 2

Radiator, double glazed window to rear.

Bathroom

Tiled flooring heated towel rail, handbasin with pedestal, low level WC, bath built in shower, mixer taps, tiled around.

Kitchen dining room

Two double radiators, hard flooring, hardwood over stainless steel sink with drainer and mixer tap, built in oven electric hob, velux window, built in fridge, spotlights.

Hallway

Loft hatch, radiator.

