

85a Montacute Road, Morden, SM4 6RJ



Guide price £245,000

WH WATSON HOMES
Estate Agents

Watson Homes are pleased to offer this one bedroom first floor maisonette with a lovely private garden, situated in a popular residential road in Morden. The garden offers the perfect place to relax and entertain family and friends, with the accommodation consisting of a living/dining room, bedroom, bathroom and kitchen. Benefits include double glazing throughout, gas central heating, and use of loft for storage.

Ideally situated for easy access to Morden town centre and Underground Station, as well as St Helier train stations providing great transport links into Central London. For those looking for local green space to enjoy, Modern Hall Park and Ravensbury Park are close by.

Accommodation

Front door into entrance lobby, stairs to 1st floor hallway, large built in storage cupboard, loft access with pulldown ladder and part boarded for storage.

Living Room

Radiator, double glazed window to rear aspect, wood laminate flooring .

Bedroom

Radiator, double glazed window to front aspect , wood laminate flooring.

Kitchen

Range of fitted kitchen units and drawers, laminate worksurface, inset stainless steel sink with chrome mixer tap, integrated oven and hob with extractor fan above, space for tall, fridge freezer and washing machine, tiled splashback, wood laminate flooring, double glazed window to front and side aspect, wall mounted 'Worcester' boiler.

Bathroom

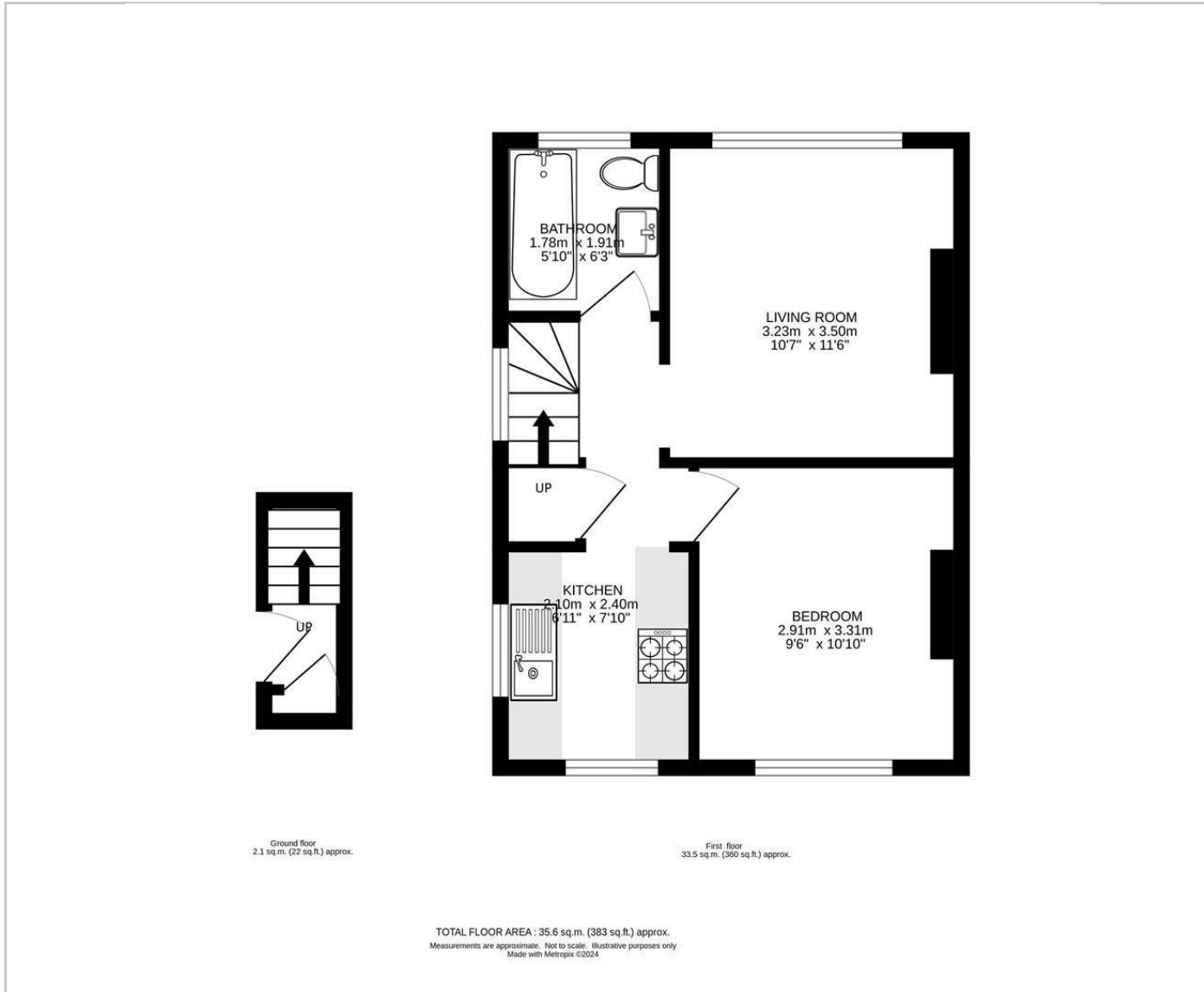
Three piece suite comprising of panel enclosed bath with chrome taps and shower head attachment, WC, pedestal wash handbasin, part tiled walls, laminate flooring, heated towel rail, double glazed window to rear aspect.

Garden

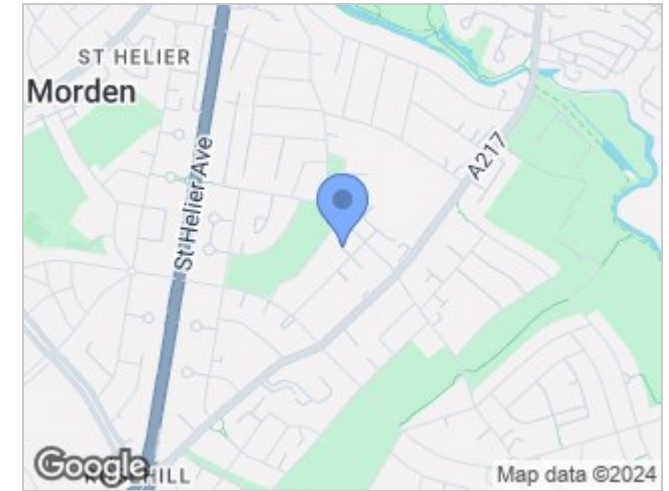
Well maintained garden mainly laid to lawn, borders with flowers, shed.



Floor Plans



Area Map



Energy Performance Graph

