



Flat 7 Villiers Court, 37 Cheam Road, Epsom, KT17 1FD

£350,000

WH WATSON HOMES
Estate Agents

37 Cheam Road, Epsom, KT17 1FD

Nestled on Cheam Road in the charming town of Epsom, this exquisite one-bedroom apartment is a true gem waiting to be discovered. Situated in a purpose-built complex, this new build property boasts modernity and style.

As you step inside, you are greeted by a spacious open-plan lounge and dining area, flooded with natural light that seamlessly flows into a well-equipped, contemporary kitchen. The layout is perfect for entertaining guests or simply relaxing in style.

The bedroom is a tranquil retreat, offering a peaceful sanctuary after a long day. The luxurious bathroom adds a touch of elegance to this already impressive property.

One of the highlights of this apartment is the large balcony, where you can enjoy your morning coffee or unwind in the evening while taking in the views of the surrounding area.

Parking is a breeze with your own allocated space, ensuring convenience and peace of mind. With a long lease in place, this property offers not just a home, but a lifestyle of comfort and sophistication.

Don't miss the opportunity to make this stunning apartment your own and experience the best of modern living in the heart of Epsom.

Accommodation

Door entry system to...

Communal entrance hall

Stairs and lift to 1st floor, front door to...

Entrance hall

Wood effect flooring, double storage cupboard housing fuse board and underfloor heating, doors to main living area, bedroom, cloakroom.

Double doors to main living area

Kitchen area

Stone work surfaces with upstand and modern drawers and cupboards below, matching wall units with under lighting, and tall larder units, stainless steel one and a half bowl under sink with modern chrome mixer tap, built-in double oven, electric hob with stainless steel extractor/cooker hood above, integrated washing machine and dishwasher, integrated fridge freezer, Metro tile style splashback, feature floating shelf with wall mounted mirror.

Lounge/dining area

Double glazed bifold doors to large balcony, wood effect flooring, bifold doors to balcony, bespoke built-in TV stand/unit with storage below.

Bedroom

Built-in mirror wardrobes with sliding doors, further built-in airing cupboard housing boiler, UPVC double glazed window and door to balcony, TV point, door to...

Ensuite bathroom.

Modern white suite comprising tiling close bath with chrome wall mounted tap plate and chrome shower attachment, Wash hand basin with modern chrome mixer tap and drawer below, low-level WC with concealed system and push button flush, tiled walls with recess and built-in mirrored cabinet, wall mounted chrome radiator/towel rail.

Balcony

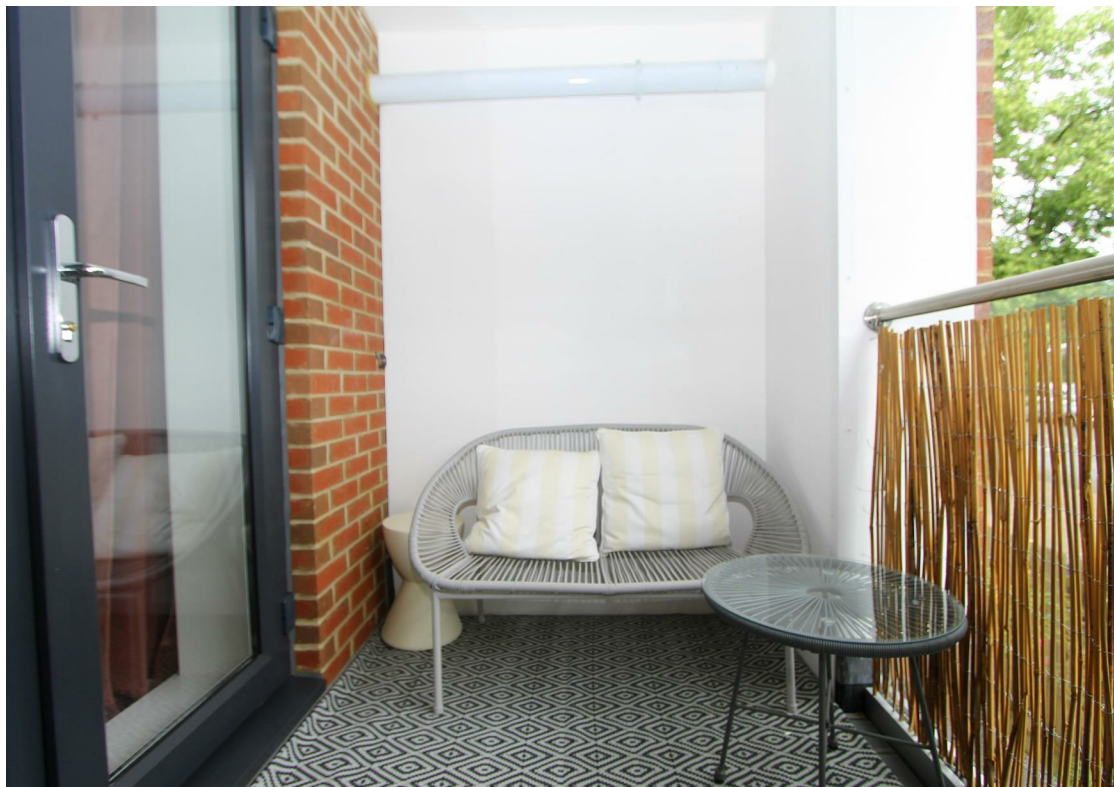
Large private balcony with access from the lounge and bedroom.

Outside

Allocated parking and visitors parking.









Floor Plan



Viewing

Please contact our Watson Homes Cheam Village Office on 020 3196 1686 if you wish to arrange a viewing appointment for this property or require further information.

These particulars, whilst believed to be accurate are set out as a general outline only for guidance and do not constitute any part of an offer or contract. Intending purchasers should not rely on them as statements of representation of fact, but must satisfy themselves by inspection or otherwise as to their accuracy. No person in this firm's employment has the authority to make or give any representation or warranty in respect of the property.

Area Map



Energy Efficiency Graph

