

11-12 GRENVILLE STREET

BLOOMSBURY, WC1N 1LZ

FOREST
REAL ESTATE

COLONNADE

13

FOR SALE

355 SQ FT

A Newly Refurbished Self Contained Office In The Heart Of Bloomsbury

Key Features

- Self contained
- New 999 Year Leasehold
- Set Over Two Floors
- No VAT
- Adjacent To Brunswick Square Gardens
- Natural light
- WC
- Wood Effect Flooring
- Use Class E
- 0.1 miles From Russel Square Station

11-12 Grenville Street
Bloomsbury, WC1N 1LZ



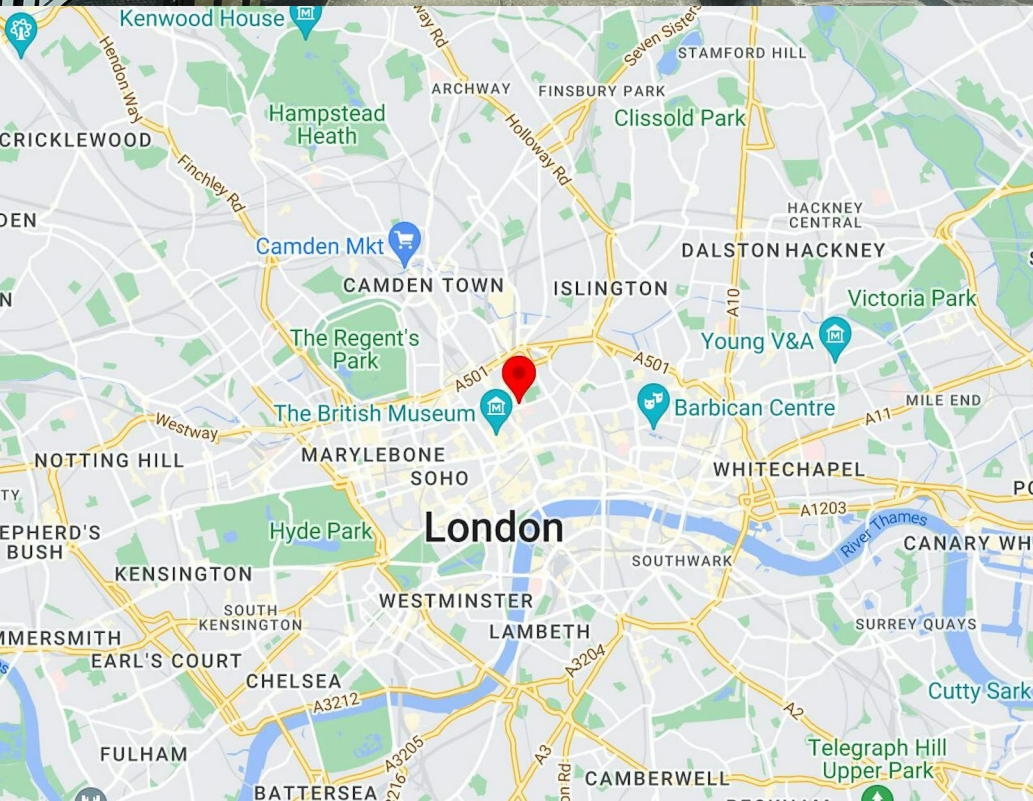


Description

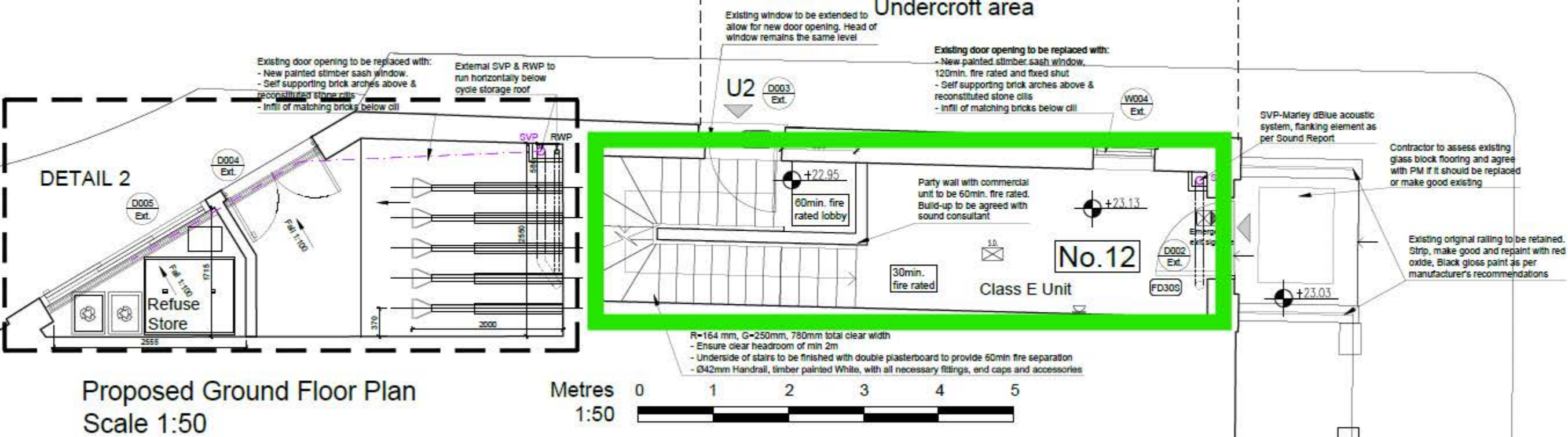
This self-contained office unit on Grenville Street is available for sale. The property features its own private entrance, offering convenience and exclusivity. Recently refurbished, the office is modern and well-presented.

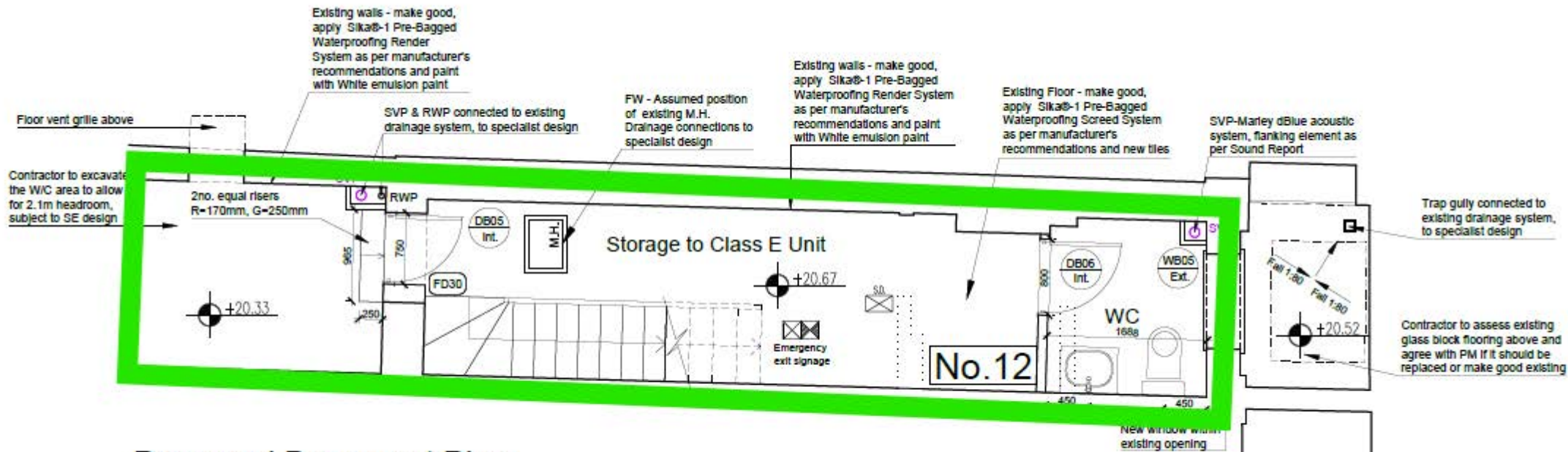
Location

Grenville Street is a great spot for networking with its close proximity to various businesses, shops, and restaurants. It's also near some of London's iconic landmarks, which adds a touch of prestige. You're just a short walk away from Tesco Express, Franco Manca, Wasabi, Pret a Manger, and many other popular spots.









Proposed Basement Plan
Scale 1:50

Availability

Price £175,000

Rates Applicants to make their own enquiries to the London Borough of Camden

Service Charge £300 per annum

VAT Not applicable

EPC On application

Contact

Zach Forest

020 3370 4470 | 07890 209 397

zach@forestrealestate.co.uk

Casey Okin

020 3370 4470 | 07391 453 076

casey@forestrealestate.co.uk

North West London Office

1 Bridge Lane, London, NW11 0EA

020 3355 1555

Watford Office

1a Local Board Road, Watford, WD17 2JP

01923 911 007

East London Office

18a Victoria Park Square, London, E2 9PB

020 3370 4470

www.forestrealestate.co.uk

info@forestrealestate.co.uk

11-12 Grenville Street
Bloomsbury, WC1N 1LZ

F O R E S T
REAL ESTATE