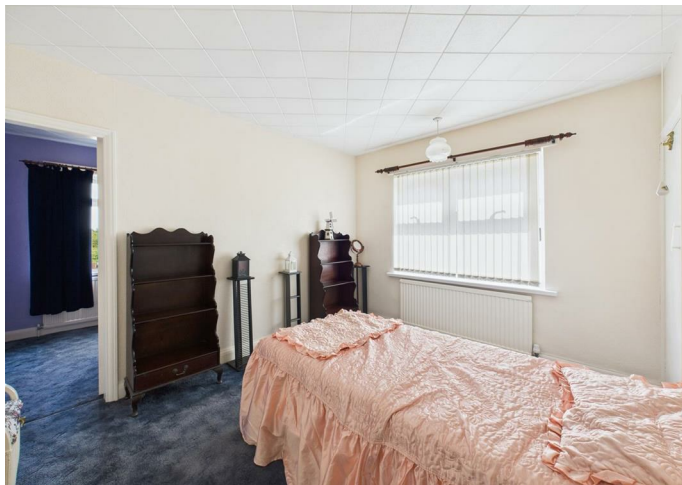


FREEHOLD



House - Semi-Detached

**1229 LINCOLN  
ROAD,  
PETERBOROUGH,  
PE4 6LF**

Asking price

**£220,000**

FEATURES



**Bellavie**  
HOMES  
ESTATE AGENTS

# 3 Bedroom House - Semi-Detached located in Peterborough

NO CHAIN! Nestled on the desirable Lincoln Road Werrington in Peterborough, this charming house presents an excellent opportunity for both families and professionals seeking a comfortable and convenient living space. The property boasts two spacious reception rooms, perfect for entertaining guests or enjoying quiet evenings with loved ones.

With two to three well-proportioned bedrooms, there is ample room for relaxation and personalisation, catering to a variety of living arrangements. The flexibility of the additional bedroom allows for a home office, guest room, or children's playroom, adapting to your lifestyle needs.

The house is complemented by a garage, providing secure storage for your vehicle or additional belongings, while off-road parking ensures convenience for you and your visitors.

Situated in a vibrant area, this property is well-connected to local amenities, schools, and transport links, making it an ideal choice for those who value both comfort and accessibility. This delightful home is ready to welcome its new owners, offering a blend of practicality and charm in a sought-after location. Don't miss the chance to make this house your home.

Call us on  
**01733 306 306**  
[hello@bellaviehomes.co.uk](mailto:hello@bellaviehomes.co.uk)  
[www.bellaviehomes.co.uk](http://www.bellaviehomes.co.uk)

Council Tax Band  
**C**



Energy Efficiency Rating		
	Current	Potential
Very energy efficient - lower running costs		
(92 plus) <b>A</b>		
(81-91) <b>B</b>		
(69-80) <b>C</b>		
(55-68) <b>D</b>		
(39-54) <b>E</b>		
(21-38) <b>F</b>		
(1-20) <b>G</b>		
Not energy efficient - higher running costs		
<b>England &amp; Wales</b>	EU Directive 2002/91/EC	

Agents Note: Whilst every care has been taken to prepare these particulars, they are for guidance purposes only. All measurements are approximate and are for general guidance purposes only and whilst every care has been taken to ensure their accuracy, they should not be relied upon and potential buyers are advised to recheck the measurements.

