



FREEHOLD

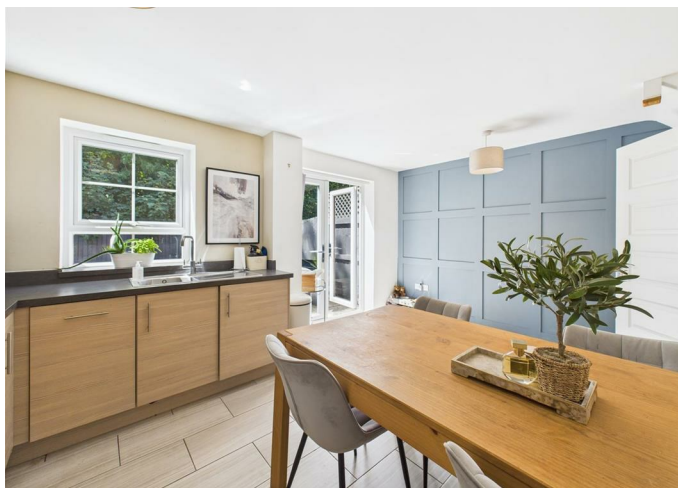
House - Semi-Detached

**23 VANCOUVER
WAY,
PETERBOROUGH,
PE2 9FH**

Asking price

£270,000

FEATURES



Bellavie
HOMES
ESTATE AGENTS

3 Bedroom House - Semi-Detached located in Peterborough

Nestled in the sought-after area of Hempsted, Peterborough, this modern three-bedroom house presents an excellent opportunity for families and professionals alike. The property boasts a contemporary design, ensuring a comfortable and stylish living environment.

As you enter, you will be greeted by a spacious layout that maximises natural light, creating a warm and inviting atmosphere throughout. The well-appointed kitchen is perfect for culinary enthusiasts, while the adjoining living area provides an ideal space for relaxation and entertaining guests.

The three bedrooms are generously sized, offering ample space for rest and personalisation. Each room is designed to provide a peaceful retreat, making it easy to unwind after a long day.

Outside, the property features a convenient driveway, providing off-street parking and easy access. The surrounding area is known for its community spirit and accessibility to local amenities, including shops, schools, and parks, making it an ideal location for families.

This modern house on Vancouver Way is not just a home; it is a lifestyle choice in a popular neighbourhood. With its appealing features and prime location, it is sure to attract interest from a variety of potential buyers or renters. Do not miss the chance to make this delightful property your own.

Call us on
01733 306 306
hello@bellaviehomes.co.uk
www.bellaviehomes.co.uk

Council Tax Band
B



Energy Efficiency Rating		
	Current	Potential
Very energy efficient - lower running costs		
(92 plus) A		
(81-91) B		
(69-80) C		
(55-68) D		
(39-54) E		
(21-38) F		
(1-20) G		
Not energy efficient - higher running costs		
England & Wales	EU Directive 2002/91/EC	

Agents Note: Whilst every care has been taken to prepare these particulars, they are for guidance purposes only. All measurements are approximate and are for general guidance purposes only and whilst every care has been taken to ensure their accuracy, they should not be relied upon and potential buyers are advised to recheck the measurements.

